

# Peavey®





# PRODUCT CATALOG

<b>GUITAR AMPLIFIERS &amp; CABS</b>	<b>5</b> 6505° SERIES	<b>ACOUSTIC GUITARS</b>	<b>51</b> COMPOSER™ SERIES	<b>PORTABLE P.A.</b>	<b>103</b> TRIFLEX° SYSTEM
	<b>10</b> INVECTIVE™ SERIES		<b>52</b> DW™ ACOUSTICS		<b>104</b> ESCORT° SYSTEM
	<b>12</b> CLASSIC° SERIES				<b>108</b> P2™ SYSTEM
	<b>14</b> PEAVEY EXTENSION CABS	<b>BASSES</b>	<b>55</b> CIRRUS° SERIES	<b>POWER AMPS</b>	<b>110</b> IPR2™ AMPS
	<b>15</b> VALVEKING° SERIES		<b>58</b> MILLENNIUM° SERIES	<b>AUDIO PROCESSING</b>	<b>114</b> EQUALIZERS
	<b>16</b> VYPYR° SERIES		<b>62</b> GRIND™ SERIES		<b>115</b> CROSSOVERS
	<b>22</b> ECOUSTIC° SERIES		<b>64</b> MILESTONE° SERIES	<b>MICROPHONES</b>	<b>120</b> STUDIO PRO° SERIES
	<b>24</b> STEEL AMPS	<b>MIXERS</b>	<b>66</b> PV° SERIES		<b>122</b> SPECIALTY MICROPHONES
	<b>25</b> ROBERT RANDOLPH AMP & CAB		<b>70</b> FX™ 2		<b>123</b> WIRELESS MICROPHONES
	<b>26</b> TRANSTUBE° SERIES		<b>72</b> XR° SERIES		<b>125</b> PV-1° SERIES
<b>KEYBOARD AMPLIFIERS</b>	<b>28</b> KB° SERIES			<b>SOFTWARE &amp; INTERFACES</b>	<b>126</b> REVALVER° 4
<b>BASS AMPLIFIERS &amp; CABS</b>	<b>31</b> MINIMEGA°	<b>POWERED ENCLOSURES</b>	<b>76</b> RBN° SERIES		
	<b>32</b> MINIMAX™		<b>80</b> PVX™ SERIES		
	<b>33</b> MAX° SERIES		<b>82</b> DARK MATTER™ SERIES		
	<b>34</b> BASS ENCLOSURES		<b>84</b> PV° SERIES		
	<b>35</b> HEADLINER BASS HEADS		<b>86</b> VERSARRAY™ SERIES		
	<b>36</b> MICHAEL ANTHONY VB™-MA		<b>90</b> ELEMENTS™ C/M SERIES		
<b>GUITARS</b>	<b>38</b> JF-1™ EXP		<b>94</b> QW° SERIES		
	<b>40</b> SC° SERIES		<b>96</b> SP° SERIES		
	<b>42</b> RAPTOR° CUSTOM		<b>98</b> PVX™ SERIES		
	<b>44</b> RAPTOR° PLUS		<b>99</b> PR° SERIES		
	<b>46</b> POWERSLIDE°		<b>100</b> IMPULSE° SERIES		

This Product Catalog is a publication of Peavey Electronics Corporation. Specifications and features subject to change without notice.

Some of the products featured in this publication may not be available at certain Peavey dealers. The contents of this publication are ©2016 by Peavey and may not be reproduced in any manner without prior written permission of Peavey.

All rights reserved. Printed in the U.S.A.

FLOYD ROSE® is a registered trademark of Floyd Rose Marketing, Inc.

HIPSHOT™ is a trademark of Hipshot Music Products

NEUTRIK® is a registered trademark of Neutrik AG.

GROVER® is a registered trademark of Grover Musical Products, Inc.

ACCUTRONICS® is a registered trademark of Sound Enhancements, Inc.

GRAPH TECH™ is a trademark of Graph Tech Guitar Labs

SWITCHCRAFT™ is a registered trademark of Switchcraft, Inc.

SCHALLER® is a registered trademark of Schaller Electronic.

iPhone®, iPod®, iPod touch®, iPad®, OS X® & Mac® are registered trademarks of Apple Inc.

Core Audio is a trademark of Apple Inc.

MaxxBass® is a registered trademark of Waves Audio Ltd.

Antares® and Auto-Tune® are registered trademarks of Antares Audio Technologies

Solid-Tune™ is a trademark of Antares Audio Technologies

Kevlar® is a registered trademark of DuPont

EASE is a trademark of AFMG Technologies GmbH

Windows® and Vista® are registered trademarks of Microsoft Corporation

ASIO is a trademark of Steinberg Media Technologies GmbH

5150® is a registered trademark of E.L.V.H. Inc. All rights reserved.

All other trademarks are the property of their respective owners.



Hartley Peavey, CEO and Founder  
Peavey Electronics Corporation



## NOW IN OUR 52ND YEAR UNDER THE SAME OWNERSHIP AND MANAGEMENT!

What makes Peavey different is a commitment to approaching business with a unique vision; from product design to distribution, to being the largest independently owned manufacturer in the business. This quest has led to more than 180 patents and innovations in the way we hear and play music.

# GUITAR AMPLIFIERS & CABS





# 6505<sup>®</sup> Series

The Uncontested Sound  
of Metal



## METAL NEVER DIES.

Whenever it seems that the genre has been taken to the limit, a new generation comes along and redefines "heavy." The sound of today's metal sets a new standard for brutality and aggression. To realize this sound, the bands that have led the modern metal movement for the last 20 years have turned to the only amplifier up to the task – the Peavey 6505<sup>®</sup> Series.

## LEGENDARY TONE – LEGENDARY POWER

Primed by six 12AX7 preamp tubes and driven by four 6L6GC power tubes, the 6505<sup>+</sup> delivers the tone and high gain power that modern players demand. On top of that, you can create a second "lead" tone by engaging the Crunch option on the rhythm channel. In the master section you will find the Peavey exclusive Resonance and Presence controls. Resonance acts as a low-frequency enhancement by decreasing low-frequency damping, while Presence acts as a high-frequency boost, both allowing you to sculpt your tone. All of this tonal power is housed in an exterior that is built for the rigors of the road.

### 6505<sup>+</sup> PLUS HEAD

120 watts RMS into 16, 8 or 4 ohm; Six 12AX7 preamp and four 6L6GC power amp tubes; Footswitchable Lead/Rhythm channel select; 3-band EQ on each channel; Resonance and Presence controls on each channel; Pre Gain and Post Gain on each channel; Footswitchable Crunch boost on Rhythm channel; Bright switch on Rhythm channel; Preamp output; Effects loop; Bias test point for power tubes; Footswitch included.

Dimensions (HxWxD): 13.25" x 28.75" x 14" / 336.6mm x 730.3mm x 355.6mm Weight: 48.3lbs / 22kg 00575680

### 6534<sup>+</sup> PLUS HEAD

120 watts RMS into 16, 8, or 4 ohms (switchable); Six 12AX7 preamp tubes and four EL34 power amp tubes; Footswitchable Lead/Rhythm channel select; 3-band EQ on each channel; Resonance and Presence controls on each channel; Pre Gain and Post Gain on each channel; Footswitchable Crunch boost on Rhythm channel; Bright switch on Rhythm channel; Preamp output; Effects loop; Bias test point for output tubes; Footswitch included.

Dimensions (HxWxD): 13.25" x 28.75" x 14" / 336.6mm x 730.3mm x 355.6mm Weight: 48.3lbs / 22kg 03601030

### 6505<sup>+</sup> PLUS 112 COMBO

60 watts RMS; Footswitchable lead/rhythm channel select; Effects loop; Separate 3-band EQ on each channel; Separate Resonance and Presence controls for each channel; Two 6L6GC power amp tubes; Lead channel: Pre-/Post-Gain controls; Genuine three-spring reverb; One 12" Sheffield<sup>®</sup> speaker; Five 12AX7 preamp tubes; External speaker outputs; 16, 8, or 4 ohms (switchable); Rhythm channel: Pre-/Post-Gain, footswitchable Crunch boost; Integrated MSDI<sup>™</sup> microphone-simulated XLR direct interface.

Dimensions (HxWxD): 30" x 26" x 16" / 762mm x 660.4mm x 406.4mm Weight: 61.29lbs / 27.8kg 03588440

### 6505<sup>+</sup> 412 SLANT

Four Celestion Vintage 30 Speakers; 16 ohms; Two 1/4" inputs; 240 watts RMS closed-back cabinet; Stereo or Mono operation; Recessed handles; Heavy-duty pop out casters; 18-ply Baltic Birch construction.

Dimensions (HxWxD): 32" x 30.125" x 14.25"

812.8mm x 765.175mm x 361.95mm;

Weight: 96.2lbs / 43.65kg 00575700

### 6505<sup>+</sup> 412 STRAIGHT

16 ohms; Four Celestion Vintage 30 Speakers; Two 1/4 inch inputs; Stereo or Mono operation; 240 watts RMS closed-back cabinet; 18-ply Baltic Birch plywood construction; Recessed handles; Heavy-duty pop out casters.

Dimensions (HxWxD):

32" x 30.125" x 14.25"

812.8mm x 765.175mm x 361.95mm

Weight: 98.7lbs / 44.8kg 00575710

### 6505<sup>+</sup> POWERED 118 SUB

Designed to complement the 6505<sup>+</sup> family of enclosures, this ported subwoofer utilizes an 18" heavy duty woofer with a 3" voice coil and 65oz. magnet. The 6505 Guitar Subwoofer will extend the range of your 412 cabinet to better handle the extended lows of 7 and 8 string guitars, and will also make your 6505MH along with the 112-6 or 212-6 thump like a full stack! A built-in 120Hz crossover and bass contour circuit make this 300-watt max sub a versatile addition to any sound system; Will accept line-level or powered input.

Dimensions (HxWxD): 22" x 30" x 19" / 558.8mm x 762mm x 482.6mm

Weight: 76lbs / 34.5kg 03616060







## 6505® MH 20W TUBE GUITAR AMPLIFIER

REAL TUBE TONE. REAL TUBE POWER. NO SIMULATIONS, EMULATIONS OR APPROXIMATIONS.

Featuring an all tube preamp and power amp, the 6505® MH authentically produces the much loved tones of the legendary Peavey 6505 in a small, portable package.

The 6505® MH has two channels that follow the same gain structure and voicing of its big brother! The channels share EQ, lush reverb and an effects loop. Channels, crunch, effects loop and reverb are all footswitchable.

T.S.I.™ tube monitoring constantly lets you know that your power tubes are in good shape, and if not, which ones need to be replaced.

The back panel of the 6505 MH is full of modern technology, including Peavey's exclusive MSDI output, USB recording output, headphone output, speaker defeat switch, and built-in power attenuator!

**Features:** 2x EL84 power tubes and 3x 12AX7/ECC83 preamp tubes; Two footswitchable channels with 3-band EQ; Footswitchable crunch on Rhythm channel; Footswitchable reverb; Footswitchable buffered effects loop; Tube Status indication (T.S.I.™) circuit; Impedance switch for 16 or 8 ohm cabinets; MSDI™ Output with XLR and ground lift switch; USB output; Speaker defeat switch; Headphone output; Attenuator switch for 20 watts, 5 watts, or 1 watt output power.

**Dimensions (HxWxD):** 7.25" x 14" x 7.75" / 185mm x 356mm x 197mm

**Weight:** 17lbs / 8kg

03614180









# 6505® PIRANHA™ HEAD

HARNESS THE ICONIC TONE OF THE ORIGINAL PEAVEY 6505 IN A SMALL AND CONVENIENT PACKAGE CAPABLE OF A MIGHTY 20 WATTS (4 OHMS).



## INPUT CRUNCH/LEAD

Typical of the "crunch" setting on the original 6505 rhythm channel with the bright boost included and LEAD is typical of the classic 6505 high-gain lead sound.

## GAIN

This controls the input level of the amplifier, as it feeds the first JFET gain stage. Clockwise adjustment of this control will result in a hotter and more "responsive" signal to the amplifier input circuit.

## EQ

This control "morphs" from a 6505 "notched" 3-band EQ setting (10-0-7) in the NOTCH position, to the more common "7-7-7" setting at about halfway, and up to full on midrange (10-10-10) at its full clockwise position.

## VOLUME AUX IN

This 1/8" stereo input is provided to insert a full-range audio source into the signal chain, such as a portable MP3 player or other media device.

## PHONES

This stereo 1/4" jack is provided to drive most common studio headphones.

## 12AX7 TUBE

An extremely responsive, innovative new high gain configuration centered around a single 12AX7 is key in getting the soul of the Peavey 6505 into such a small and lightweight package. A departure from typical tube gain circuits, this innovative new design combines basic tone shaping (achieved through repeatable, precise solid state circuitry) with two unique tube stages to attain the legendary distortion of the full-size 6505 head. Unlike other "tube" micro amps which rely primarily on solid state components while the tube is relegated to act as a pass-thru decorative element, the 6505 Piranha is designed to utilize the tube to provide the bulk of the distortion character.

- Use the effects send to drive a much larger power amp....
- Reamping setups are super easy....
- Pair with the all new 6505® Piranha™ 1x8 Cabinet...
- Indestructible build....
- Carrying bag & power supply included....

**Dimensions (HxWxD): 3.2" x 7" x 5.2" Weight: 2.5lbs**



## SPEAKER

This 1/4" mono jack is provided for connection of an external speaker cabinet. Minimum load impedance is 4 Ohms.

## EFFECTS LOOP SEND AND EFFECTS LOOP RETURN

1/4" output jack for supplying signals to external effects or signal processing equipment and 1/4" input for returning signals from external effects or signal processing equipment.

## DC SUPPLY POWER

This switch applies or removes DC power to the internal circuitry.

**6505® PIRANHA™ CABINET**  
03616320

MISHA MANSOOR / LEAD GUITARIST  
PERIPHERY / BULB



invective™ .120 Head 03615860

## invective™ .120 HEAD

Guitarists with heavier tastes looking for their next upgrade will find a sturdy solution in the new Peavey® invective™ .120 Head and invective™ 212 Cabinet. This dynamic duo are perfectly suited for each other, helping players achieve the most revered metal sounds, from woody and clean to the most extreme of high gain tones.

A tube amp only sounds as good as what's inside, and Peavey's invective™ .120 delivers quality with four matched JJ 6L6GC output tubes with top-loaded bias test points and adjustment. On the rear panel, players will find paralleled speaker outputs with impedance selector, an MSDI direct output with Level/Tone/Ground Lift, MIDI out/thru, and MIDI footswitch input. The included footswitch has nine presets to further help the player achieve their desired tone. A remote switchable rack loop and effects loop, half-power switch, and two 9VDC at 500mA auxiliary power jacks complete the back panel.

On the front panel, players will find even more options and advanced control. The invective™ .120 Head has a single input with four key channels: Clean channel with boost drive and tone; (very) Clean channel with gain/low/mid/high/post; Lead/Crunch channel input with muting gate threshold; and Lead/Crunch channel with boost level and tone. All channels, as well as the channel select with bullet LEDs, are remote switchable. Both the Lead and Crunch channels have independent pre- and post-gain controls as well as shared low/mid/high EQ. The standby and power switches with blue jeweled pilot light indicate when the amp is ready. Just adjust the Master Resonance, Presence and Volume knobs, and it's ready to rock.





invective™ 212 Cab 03616670

## invective™ 212 CABINET

The Peavey invective™ 212 Cabinet is perfectly suited for use with the invective™ .120 Head. The solid pine construction provides the most responsive dynamics imaginable and compliments the metal-standard Celestion Vintage 30 (8 ohms) speaker paired with the Creamback G12H-75 (8 ohms) speaker. It's a sonic quality so worthy that many guitarists who have already tried the invective™ 212 describe it as "the best cabinet I've ever heard." Plug right in using the ¼" inputs with Stereo/Mono switch. In Stereo, players will get a left/right configuration rated at 8 ohms per side at over 60 W (RMS) per side. In Mono mode, the invective™ 212 becomes a 16-ohm cabinet capable of handling 120 W (RMS) of thunderous power. The cabinet's fingerjointed construction and premium components throughout ensure extreme road worthiness and reliability, enabling the player to blast off with confidence.

### invective™ .120 Features:

#### Front Panel:

- Single input.
- Clean channel Boost Drive & Tone (remote switchable).
- Clean channel Gain/Low/Mid/High/Post - VERY CLEAN.
- Channel select with "bullet" LEDs (remote switchable).
- Lead/Crunch channel input muting Gate Threshold (remote switchable).
- Lead/Crunch channel Boost Level & Tone (remote switchable).
- Independent Pre and Post Gain controls on Lead and Crunch channels.
- Shared Low/Mid/High EQ on Lead/Crunch channels.
- Master Resonance.
- Master Presence.
- Master Volume.
- Blue Jeweled Pilot Light.
- Power and Standby switches.

#### Rear Panel:

- MIDI / Footswitch Input.
- MIDI Out/Thru.
- 2 x 9VDC @ 500mA Auxiliary power jacks.
- Rack Loop (remote switchable).
- Effects Loop (remote switchable).
- MSDI Direct Output with Level/Tone/Ground Lift.
- Paralleled speaker outputs with Impedance Selector.
- Half Power switch.
- 4 Matched JJ6L6GC output tubes.
- Top-loaded bias test points and adjustment.
- Made in USA.

#### Footswitch (included):

- Preset Mode.
- Rack Loop / Preset 1.
- Effects Loop / Preset 2.

- Gate / Preset 3.
- MIDI CC4 / Preset 4.
- Channel Input Boosts / Preset 5.
- Clean / Preset 6.
- Crunch / Preset 7.
- Lead / Preset 8.
- Master Boost / Preset 9.

### invective™ 212 Features:

- Solid Pine finger jointed construction.
- 1 x 12" Celestion Creamback H.
- 1 x 12" Celestion Vintage 30.
- Stereo / Mono input switch.
- Dual speaker inputs (parallel mono).
- 16 Ohms mono, 8 Ohms per side stereo.

# CLASSIC® SERIES

## TIMELESS CLASSICS FROM AN AMERICAN ORIGINAL

Quite possibly, no other amplifier bearing the Peavey name is nearer to Hartley Peavey's heart than the Classic® Series. Born where blues and rock & roll began, these amplifiers come alive with vintage vibes, versatility and a timeless design from one of America's enduring musical innovators. The Classic Series is the sound of Mississippi Delta soul and is as close to the source as you'll ever get.

These amps are drenched in the tone that can only come from the combination of three 12AX7 and four EL84 tubes. Add features like 3-band EQ, footswitchable dual channels, footswitchable boost, reverb, and a footswitchable effects loop, and you have one of the most versatile amplifiers on the market. Classic looks, classic tone. Get it all with Peavey Classics!







**ALL PEAVEY CLASSICS FEATURE THE SINGING SOUND OF EL-84 TUBES!**

## CLASSIC® 50/212

50 watts RMS into 16 or 8 ohms; Four EL84s and three 12AX7s; two 12" Celestion® speakers; Fan cooled; 2-channel preamp; Normal and bright inputs; Pre- and post-gain controls on lead channel; Active presence control; 3-band passive EQ (bass, middle, treble); Master volume control; Standby switch; Reverb level control; Effects loop; External speaker capability; Footswitch jacks for channel switching/boost and reverb (two-button footswitch included); Classic tweed covering; Chrome-plated chassis.

**Dimensions (HxWxD):** 20" x 26.5" x 11.3" / 508mm x 673mm x 287mm

**Weight:** 59.6lbs / 27kg 03323550

## CLASSIC® 50/410

50 watts RMS into 16 or 8 ohms; Four EL84s and three 12AX7s; four 10" Celestion® speakers; Fan cooled; 2-channel preamp; Normal and bright inputs; Pre- and post-gain controls on lead channel; Active presence control; 3-band passive EQ (bass, middle, treble); Master volume control; Standby switch; Reverb level control; Effects loop; External speaker capability; Footswitch jacks for channel switching/boost and reverb (two-button footswitch included); Classic tweed covering; Chrome-plated chassis.

**Dimensions (HxWxD):** 24" x 24.4" x 11.1" / 609.6mm x 619.7mm x 282mm

**Weight:** 62.8lbs / 28.5kg 03323560

## CLASSIC® 30/112

30 watts RMS into 16 or 8 ohms; Four EL84s and three 12AX7s; one 12" Celestion® speaker; 2-channel preamp; Normal volume control on clean channel; Genuine Spring Reverb with level control; Effects loop; Pre- and post-gain controls on lead channel; 3-band passive EQ (bass, middle, treble); Boost switch; Standby Switch; External speaker capability; Footswitch included; Footswitch jacks for channel switching/boost and reverb; Classic tweed covering; Chrome-plated chassis.

**Dimensions (HxWxD):** 17.6" x 20" x 11.6" / 447mm x 508mm x 294.7mm

**Weight:** 39.5lbs / 18kg 03602930

## DELTA BLUES™ 115

30 watts RMS into 16 or 8 ohms; Four EL84s and three 12AX7s; one 15" Celestion® speaker; 2-channel preamp; Normal volume control on clean channel; Master reverb; Effects loop; Pre- and post-gain controls on lead channel; 3-band passive EQ (bass, middle, treble); Boost switch; Standby Switch; External speaker capability; Tremolo with speed and intensity; Footswitch included; Footswitch jacks for channel switching/boost and reverb/tremolo; Classic tweed covering; Chrome-plated chassis.

**Dimensions (HxWxD):** 20.6" x 22.5" x 11.1" / 523.2mm x 572mm x 282mm

**Weight:** 46.3lbs/21kg 03327810

## DELTA BLUES™ 210

30 watts RMS into 16 or 8 ohms; Four EL84s and three 12AX7s; two 10" Celestion® speakers; 2-channel preamp; Normal volume control on clean channel; Master reverb; Effects loop; Pre- and post-gain controls on lead channel; 3-band passive EQ (bass, middle, treble); Boost switch; External speaker capability; Tremolo with speed and intensity; Footswitch included; Footswitch jacks for channel switching/boost and reverb/tremolo; Classic tweed covering; Chrome-plated chassis

**Dimensions (HxWxD):** 20.6" x 22.5" x 11.1" / 523.2mm x 572mm x 282mm

**Weight:** 45lbs / 20.4kg 03386550

## CLASSIC® 20 MH

Attenuator switch for 20 watts, 5 watts or 1 watt output power; Two EL84 power tubes and three 12AX7/ECC83 preamp tubes; Two footswitchable channels with 3-band EQ; Footswitchable global volume boost, reverb, and effects loop; Footswitch included; Tube Status Indication (T.S.I.™) circuit; Impedance switch for 16 or 8 ohm cabinets; MSDI™ Output with XLR and ground lift switch; USB Output; Speaker defeat switch; Headphone output.

**Dimensions (HxWxD):** 7.5" x 14.375" x 7.5" / 191mm x 365mm x 191mm.

**Weight:** 16lbs / 7.26kg 03614150

# PEAVEY EXTENSION CABS

## 112-C CELESTION EQUIPPED

Tweed Tolex covering; Metal corners; 16 ohms; Rubber feet; Top handle; 18mm plywood construction; Convertible open back closed back; One Celestion 12" Vintage 30 speaker.

Dimensions (HxWxD): 20.5" x 14" x 25"

520.7mm x 355.6mm x 635mm

Weight: 39lbs / 17.69kg 03614680

## 212-C CELESTION EQUIPPED

Tweed Tolex covering; Metal corners; 16 ohms/8 ohms side/stereo; Stereo / Mono input cup; Rubber feet; Top handle; 18mm plywood construction; Convertible open back/closed back; Feet on short side as well; Logo mounting plate on short side so user can move it; One Celestion 12" Vintage 30 speaker; One Celestion 12" G12T-75 speaker.

Dimensions (HxWxD): 21" x 14" x 30.5"

533.4mm x 355.6mm x 774.7mm

Weight: 51.4lbs / 23.31kg 03615000

## 112-6 CELESTION EQUIPPED

Black Tolex covering; Metal corners; 16 ohms Mono/8 ohms per side, switchable; Rubber feet; Top handles; 18mm Plywood construction; Convertible open back/ closed back; Feet on short side as well; Logo mounting plate on short side so user can move it; One Celestion 12" Greenback 25 speaker; White piping.

Dimensions (HxWxD): 20.5" x 14" x 25"

520.7mm x 355.6mm x 635mm

Weight: 39lbs / 17.69kg 03614690

## 212-6 CELESTION EQUIPPED

Black Tolex covering; Metal corners; Stereo/Mono input cup; Rubber feet; Top handle; 18mm plywood construction; Convertible open back/closed back; Feet on short side as well; Logo mounting plate on short side so user can move it; Two Celestion 12" Greenback 25 speakers; White piping.

Dimensions (HxWxD): 21" x 14" x 30.5"

533.4mm x 355.6mm x 774.7mm

Weight: 51.4lbs / 23.31kg 03615010

## PEAVEY 112

One 12" Blue Marvel® speaker; 16 ohms; 40 watt RMS; Mono input jack.

Dimensions (HxWxD): 17.5" x 11.5" x 20.5"

444.5mm x 292.1mm x 520.7mm

Weight: 27.78lbs / 12.6kg 03611000

## PEAVEY 212

Two 12" Blue Marvel® speakers; 16 ohms; 80 watt RMS; Mono input jack.

Dimensions (HxWxD): 18.75" x 28" x 11.625"

476.25mm x 711.2mm x 729.528mm

Weight: 47lbs / 21.318kg 03615050



CELESTION



# VALVEKING® SERIES GUITAR AMPS

*The Peavey ValveKing® Series, putting authentic boutique tone and technology into the hands of real working musicians!*



## VALVEKING® MH

Two EL84 and three 12AX7 tubes; 2x Footswitch inputs – one controls Channel & Boost, one controls Reverb & Effects loop; Gain boost on lead channel; Reverb with level control; Buffered effects loop; Vari-Class™ variable Class A simulation control; Exclusive Microphone Simulated Direct Interface (MSDI™) with ground lift and speaker defeat; Speaker output with impedance switch; T.S.I.™ tube monitoring with LED pass/fail indicator lights; Headphone output; Footswitch input; Microphone Simulated USB Recording output; 3-band EQ; 20W, 5W, and 1W power switch.

Dimensions (HxWxD): 7.25" x 14" x 7.75" / 184mm x 356mm x 197mm

Weight: 14.6lbs / 7 kg 03608850

## VALVEKING® HEAD

Four 6L6GC and three 12AX7 tubes; Two independent footswitchable channels; Separate EQ for each channel; Footswitchable gain/volume boost on lead channel; Reverb with level control; Buffered effects loop; Resonance & Presence controls; Vari-Class™ variable Class A simulation control; Exclusive Microphone Simulated Direct Interface (MSDI™) output with ground lift and speaker defeat switch; Two powered outputs with impedance switch for using an external cabinet; 100W, 25W, and 5W power switch; T.S.I.™ tube monitoring with LED pass/fail indicator lights; Two footswitch inputs – one controls Channel & Boost, one controls Reverb & Effects loop; USB direct recording output; Bright switch on Clean channel.

Dimensions (HxWxD): 9.75" x 26.50" x 11.13" / 248mm x 673mm x 283mm

Weight: 38lbs / 17 kg 03608820

## VALVEKING® COMBO 20

Two EL84 and three 12AX7 tubes; Two independent footswitchable channels; Separate EQ for each channel; Footswitchable gain/volume boost on lead channel; Reverb with level control; Buffered effects loop; Damping control – controls Presence and Resonance at the same time; Vari-Class™ variable Class A simulation control; Exclusive Microphone Simulated Direct Interface (MSDI™) output with ground lift and speaker mute switch; One 12" ValveKing® Speaker; Two powered outputs with impedance switch for using an external cabinet; 20W, 5W, and 1W power switch; T.S.I.™ tube monitoring with LED pass/fail indicator lights; Two footswitch inputs – one controls Channel & Boost, one controls Reverb & Effects loop; USB direct recording output.

Dimensions (HxWxD): 20.5" x 22" x 10.25" / 521mm x 559mm x 260mm;

Weight: 37.6lbs / 17 kg 03608790

## VALVEKING® COMBO 50

Two 6L6GC and three 12AX7 tubes; Two independent footswitchable channels; Separate EQ for each channel; Footswitchable gain/volume boost on lead channel; Reverb with level control; Buffered effects loop; Damping control controls Presence and Resonance at the same time; Vari-Class™ variable Class A simulation control; Exclusive Microphone Simulated Direct Interface (MSDI™) output with ground lift and speaker mute switch; One 12" ValveKing® Speaker; Two powered outputs with impedance switch for using an external cabinet; 50W, 12W, and 2W power switch; T.S.I.™ tube monitoring with LED pass/fail indicator lights; Two footswitch inputs – one controls Channel & Boost, one controls Reverb & Effects loop; USB direct recording output.

Dimensions (HxWxD): 20.50" x 22" x 10.2" / 521mm x 559mm x 260mm

Weight: 40.6lbs / 18 kg 03608760

ALL TUBE BASES ARE  
PROPER CERAMIC TYPES  
(NO PLASTIC ANYWHERE).



WELDED STEEL TRANSFORMERS  
FOR MAXIMUM RELIABILITY.

ALL-TUBE SIGNAL PATH.

FEATURES A VERY RICH AND CONSISTENT REVERB WITH  
LEVEL CONTROL. THE REVERB IS SELF CONTAINED AND  
STATE-OF-THE-ART WITH NO WIRES OR OTHER MOVING  
PARTS TO FAIL.

VALVEKING FEATURES T.S.I.™ TUBE MONITORING WITH LED  
PASS/FAIL INDICATOR LIGHTS. THIS MEANS IF A POWER TUBE  
FAILS, YOU'LL KNOW WHICH ONE TO REPLACE TO MAKE IT  
THROUGH THE GIG!

SPEAKER DEFEAT WITH BUILT-IN  
IMPEDANCE LOAD PROTECTION.

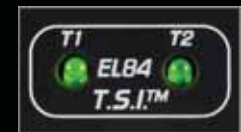


BUILT-IN POWER  
ATTENUATOR

PATENTED MSDI™ TRANSFORMER BALANCED XLR  
OUTPUT WITH SPEAKER DEFEAT.



Record the King with two cabinet  
simulated direct output options



T.S.I.™ tube monitoring with LED pass/fail  
indicator lights



Vari-Class™ control adjusts response from Class  
A/B to Class A, or any tone in-between.


 A close-up photograph of the VYPYR PRO-100 guitar amplifier's control panel. The panel is silver with black knobs and buttons. A green button labeled 'CL50' is visible, along with a red button labeled '6505'. A 'model 2' label is also present. The VYPYR PRO-100 logo is printed on the left side of the panel. The background is dark with some blue and red lighting effects.
 

**VYPYR®  
PRO-100**

# VYPYR® PRO-100

**THE BEST SOUNDING, MOST CAPABLE MODELING AMP EVER!**  
LIMITLESS OPTIONS EVERY EFFECT • EVERY SOUND

From the company that brought you the revolutionary VYPYR® and VYPYR VIP series comes the evolution of the most advanced modeling amplifier on the planet. The VYPYR Pro continues the tradition of cutting-edge technology using 4 stages of TransTube® analog gain to create the most realistic tube sounding distortion in any modeling amplifier. By using analog distortion, the VYPYR Pro's digital processor has the amazing ability to offer almost limitless combinations of additional stompboxes, "rack" effects, amplifiers, and even instrument models. The result is an overall better tonality.

Because of the advanced dual processor design, the VYPYR Pro can run up to four amplifier models in parallel. Using the VYPYR Pro's unique architecture, the VYPYR is capable of designing a variety of signal path combinations. Four module bays, each with their own distinct LCD, can be assigned to an amplifier, effect, stompbox, or, in the first position, an instrument model. The modules can be assigned in any order, allowing the user the ability to create the exact rig they desire, even if they desire to run two or up to four amplifiers in parallel.

With up to five parameters to precisely control effects, multiple delay types and advanced features such as MSDI (microphone simulated direct interface), direct output, effects loop, and MIDI control allow the professional player to create the rig of their dreams inside a single combo amplifier.

Recording is a mainstay of the VYPYR Pro design. With the most advanced USB audio system in any VYPYR, the Pro was designed from the beginning for home recording. The VYPYR Pro also features an analog speaker and microphone simulated direct out for recording as well.

With over 500 presets available and more than 100 different models of effects, reverbs, delays, and amplifiers, the VYPYR Pro is the most innovative and advanced modeling amplifier on the planet. Designed for the working musician by the working musicians at Peavey Electronics, it is perhaps the most versatile amp ever created.





## SANPERA® PRO FOOT CONTROLLER

The perfect companion for the VYPYR Pro, Peavey's updated Sanpera® Pro foot controller unlocks all the power of the VYPYR Pro. Utilizing dual expression pedals, which can be assigned to the default setting (volume on left, wah on right), or up to three parameters each, the Sanpera Pro foot controller is also range definable! The foot controller also features a boost switch, tap tempo, a chromatic tuner, and looper controls that allow users to generate multitrack loops.

Two expression pedals; Direct access to all four models, plus delay and reverb; Boost switch; Tap Tempo; Chromatic tuner; Full looper controls; Expression pedal assignable to any parameter and range definable; Self-powered via VYPYR® amplifier; MIDI output for connecting to outboard MIDI gear, including the AT-200 guitar. NOTE: Additional software required, available at [www.autotuneforguitar.com](http://www.autotuneforguitar.com)

## VYPYR® PRO-100

Over 100 different amp, effect, stompbox and instrument models; Advanced WYSIWYG (What You See Is What You Get) interface; Four selectable tone model modes with LCD; Real-time control over Delay and Reverb; Real-time model parameter control; Advanced Bi-Directional USB connector; Onboard Tap Tempo; Studio quality headphone out; Mp3/CD/Aux input; MIDI; Analog TransTube® preamp; 100 watts; Custom voiced 12" speaker specifically designed for modeling; Over 500 user assignable presets; Multi-parameter effects control; Dual DSP's for processing speed and capability; Power Sponge® output power adjustment; Onboard chromatic tuner; Onboard overdubbing looper (with optional Sanpera footswitch); Effects loop; 3 adjustable noise gates; Multiple delay and reverb types: Tape delay, tube delay, modulation delay, analog delay, digital delay, plate verb, room verb, cathedral verb, hall verb, tile verb, gated verb, spring verb; Presence and Resonance adjustment; Assignable input attenuator; Built-in microphone simulated direct out; MIDI output for connecting to outboard MIDI gear, including the AT-200™. NOTE: additional software required, available at [www.autotuneforguitar.com](http://www.autotuneforguitar.com).

Dimensions (HxWxD): 19.75" x 22.75" x 10" / 501.65mm x 757.85mm x 254mm 03608100

# VYPYR® VIP

## ONE AMP FOR ELECTRIC, ACOUSTIC AND BASS GUITAR!

All of the revolutionary features from the original VYPYR® series are now even better. More power, more effects, more amp models, Variable Instrument Input, instrument models, and more make this the ultimate amplifier.

Peavey Electronics revolutionized the modeling amp industry with the world's first Variable Instrument Performance amplifier, the VYPYR® VIP – the world's first amp that contains electric guitar, bass guitar, and acoustic guitar amplifier models. Using our Variable Instrument Input, a single amp can provide amplification for a variety of instrument types.

Not only does the amplifier morph from a bass amp to an acoustic amp, to an electric amp, it also allows the electric guitar player access to instrument models as well – another Peavey first! The VYPYR VIP's astonishingly realistic instrument simulations allow users to manipulate the sound of their electric guitar to mimic an acoustic guitar, a bass, a 12-string guitar, and more!

Peavey uses a combination of a powerful 32-bit, floating point SHARC processor and Peavey's exclusive TransTube® analog circuitry to create the best sounding modeling amplifiers available.

All VYPYR effects, amp models and parameter controls can be accessed via the amp itself, with no need to hook the amplifier to a computer. Peavey's WYSIWYG (What You See Is What You Get) control surface quickly allows the user the ability to see and adjust the control position – no guessing where the control is supposed to be or having to manually move it to where it should be from preset to preset.

VYPYR's USB bi-directional data and audio port provide an easy way to record, connect to our VYPYR software and store presets, get lessons, and practice to backing tracks while connected to your computer.







# VYPYR® VIP

UP TO 71 EDITABLE MODELS

36 AMP MODELS

25 EFFECT MODELS

10 ON BOARD INSTRUMENT MODELS







## VYPYR® VIP-1

Variable Instrument Input (Electric, Acoustic, & Bass); 20 watts RMS; 8" Custom Voiced Heavy Duty Speaker; Acoustic Guitar Simulation; Bass Guitar Simulation; Two Bass Amp Models; Two Acoustic Amp Models; Onboard Looper\*; WYSIWYG LED Indicator Controls; Bi-directional USB (Data-MIDI-Audio Record Out) – iOS Device Compatible\*\*.

Dimensions (HxWxD): 15" x 16.584" x 8.5" / 381mm x 421.23mm x 215.9mm  
Weight: 17.5lbs / 7.93kg 03608060

## VYPYR® VIP-2

Variable Instrument Input (Electric, Acoustic, & Bass); 40 watts RMS; 12" Custom Voiced Heavy Duty Speaker; Ten Instrument Models; Six Bass Amp Models; Six Acoustic Amp Models; On-Board Looper\*; WYSIWYG LED Indicator Controls; Bi-directional USB (Data-MIDI-Audio Record Out) – iOS Device Compatible\*\*; Up to five Effects Simultaneously\*.

Dimensions (HxWxD): 17.7" x 19.59" x 10" / 449.58mm x 497.58mm x 254mm  
Weight: 26lbs / 11.79kg 03608080



## VYPYR® VIP-3

Variable Instrument Input (Electric, Acoustic, & Bass); 100 watts RMS; 12" Custom Voiced Heavy Duty Speaker; Power Sponge® 100 watts to 1 Watt; LCD Display for Quick Preset, Model, and Effect Selection; Ten Instrument Models; Six Bass Amp Models; Six Acoustic Amp Models; Onboard Looper\*; WYSIWYG LED Indicator Controls; Amp Accessible Real-Time Parameter Controls; Bi-directional USB (Data-MIDI-Audio Record Out) – iOS Device Compatible\*\*; Up to five Effects Simultaneously\*.

Dimensions (HxWxD): 19" x 19.56" x 10" / 482.6mm x 496.6mm x 486.82mm  
Weight: 31lbs / 14.06kg 03608160

## VYPYR® EDIT

Peavey's VYPYR Edit software for the award-winning VYPYR VIP series gives guitarists the opportunity to get more in-depth with the capabilities of these amplifiers than ever before.

After installing the free software, guitarists can simply connect to Vypyr Edit using the Vypyr VIP's USB bi-directional data and audio port. Once inside the software, users are provided with a complete virtual representation of their Vypyr VIP amplifier. Any adjustments made by the user within the software are directly shown on the amp, and any adjustments made to the amp are also represented in the software.

Guitarists can choose from a wide selection of instrument models, stompbox effects and well-known Peavey amp models to create fully customized tones. Plus, Vypyr Edit allows users to save and load their setting presets and preset banks, and even share them with the global Vypyr community. These customized presets and banks can also be saved to the user's Vypyr VIP amplifier.

Vypyr Edit also contains backing tracks, allowing users to play along using any of the presets they have created.



### SANPERA® II FOOT CONTROLLER

Two expression pedals offer real-time control over Volume, Wah, Pitch Shifter, Rotary Speaker and Slicer; Ten momentary selector buttons with LEDs; Swappable expression pedals; Dedicated tap tempo capabilities; Looper control; Bank increment/decrement function; Roadworthy cast-metal housing; High-quality metal switches; Self-power via MIDI; Large LCD display; Preset select or instant on/off effects operation; Access almost any VYPYR® amp function; On-screen tuner.

Dimensions (HxWxD): 2.75" x 26.75" x 10" / 69.85mm x 679.45mm x 254mm 03017540



### SANPERA® I FOOT CONTROLLER

Expression pedal offers real-time control over Volume, Wah, Pitch Shifter, Rotary Speaker and Slicer; Four momentary selector buttons with LEDs; Looper activation and control; Bank select function; Roadworthy cast-metal housing; High-quality metal switches.

Dimensions (HxWxD): 2.75" x 9.50" x 9.25" / 69.85mm x 241.3mm x 234.95mm 03017550





# ECOUSTIC® SERIES ACOUSTIC GUITAR AMPS

CAPTURE THE TRUE ESSENCE OF YOUR ACOUSTIC SOUND!



ECOUSTIC® E20



ECOUSTIC® E208



ECOUSTIC® E110

As an acoustic artist your main concern should be your performance and not your sound. With an array of effects and EQ possibilities, the

Peavey Ecooustic Series acoustic guitar amplifiers allow you to hone in on your unique voicing. These are truly set-it-and-forget-it amplifiers.

## ECOUSTIC® E20

8" premium full-range loudspeaker; Two separate channels; 2-band EQ per channel; Headphone out; 20 watts of clean Peavey power.

Dimensions (HxWxD): 14.25" x 13.75" x 9" / 362mm x 349.3mm x 228.6mm Weight: 17.4lbs / 7.9kg 03599640

## ECOUSTIC® E208

Two channels; Two 8" premium full-range loudspeakers; 1/4" input on channel 1 & combo XLR-1/4" input on channel 2; Headphone output; Analog chorus, assignable to either channel; Spring reverb; Separate level controls for each channel; Dedicated EQ for each channel; 30 watts of power.

Dimensions (HxWxD): 15" x 19.325" x 8.75" / 381mm x 491mm x 222.3mm Weight: 25lbs / 11.34kg 03599680

## ECOUSTIC® E110

*Footswitch Included*

10" full-range loudspeaker and a high-frequency piezo tweeter; Two channels; Both channels operate independently, with 9-band graphic EQ on channel 1 and 2-band adjustment on channel 2, a Notch Filter and Phase Inverter on channel 1 to control feedback, footswitchable Mute/Tuner, and more; Combo XLR-1/4" input on channels 1 & 2; Separate level controls for each channel; Dedicated EQ for each channel; Master section includes digital reverb, chorus, and delay with channel assignment and parameter adjustment, and the included footswitch allows users to access up to eight presets plus an onboard looper; 100 watts of clean power.

Dimensions (HxWxD): 18" x 20.7" x 14.7" / 457.2mm x 525.8mm x 373.4mm Weight: 45lbs / 20.4kg 03615510



Ecooustic Footswitch



Session® 115

## SESSION® 115



### ROADWORTHY AND VERY LIGHTWEIGHT SOLID STATE DESIGN

With concessions for pedal steel, lap steel, fiddle, ukulele, banjo, accordion, or whatever application you may need for clean and honest reproduction of any musical instrument. The Session® 115 was meticulously voiced using basic and proven Peavey pedal steel amp designs into a 500W stereo beast (250W with internal 15" Neodymium 1501-4 Black Widow® speaker) that works equally well for a variety of instruments.

**1x15" finger jointed Pine cabinet construction; 1501-4BW neodymium speaker (4 Ohms); Pre Gain; Front end boost circuit (remote switchable); Pre-EQ loop for volume pedals; Classic Peavey Low, Mid, Mid Shift, High, and Presence EQ; Post-EQ effects loop (remote switchable); Spring reverb level (remote switchable); EFX Parameter controls for Chorus Depth/Rate, Plate Reverb level, Delay Level/Feedback; Remote switchable Tap Tempo for Delay; delay and reverb "tails" remain intact during any switching; Master Gain control; 500W RMS Stereo Power (250W per side into 4 Ohms); Proprietary MIDI Remote Controller included; MIDI protocol for remote switching; Stereo MSDI outputs; 1/4" Speaker outputs; Stereo Effects loops (rear; remote switchable) which sum to mono when only one cabinet is used.**

**Dimensions (HxWxD):** 21.6" x 24.6" x 11.5" / 548.64mm x 624.84mm x 292mm

**Weight:** 43.41lbs / 19.69kg 03615920

## 115-N EXTENSION CAB



The Peavey 115-N Extension Cabinet is perfectly suited for use with the new Session® 115 Steel Guitar Amp to make full use of the amp's stereo capabilities. This cabinet is also a great choice for use with any number of other amplifiers where high sound pressure levels, full-range frequency response, and faithful reproduction of a given amplifier is desirable. It is also a great complement to Peavey steel amps of days past.

**1x12" finger jointed Pine cabinet construction;**

**1501-4BW neodymium speaker; 4 Ohms mono.**

**Dimensions (HxWxD):** 18.9" x 24.6" x 11.5" / 480mm x 624.84mm x 292mm

**Weight:** 33.6lbs / 15.24kg 03615040



Nashville™ 112

## NASHVILLE™ 112

### THE BENCHMARK FOR STEEL-GUITAR AMPLIFIERS

Engineered for both performances and recording sessions, the Nashville™ 112 provides 80 watts of power and a specially voiced 12" Blue Marvel® speaker, pre-EQ patch send and return, footswitchable effects loop and reverb, preamp output, power-amp input patch capability and modified active low, mid, mid shift, high and presence tone controls. After nearly four decades, the Peavey Nashville is still the standard for country music's top steel players.

**Compact size, all-plywood enclosure; DDT® compression speaker protection; Pre-EQ patch send return for volume pedal patch; Footswitchable post-EQ effects loop; Modified active low, mid, mid/shift, high and presence EQ; Preamp out/CD in and power amp in patch; Footswitchable effects and reverb; Master gain control; Headphone input jack that defeats internal speaker for quiet rehearsal; 80 watts, 12" Blue Marvel® speaker (specially voiced for steel).**

**Dimensions (HxWxD):** 18.125" x 21.375" x 9" / 460.4mm x 543mm x 228.6mm

**Weight:** 41lbs / 18.6kg 00459770



115-N Extension Cab





## ROBERT RANDOLPH SIGNATURE STEEL AMP

The Randolph Signature Steel Amp has a classic Peavey appearance that will be immediately familiar, but is jam-packed with modern features designed with and for Robert Randolph, one of the most recognizable and accomplished steel players of the modern era.

**Pre Gain; Front end boost circuit (remote switchable); Pre-EQ loop for volume pedals; Post-EQ effects loop (remote switchable); Spring reverb level (remote switchable); EFX Parameter controls for Chorus Depth/Rate, Plate Reverb level, Delay Level/Feedback; Remote switchable Tap Tempo for Delay; Remote switchable digital effects defeat; All delay and reverb "tails" remain intact during any switching; Master Gain control; 500W RMS Stereo Power (250W per side into 4 Ohms); Proprietary MIDI Remote Controller included; MIDI protocol for remote switching; Stereo MSDIs with ground lifts; 1/4" Speaker outputs; Stereo Effects loops (rear; remote switchable) which sum to mono when only one cabinet is used; Special EQ voicing- voiced to Robert Randolph's exact specifications.**

**Dimensions (HxWxD):** 9.5" x 24.5" x 11" / 242mm x 623mm x 280mm

**Weight:** 29lbs / 13.2kg 03615060

## 212-RR ENCLOSURE

**18mm plywood construction closed back; 2 x Stephens™ STG-12 speakers; 8 Ohms per side stereo or 4 Ohms mono.**

**Dimensions (HxWxD):** 21" x 30.5" x 16.5" / 533.4mm x 774.7mm x 419.1mm

**Weight:** 71.4lbs / 32.39kg 03615030





**WORLD RENOWNED**  
**PEAVEY TRANSTUBE® AMPS!**



# TRANSTUBE® GUITAR AMPS

*THE SOUND OF TUBE AMPS WITH THE CONVENIENCE AND RELIABILITY OF SOLID-STATE*

Peavey TransTube® Series guitar amps feature our exclusive TransTube technology, which emulates the sound of tube amplifiers with the convenience and reliability of solid-state design. The TransTube preamp tailors the gain level for the desired amount of drive, and the power amp responds to the preamp with natural compression that increases with the amp's volume. The result is a line of amplifiers with widely ranging dynamics and natural "grit," just like a real tube amp.



## SPECIAL® CHORUS 212

100 watt TransTube® output section; Two independent channels: Clean and Lead; Two 12" Peavey Blue Marvel® loudspeakers; Chorus with Depth and Rate controls, defeatable per channel; Effects loop; Footswitch jack for global effects; defeat, volume boost and channel switching; Genuine spring reverb and analog chorus; Clean channel features 3-band EQ plus a Presence control; Lead channel features 3-band EQ, Pre Gain control with Gain Boost, Mid Scoop and Post Gain.

Dimensions (HxWxD): 26.5" x 19.5" x 9.5" / 495.3mm x 373mm x 241.3mm Weight: 38.58lbs / 17.5kg 03601610

## BANDIT® 112

100 watts RMS into 4 ohms (w/ external speaker); 12" Blue Marvel® speaker; High and Low Gain inputs; TransTube tube emulation circuitry; Footswitchable Clean and Lead channels; 3-band passive EQ on each channel; 3 position EQ/Gain Voicing switch on each channel; Reverb with level control; Footswitchable Boost with level control; 1/4" stereo Speaker Simulated Direct Out jack with level control; Footswitch optional; 80 watts RMS into 8 ohms.

Dimensions (HxWxD): 20" x 23.4" x 11.33" / 508mm x 594.4mm x 287.8mm Weight: 46.4lbs / 21kg 00583640

## ENVOY® 110

10" Blue Marvel® speaker; High and Low Gain inputs; TransTube tube emulation circuitry; Footswitchable Clean and Lead channels; 3 band passive EQ on each channel; 3 position EQ/Gain Voicing switch on each channel; Reverb with level control; Footswitchable Boost with level control; 1/4" stereo Speaker Simulated Direct Out jack; Headphone jack; Footswitch optional; 40 watts RMS.

Dimensions (HxWxD): 16.1" x 18.14" x 9.3" / 409mm x 460.8mm x 236mm Weight: 23lbs / 10.4kg 00583560

## RAGE® 258

8" super-duty Blue Marvel® speaker; Two switchable channels: clean and lead; 3-band EQ; Tape/CD input; Modern/vintage voicing switch; Headphone jack; 25 watts RMS.

Dimensions (HxWxD): 14.1" x 14.8" x 8.5" / 358mm x 376mm x 216mm Weight: 13.2lbs / 6kg 00583600

## SOLO®

12 watts RMS; 8" Blue Marvel speaker; TransTube tube emulation circuitry; Clean and Lead channels; 3-band passive EQ; 1/4" stereo CD Input/Direct Out jack; Low damping factor for lively tube power amp sound; Headphone jack.

Dimensions (HxWxD): 12.75" x 13.75" x 7" / 323.9mm x 349.3mm x 177.8mm Weight: 12lbs / 5.4kg 00584610

## BACKSTAGE®

6" custom designed speaker; TransTube® preamp with 2 switchable channels; Volume and Overdrive controls; 2-band EQ; Tape/CD input for practice; Headphone jack; 10 watts RMS.

Dimensions (HxWxD): 12" x 11.625" x 7" / 304.8mm x 295.3mm x 177.8mm Weight: 10lbs / 4.5kg 00590630

## AUDITION®

4" heavy-duty speaker; TransTube® tube emulation circuitry; Master Volume control; Clean & Lead channel switch; 2-band passive EQ; Headphone jack; 7 watts RMS into 8 ohms.

Dimensions (HxWxD): 8.75" x 9.125" x 5.125" / 222.3mm x 231.8mm x 130mm Weight: 10lbs / 4.5kg 00584790

Special® Chorus 212

Bandit® 112

Envoy® 110

Rage® 258

Solo®

Backstage®

Audition®







# KB® SERIES KEYBOARD AMPLIFIERS

*Power. Versatility. Killer Audio!*

The KB® Series gives musicians the power and reliability they need with a feature set that brings everything together in one convenient package. KB amps do much more than just amplify keyboards – they're complete sound systems for your band rehearsals or live performances. With up to five independent channels, you can run your keyboard plus a vocal mic, guitar, bass, drum machine, backing tracks, sampler – the possibilities are wide open.



Recessed wheels and a heavy-duty pop-up handle make getting the KB4 and KB5 from your space to the stage quick and easy!



## KB® 5

150 watts/200 watts with external speaker; Stereo mixer with 2-band EQ and main effects send/return; Mic/line channel with 3-band EQ and effects send/return; Monitor input with level control and assign; Headphone out with level control; Built-in casters and handle for easy moving; Two 10" speakers and horn.

Dimensions (HxWxD): 24.38" x 23.8" x 18.3" / 619.3mm x 604.5mm x 464.8mm

Weight: 85.8lbs / 39kg 00573260

## KB® 4

15" speaker and tweeter; 75 watts / 100 watts with external speaker; Channels 1 & 2 have stereo 1/4" inputs; Channel 3 features stereo 1/4" and mono XLR inputs; Channel 4 features 1/4" monitor input; Stereo mixer with 2-band EQ and main effects send/return; Mic / Line channel with 3-band EQ and effects send/return; Monitor input with level control and assign; Headphone out with level control; Built-in casters and handle for easy moving; 4 Channel.

Dimensions (HxWxD): 24" x 23.8" x 18.3" / 609.6mm x 604.5mm x 464.8mm

Weight: 72lbs / 32.2kg 00573220



## KB® 3

Extension cab capability extends power rating out to 80 watts; Four separate channels; Channels 1 & 2 have 2-band EQ; Channel 3 has 3-band EQ; Channels 1 & 2 have 1/4" inputs; Channel 3 features XLR and 1/4" inputs; Channel 4 features 1/4" monitor input with level control; Headphone out with level control; 12" speaker with tweeter; Effects send/return; Balanced XLR main out; 60 watts of clean Peavey power.

Dimensions (HxWxD): 20.37" x 14.25" x 22" / 517.4mm x 362mm x 555.5mm

Weight: 52.47lbs / 23.8kg 00573180

## KB® 2

Four separate channels; Channels 1 & 2 have 1/4" inputs; Channel 3 features XLR and 1/4" inputs; Channel 4 features 1/4" monitor input with level control; Channels 1 & 2 have 2-band EQ; Channel 3 has 3-band EQ; Headphone out; 10" coax speaker; FX send/return; Balanced XLR main out; Biamped 45 watts and 12 watts.

Dimensions (HxWxD): 17.75" x 17" x 12.5" / 450.9mm x 431.8mm x 317.5mm

Weight: 34lbs / 15.4kg 00573140

## KB® 1

8" extended range speaker; Two separate channels; 2-band EQ per channel; Headphone out; 20 watts of clean Peavey power.

Dimensions (HxWxD): 14.25" x 13.75" x 9" / 362mm x 349mm x 228.6mm

Weight: 17.4lbs / 7.9kg 00573100



# BASS AMPLIFIERS & CABS



# MiniMEGA®

Legendary Thump

Delivering classic Peavey tone, the MiniMEGA™ features 1,000 watts of power and produces incredibly full and rich sound in a compact package. Weighing in at only 9lbs, the MiniMEGA is the go-to amplifier for bassists of any style.

Using technology never found on other bass amps, the MiniMEGA represents a new level of compact bass amplifier performance. Peavey's proprietary Kosmos® bass enhancement provides increased bass impact, while the exclusive psychoacoustic low-end enhancement adds bass without overburdening speakers – a testament to Peavey's technology-driven innovation. The MiniMEGA also contains other modern features such as built-in compression and a 4-band EQ with semi-parametric mids.

Complete with an effects loop, gain control, crunch button, tuner output and more, the MiniMEGA contains everything necessary for today's professional bass player. Ideal for use in any live or studio setting, the back panel of the MiniMEGA has all the connectivity necessary to patch in effects or connect to a sound reinforcement system.

**1,000 watts continuous into 4 ohms (1,500 Watts burst power); Gain control with crunch button; Built-in optical compressor w/ defeat switch; 4-band EQ w/ Punch and Bright switches; Mid controls feature semi-parametric control with narrow Q controls; Built-in Kosmos® Bass Enhancement and Psychoacoustic Sub controls; Master volume with mute control; 1/8" headphone output; Two twist-lock combo 1/4" outputs; Tuner output; Effects loop with bypass; DI output with XLR & 1/4" outs. DI pre-post switch, ground lift and Pad controls; MIDI footswitch input; User-definable control surface color lighting; Foot-switchable crunch, compressor, Kosmos®, FX loop, and mute; DDT™ limiter.**  
03612360



**KOSMOS® BASS ENHANCEMENT**  
**1,000 WATTS RMS**  
**DDT™ LIMITER**  
**BUILT-IN COMPRESSOR**  
**USER-DEFINABLE CONTROL**  
**SURFACE COLOR LIGHTING**



# MiniMAX™

## 500 WATTS RMS OF POWERFUL, RICH LOW END.

Featuring the rock-solid construction for which Peavey is known, the MiniMAX™ is built to withstand years of rigorous touring use. The convenient back panel of the amplifier has all the connectivity necessary to patch in effects or connect to a sound reinforcement system.



With DDT™ speaker protection and Peavey's exclusive Psycho-acoustic low end enhancement that adds bass without overburdening speakers, the MiniMAX contains an impressive set of features and is available at a price accessible to today's working bassist.

The MiniMAX is capable of a huge array of tones and is adaptable to any live or studio setting. A 3-band EQ with Punch, Mid-shift, and Bright controls provides a multitude of tone-shaping options, while the built-in chromatic tuner allows for easy tuning on the fly. In addition, the MiniMAX pre-gain control with TransTube® gain boost adds a tube-like crunch to the sound.

The MiniMAX can be paired with Peavey's Headliner™ or PVH™ series of bass enclosures to complete a reliable, ultra lightweight professional bass system. Check out both of the Headliner and PVH™ series bass enclosures on page 100 to find your perfect match!

### MiniMAX™

500 watts RMS into 4 ohms; DDT speaker protection; Pre-gain control with TransTube® gain boost; 3-band EQ with Punch, Mid-shift and Bright controls; Psycho-acoustic low end bass enhancement; Built-in direct output with ground lift and pre/post switch; 1/8" aux input; 1/8" phones output; Chromatic tuner with speaker and DI mute; Two twist-lock combo 1/4" outputs; Built-in effects loop; Active & Passive inputs.

#### Dimensions (HxWxD):

3.25" x 10.75" x 6.625"  
82.55mm x 273.05mm x 168.275mm;

Weight: 5.6lbs / 2.54kg 03612300



5.6LBS



The MiniMAX comes with a convenient carrying bag.



# MAX® SERIES COMBOS

*Maximum Tone, Power & Portability*



With power ratings up to 300 watts with Peavey's DDT™ speaker protection and exclusive tone enhancements, the Peavey MAX® Series is designed for superior tone, performance, and reliability in bass amplification. Peavey MAX bass combo amps deliver huge bass tone with exclusive Peavey designs, including unique Psycho-acoustic low-end enhancement that adds bass without demanding anything extra from the speaker – a testament to Peavey's technology-driven reliability.



\*MAX 112 and MAX 110 feature a kick-back design.

## MAX® 115

300 watts into 8 ohms; DDT™ speaker protection; Pre-gain control with TransTube® gain boost, which automatically turns off the tweeter for more authentic, classic tone; 3-band EQ with Punch, Mid-shift and Bright controls; 15" speaker with high frequency tweeter; Psycho-acoustic low end enhancement; Built-in direct output with ground lift; 1/8" aux input; 1/8" phones output; Chromatic tuner; Tuned, ported enclosure. **Dimensions (HxWxD):** 23" x 18.25" x 14" / 514.35mm x 463.55mm x 355.6mm **Weight:** 50lbs / 22.68kg 03608210

## MAX® 112

200 watts into 8 ohms; DDT speaker protection; Pre-gain control with TransTube® gain boost; 3-band EQ with Punch, Mid-shift and Bright controls; 12" speaker; Psycho-acoustic low end enhancement; 1/8" aux input; 1/8" phones output; Chromatic tuner; Tuned, ported enclosure; Built-in direct output with ground lift; Kick-back design. **Dimensions (HxWxD):** 20.25" x 16.5" x 16.375" / 514.35mm x 419.1mm x 415.925mm **Weight:** 40lbs / 18.143kg 03608000

## MAX® 110

100 watts into 8 ohms; DDT speaker protection; Pre-gain control with TransTube® gain boost; 3-band EQ with Mid-shift control; 10" speaker; 1/8" aux input; 1/8" phones output; Chromatic tuner; Psycho-acoustic low end enhancement; Tuned, ported enclosure; Kick-back design. **Dimensions (HxWxD):** 18.25" x 15.125" x 13.75" / 463.55mm x 384.175mm x 349.25mm **Weight:** 35lbs / 15.88kg 03608190

## MAX® 158

20 watts RMS into 4 ohms; DDT speaker protection; 8" speaker; Low, Mid, and High EQ controls; Volume control with TransTube® distortion boost; Psycho-acoustic low end enhancement; 1/8" phones output; 1/8" aux input; Built-in chromatic tuner. **Dimensions (HxWxD):** 13.5" x 12" x 8.75" / 342.9mm x 304.8mm x 222.25mm **Weight:** 18.3lbs / 8.3kg 03602960

## MAX® 126

10 watts RMS into 4 ohms; Selectable "Vintage" Gain control with TransTube® circuitry; Volume control; Low and High EQ controls; 6.5" speaker; 1/4" Headphone jack; 1/4" aux input. **Dimensions (HxWxD):** 12.75" x 12.33" x 8.25" / 323.85mm x 313.182mm x 209.55mm **Weight:** 11lbs / 4.989kg 03608290



# BASS ENCLOSURES

*Designed For Gigging Bassists Who Need No-Nonsense, Rugged, And Dependable Cabs They Can Rely On Night After Night Of Touring.*

PVH™ series cabs were designed to be easier to transport without sacrificing internal volume needed to maximize efficiency and SPL. Featuring custom designed, high excursion, ceramic magnet woofers and advanced bracing features, these cabs are structured to withstand aggressive playing styles when using dropped tunings or extended range basses without losing tonal integrity. PVH cabs play louder and lower than any Peavey bass cabs to date.



## PVH™ 1516

Black carpet covering; Powder coated black metal grille; Heavy duty high excursion 15" speaker; Two mid / high 8" speakers; 3-position attenuator; Ported cabinet; Spring loaded handles; Metal corners; Heavy duty hardware; Two combi input jacks; Rugged 15mm plywood construction; 900 watts program power handling.

**Dimensions (HxWxD):** 29.75" x 22.25" x 17.63"

755.65mm x 755.65mm x 755.65mm

**Weight:** 74lbs / 33.5kg 03615070



## PVH™ 212

Black carpet covering; Powder coated black metal grille; High frequency horn tweeter with 3-position attenuator; Two heavy duty 12" speakers; Ported cabinet; Metal corners; Heavy duty hardware; Two combi input jacks; Spring loaded handles; Rugged 15mm plywood construction; 900 watts program power handling.

**Dimensions (HxWxD):**

29.75" x 22.25" x 17.63"

755.65mm x 565.15mm x 447.8mm

**Weight:** 76.5lbs / 34.7kg 03615090



## PVH™ 410

Black carpet covering; Powder coated black metal grille; High frequency horn tweeter with 3-position attenuator; Four heavy duty 10" speakers; Ported cabinet; Spring loaded handles; Metal corners; Heavy duty hardware; Two combi input jacks; Rugged 15mm plywood construction; 1,200 watts program power handling.

**Dimensions (HxWxD):**

29.75" x 22.25" x 17.63"

610mm x 594mm x 467mm

**Weight:** 83lbs / 37.6kg 03615100



## PVH™ 210

Black carpet covering; Powder coated black metal grille; High frequency horn tweeter with 3-position attenuator; Two heavy duty 12" speakers; Ported cabinet; Metal corners; Two combi input jacks; Rugged 15mm plywood construction; Heavy duty hardware; 600 watts program power handling.

**Dimensions (HxWxD):**

18.5" x 22.25" x 17.63"

469.9mm x 565.15mm x 447.8mm

**Weight:** 51lbs / 23.6kg 03615080

## HEADLINER® BASS ENCLOSURES



## HEADLINER® 112

Black carpet covering; Powder coated black metal grille; Heavy duty 12" speaker; Piezo tweeter with on / off switch; Ported cabinet; Metal corners; Two 1/4" and one twist-lock input cup.

**Dimensions (HxWxD):** 23.62" x 21.25" x 14.37"

600mm x 539.75mm x 365mm

**Weight:** 32lbs / 14.5kg 03609970



## HEADLINER® 410

800 watts program power handling; 1,600 watts peak; Four custom-designed 10" ceramic magnet woofers; 8 ohms impedance; 18mm ply cabinet with bracing and steel corners; 16-gauge perforated metal grille; Durable black carpet covering; Two 1/4" input jacks and one NL4 four-pin receptacle.

**Dimensions (HxWxD):**

24" x 23.38" x 18.38"

610mm x 594mm x 467mm

**Weight:** 72lbs / 32.7kg 03008690



## HEADLINER® 115

1,000 watts peak; 15" Sheffield bass woofer; 18mm ply cabinet with internal bracing and steel corners; 16-gauge perforated metal grille; Durable black carpet covering; Two 1/4" input jacks and one NL4 four-pin receptacle; Vented cabinet for powerful bass; 500 watts program power handling.

**Dimensions (HxWxD):**

24" x 23.38" x 18.38"

610mm x 594mm x 467mm

**Weight:** 63lbs / 28.6kg 03008700



## HEADLINER® 210

400 watts program power handling; 800 watts peak; Two custom-designed 10" ceramic magnet woofers; 8 ohms impedance; 18mm ply cabinet with internal bracing and steel corners; 16-gauge perforated metal grille; Durable black carpet covering; Two 1/4" input jacks and one NL4 four-pin receptacle.

**Dimensions (HxWxD):**

16.63" x 23.38" x 18.38"

422mm x 594mm x 467mm

**Weight:** 52lbs / 23.6kg 03008680





## HEADLINER® 1000 BASS AMPLIFIER HEAD

*Lightweight, 1,000-Watt Head Packs In Powerful Tones And Professional Features*

The Peavey Headliner® 1000 features a 7-band graphic EQ spaced at optimized frequencies, with each slider providing 15dB of cut and boost to provide comprehensive tone shaping frequencies optimized for bass guitar. Players can use the graphic EQ in conjunction with the low and high shelving-type tone controls or bypass the graphic EQ entirely.

A built-in optical Compressor with level control and bypass allows players to add just the right amount of compression to the mix. The Crunch feature adds a vintage tube effect that distorts only the high frequencies, preserving the all-important, fat low end. The amp also features Bright and Contour switches, an effects loop, master volume and headphone out. Compressor and Crunch features are footswitchable selectable.

A built-in XLR direct interface routes the signal to the house sound system or recording device, and an active/passive pickup switch compensates for active instrument inputs. Peavey's exclusive DDT™ speaker protection circuitry senses the onset of clipping and responds with slight limiting that allows the amp to retain tone, headroom, and dynamics (bypass included).

**1,000 watts RMS (1,500 watts peak power); 7-band graphic EQ; High and low EQ controls; Pre-shape contour switch; Active / passive pickup switch; Footswitchable optical compressor; Footswitchable crunch; Headphone output; Exclusive DDT™ speaker protection; XLR direct interface; Combination twist-lock and 1/4" external speaker jacks; 1 1/2 rack space.**

**Dimensions (HxWxD):** 2.813" x 17.375" x 12.5" / 71.5mm x 441.3mm x 317.5mm

**Weight:** 10lbs / 4.5kg  
03612150



**KICK BACK & JAM** — Send your TNT or TKO bass signal directly to the house sound system from the built-in XLR direct interface, then tilt back your amp and use it as a personal monitor!



The TNT 115 and TKO 115 are loaded with features such as Bright and Contour switches, 7 band EQ, effects loop, proprietary DDT™ speaker protection, and a convenient kick-back design. The TNT 115 also features the footswitchable optical compressor, active/passive pickup switch, and a tube-style Crunch switch.

## TNT® & TKO® BASS COMBOS

Looking for power (and lots of it)? The TNT 115 and TKO 115 have you covered. The TKO 115 pushes 400 watts, while the TNT delivers a staggering 600 watts. Where the competition uses off-the-shelf power amps and power supplies, Peavey designs proprietary class D amplifiers from scratch — specifically for bass amplifiers.



**TNT® 115 600 watts/TKO 115 400 watts maximum class D power; 15" specially designed speaker; High frequency tweeter; 7-band graphic EQ; High and Low Shelving controls; Pre shape contour switch; Bright switch; Active/Passive pickup switch; Crunch switch adds tube-like crunch effect; Compressor with defeat switch; Footswitch controls crunch and compressor (footswitch not included); Effects Loop; Master Volume; Headphone output; Tweeter on/off switch; DDT™ speaker protection; Powered speaker output with Speakon® jack; Convenient kick-back design; Legendary Peavey reliability; Lighted Peavey logo.**

**Dimensions (HxWxD):**

22" x 23.3" x 19.5" / 559mm x 591.8mm x 495.3mm

**Weight:** 74.3lbs / 33.7kg

**TNT® 115 03599550; TKO® 115 03599510**

# VB™-MA BASS AMPLIFIER AND CABS

## MICHAEL ANTHONY SIGNATURE SERIES

As a member of legendary bands, Michael Anthony has toured the globe, performing before millions of people. Anthony has relied on the Peavey VB™-3 exclusively and is now proud to share a uniquely voiced model that suits his exacting demands perfectly.

The dual-channelled VB-MA is styled with a striking red backlit panel that features Michael Anthony's chili pepper logo. The VB-MA combines four 12AX7 and two 12AT7 preamp tubes with a matched octet of EL34 tubes that give players tons of pentode tube tone with uncharacteristically tight response for an all-tube amplifier. The VB-MA features an innovative, and world-compatible switch-mode power supply, and stadium levels of huge tone, making it ideal for the touring musician.

When it comes to live performance, Anthony insists on rock-solid tonal control. That's why the VB-MA is loaded with a true independent second overdrive channel with separate EQ and Master Volume controls. But Anthony and Peavey didn't stop there. The addition of a unique Blend control enables players to blend between overdrive and clean channels for even more tonal flexibility.

Backing up the amplifier's organic tube tone is a vintage 3-band active / mid-cut EQ that combines traditional high and low tone controls with a mid control featuring a four-position mid-range selector switch that allows players to set the mid-frequency at 200, 450, 600 or 800Hz. Combined with the 9-band, constant-Q graphic equalizer – spaced at optimized frequencies, with each slider providing 15dB of cut and boost – the VB-MA allows for virtually any EQ curve imaginable.

Peavey's exclusive Resonance and Presence controls are useful in dialing in power and response for particular styles. This includes "tight" sounds that are not normally associated with tube amplifiers. The VB-MA features a three-way speaker impedance selector, to enable players to match the VB-MA to virtually any bass speaker enclosure. Voiced and styled to match the VB-MA tube bass amplifier, the VB-MA 810 bass enclosure features the exclusive Michael Anthony logo, and eight custom-designed 10" ceramic-magnet loudspeakers paired into four tone chambers. It can be operated in stereo or mono modes with 800 watts power handling.





MICHAEL ANTHONY

**VB™-MA**

Eight EL-34, four 12AX7 and two 12AT7 tubes; Bright switch; Low cut switch; Tube compressor with Level control; Master 9-band graphic EQ with defeat switch and LED; Low / Mid / Shift / High; Master Resonance and Presence controls; Single input; 15dB Pad switch; Mute switch with flashing blue LED; Power and Standby switches; Volume / Overdrive; Back-lit faceplate for Pilot; Striking red backlit panel with Michael Anthony's chili pepper logo; Buffered tuner send; Overdrive with blend control for blending in the overdrive with the clean channel with EQ control; Master effects loop; Universal power supply for worldwide compatibility; 300 Watts; Master volume.

**Dimensions (HxWxD):** 11.25" x 22.50" x 11.25" / 285.8mm x 571.5mm x 285.8mm

**Weight:** 37.04lbs / 16.8kg 03608250

**VB™-MA 810**

800 watts RMS power handling; Eight custom designed 10" ceramic magnet speakers; Four individual 2x10 chambers; Switchless stereo or mono operation; Heavy duty hardware; Durable bedliner covering; Black grille cloth.

**Dimensions (HxWxD):** 26.13" x 16.3" x 48.5" / 663.7mm x 414mm x 1232mm

**Weight:** 144.4lbs / 65.5kg 03608260

# ELECTRIC GUITARS

## JF-1™ SEMI-HOLLOWBODY GUITARS

Jazz and rock players alike will love the warm, rounded tones of the JF-1, a classy semi-hollowbody guitar with two humbucking pickups and three-way switching. Peavey takes this classic design one step further by angling the neck slightly to allow easy access to the upper registers.

Gloss finish; 24.75" scale; Figured maple cap and cream binding on body and neck; 22 frets; Neck radius 12"; Maple multi-laminate body; Multi-adjustable bridge and stop tailpiece; Two Peavey USA design humbucking pickups; Black/white/black pickguard; Two tone and two volume controls with three-way switch; Gold-plated hardware; Set-neck guitar with hard rock-maple neck Rosewood fretboard; Dual adjustable torsion rod.



SEAN BEAVAN / MUSICIAN / PRODUCER  
NIN / MARILYN MANSON / A PERFECT CIRCLE  
PHOTOGRAPHER: TJ SCOTT





**Black** 00532220

**Sunburst** 00532240

**Transparent Red** 00532230







# SC™ GUITAR SERIES

## SC SERIES FEATURES

6-string guitar with 24.75" scale and 22 frets; Neck radius 14"; Two volume and two tone controls with 3-way pickup toggle switch; Deep lower cutaway with scoop for extended access to upper register; Adjustable bridge with heavy-duty tailpiece and mounting hardware.

## SC-1 FEATURES

Rock maple neck with Rosewood fingerboard; Two Peavey Ceramic custom-designed humbucking pickups, harmonically positioned and frequency calibrated; Basswood body with integral center body section; 4-bolt neck attachment with steel plate for maximum body-to-neck contact; Body and neck color matched.

## SC-2 FEATURES

Rock maple neck with Rosewood fingerboard; Two Peavey custom-designed Alnico humbucking pickups, harmonically positioned and frequency calibrated; Basswood body with integral center body section; Set neck with "extended tail" construction; Body and neck color matched.



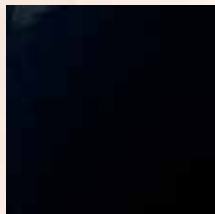
**SC-1 FIREBURST**  
03026460



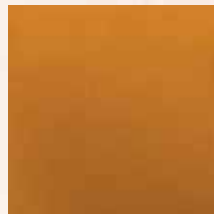
**SC-2 TRANSPARENT WINE RED**  
03026500



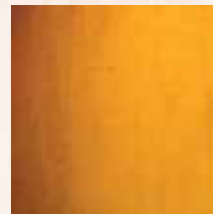
**SC-1 Cherryburst**  
03026470



**SC-1 Black**  
03026480



**SC-2 Gold**  
03026490



**SC-2 Honeyburst**  
03026510

# RAPTOR® CUSTOM GUITARS

Exclusive PowerPlate™ increases sustain; Rosewood or Maple fingerboard; 25.5" scale; 22 2.3mm frets; Hard Maple neck; Three Peavey USA design single coil pickups with 6mm large pole pieces; One volume and one tone control; Painted headstock; Dual adjustable truss rod; Basswood body; Vintage-style steel bridge; Case not included.



## Peavey Powerplate™

The Powerplate is a metal plate that is embedded into the back of the headstock which increases sustain and volume. The Powerplate is mounted using the machine heads and increases the amount of string vibration energy that is projected by the instrument.



# RAPTOR® CUSTOM GUITARS

CLASSIC LOOKS WITH SPOT-ON TONE!



Columbia Blue 03026670



Black 03018150



Red 03026650



Silverburst 03018180



Marine Green 03026660

# RAPTOR® PLUS GUITARS

25.5" scale; Neck Radius; 12"; Solid body construction with excellent ergonomics and balance; Wide top pole piece single coil pickups for bigger string window with more focus; Tremolo bridge; Peavey six-in-a-line headstock with ergonomic tuner placement and string pull; Master volume and tone controls; 5-way pickup selector, hum cancelling in second and fourth position; Dual action torsion rod; Case not included.





# RAPTOR® PLUS GUITARS



Sunburst 00489440



Black 00489450



Red 03018140



Cherryburst 03018130



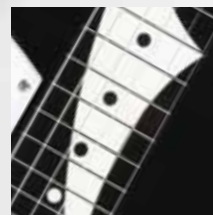
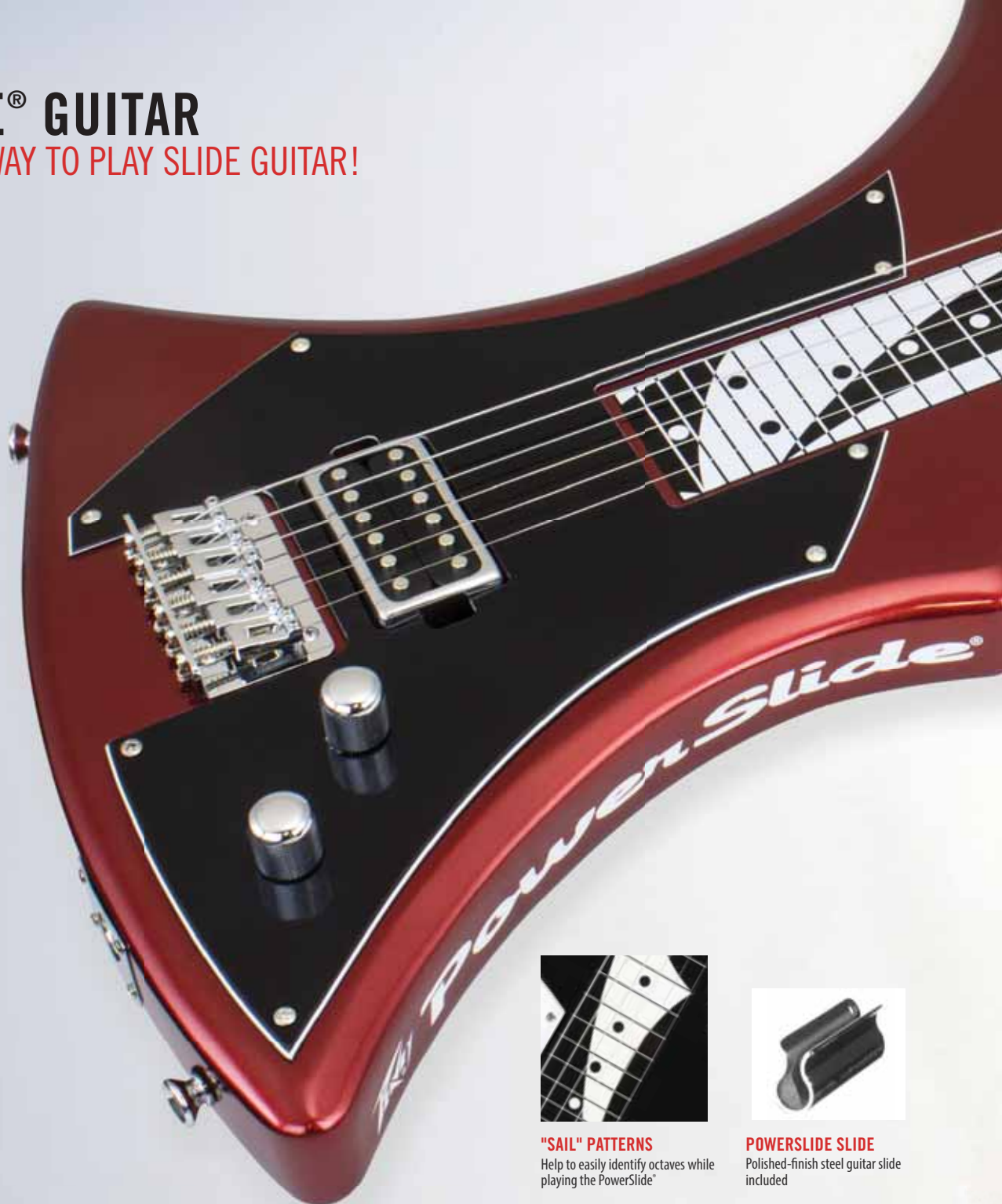
Ivory 03018120

# POWERSLIDE® GUITAR

## A REVOLUTIONARY WAY TO PLAY SLIDE GUITAR!

The PowerSlide® from Peavey is not a traditional lap steel or a resonator, and it's not a conventional steel guitar. This instrument is in response to the huge number of requests we've gotten for a lap-type steel guitar that could be played standing up. The shape of the PowerSlide® is designed to position the playing surface (fingerboard) to the left of the player's body, allowing total access to the playing surface. The unique four-point suspension and the special "Y" strap enable the PowerSlide® to be played either horizontally or vertically – and almost anywhere between.

Revolutionary next-generation slide instrument, ergonomically designed for maximum playability; Patented multipoint strap system allows for multiple vertical and horizontal playing styles; Unique magnet-loaded pickup with patented variable-coil mode control; Radical patented design provides unprecedented neck access in vertical playing position; Ships with .013 - .056 nickel wound strings; Specially designed "Y" strap included, padded bag included, and steel slide included.



### "SAIL" PATTERNS

Help to easily identify octaves while playing the PowerSlide®



### POWERSLIDE SLIDE

Polished-finish steel guitar slide included

**Burgundy**  
00567940

**Ivory**  
00568950

**Black**  
00568340



Many players use finger picks. You can find these special picks at your local music instrument dealer. The technique used is a combination of plucking and strumming while muting unplayed strings



Standard picking works the same as on a regular guitar. Resting your hand on the bridge, it is important to mute the strings you are not playing to prevent feedback at high volume levels.



Moving the slide at an angle across the strings allows for harmonic changes to your major chords. It is often important to mute the strings between the slide and nut to prevent string buzz.

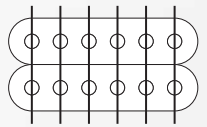


Moving the bar along the fretboard perpendicular to the strings is the same as playing chords. Also notice muting of the strings between the slide and nut.



You can also angle the slide to affect individual strings, leaving the rest open for chording. Note muting the strings between the slide and nut.





### COIL-TAPPING PICKUP

With variable-coil mode control

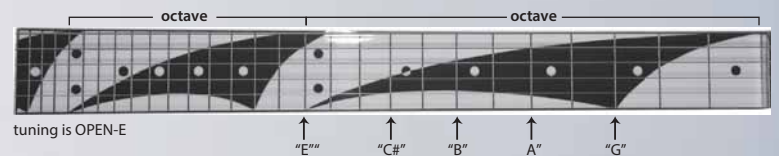


### THE SHAPE

Designed to position the playing surface (fingerboard) to the left of the player's body, allowing total access to the playing surface.



Specially designed "Y" strap included



tuning is OPEN-E

↑ "C#" ↑ "B" ↑ A" ↑ "G"

**INTONATION:** While on a regular guitar you position your fingers between frets to play a note or chord, a slide guitar does not have frets so your slide becomes the fret. This simply means that you must play the note on the fret marker, not between them.



**Playing Positions:** The PowerSlide is a completely new idea in slide guitars. Our unique, patent-pending design allows for multiple playing positions to accommodate an array of playing techniques. Our three-point "Y" strap allows you to play "lap style" while standing up, where the shape offers many other playing options. Now that you have hooked up your strap as shown on page 1, below are several different ways to play your new PowerSlide.



## ROBERT RANDOLPH SIGNATURE POWERSLIDE®

The Robert Randolph signature PowerSlide® incorporates the standard features of the Peavey PowerSlide, along with features that are as unique as the man himself!

Adjustable Belly Rest, added single coil pickup, and upgraded hardware make the Robert Randolph Signature PowerSlide something you have to experience for yourself.

03024390

- *Revolutionary next generation slide instrument, ergonomically designed for maximum playability*
- *Exclusive multi-point strap system allows for multiple vertical and horizontal playing styles*
- *Unique magnet loaded pickup with patented variable coil mode control*
- *Radical patent pending design provides unprecedented neck access in vertical playing position*
- *.013 - .056 nickel wound strings*
- *Specially designed "Y" strap included*
- *Specially designed padded bag included*
- *Steel slide included*



### ADJUSTABLE BELLY REST

Allows users to adjust the distance from the instrument to themselves.

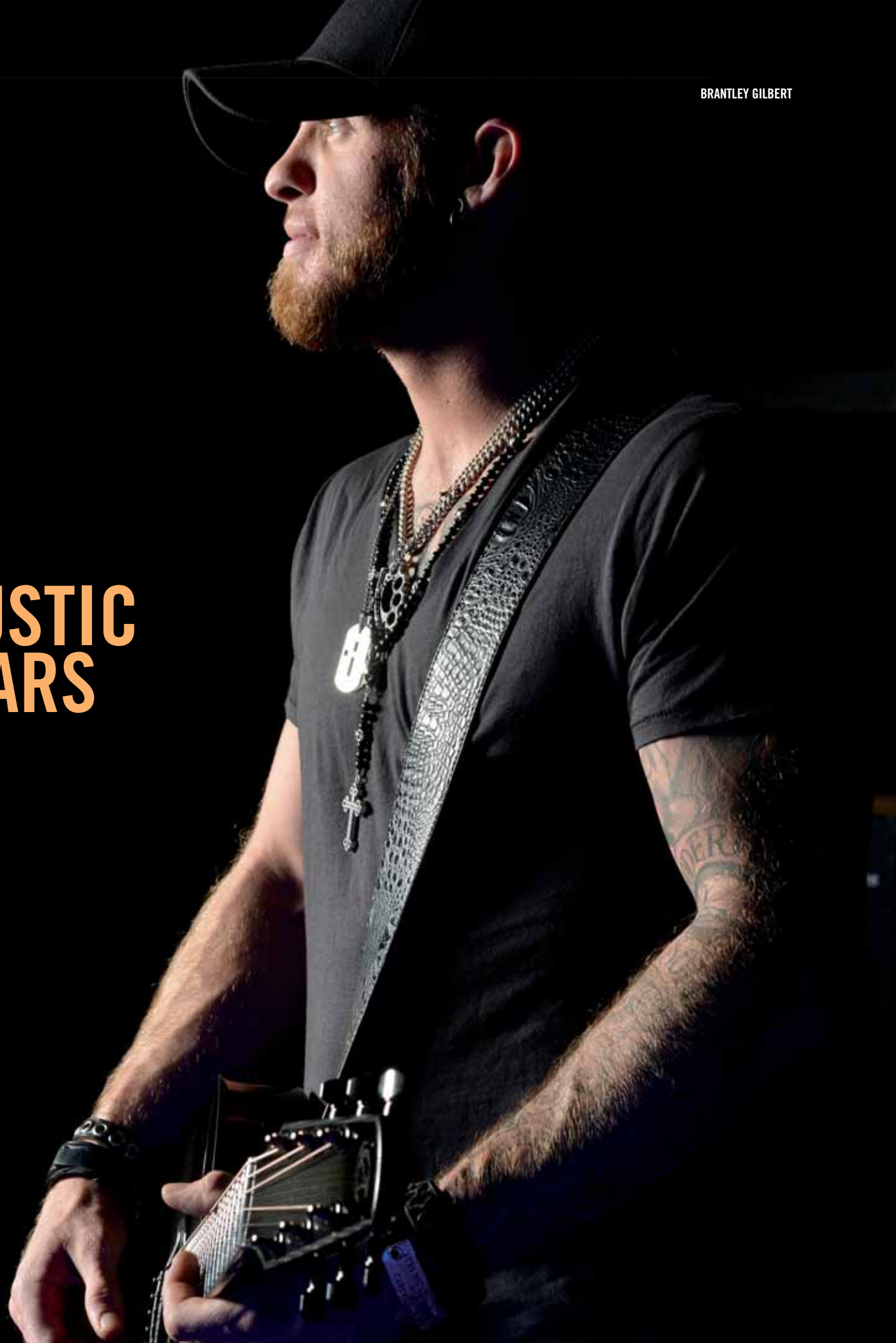




ROBERT RANDOLPH



# ACOUSTIC GUITARS





## Composer Acoustic Guitars

### OFFSET SOUND HOLE FOR IMPROVED VOLUME AND BASS RESPONSE

Peavey's Composer Series is born out of a desire to produce a large, full-bodied tone out of a small-bodied instrument. The Spruce laminate top of the Composer parlor guitar produces a tight and focused sound, due to its offset sound hole and bracing pattern. By moving the sound hole, we are able to place bracing throughout the top in the greatest points of tension (i.e., the space between the bridge and neck). This technique allows for a very rigid instrument that maintains its volume and depth of tone. The Composer also features a wing vent in the hardwood side, which allows more volume to be projected to the musician.

Coupled with its comfortable 12" neck radius, smaller scale length (24 3/4"), and small size, the Peavey Composer will be a guitar you will want to take with you everywhere! Whether camping, traveling, serenading a lover, taking a study break, or enjoying a late-night songwriting session... the Composer is sure to inspire. Try one today!



12" Neck radius and smaller  
scale length (24 3/4")

Offset sound hole and  
unique bracing pattern

Wing Vent



### COMPOSER™ AC 3/4 SCALE CLASSICAL ACOUSTIC

Spruce top with Maple back and sides; white binding; Mahogany neck with rosewood fingerboard; Rosewood bridge; Adjustable truss rod; 23 1/4" scale length; Neck radius flat; 1 13/16" nut width.

03018340

### COMPOSER™ PARLOR

Custom parlor style body design; Natural or sunburst finishes; 23 3/4" scale length; Neck radius 15.75"; Eastern Mahogany neck; Rosewood fingerboard and bridge; Spruce top; Custom binding; Includes backpack style gig bag.

03014420 Composer™ Parlor  
Sunburst

03014170 Composer™ Parlor  
Natural



# DW™ ACOUSTIC SERIES GUITARS

FIND YOUR VOICE. FIND YOUR SONG.

## DW™ 2 FEATURES

Active electronics with built-in tuner; Mahogany back and sides; Spruce laminate top; Gig bag included.

03018240



The Peavey line of DW™ Acoustic Series guitars offers an array of affordable, quality instruments for home, stage, or studio. From the flagship student model DW and DW-1 to the more advanced DW-2, DW-3 and DW-4 CE, there is a DW guitar to fit your playing style. Featuring selected traditional tone woods (Spruce, Mahogany and Rosewood) and modern electronics, the DW Acoustic Series guitar will be a longtime musical companion.



**DW™ FEATURES**

Passive piezo pickup; Sapele back and sides; Spruce laminate top; Gig bag included.

03018230

**DW™ 1 FEATURES**

Passive piezo pickup; Sapele back and sides; Spruce laminate top; Gig bag included.

03025690

**DW™ 3 Features**

Laser-etched custom rosette; Active electronics with built-in tuner, microphone with blend knob; Rosewood back and sides; Solid Spruce top; Light mahogany neck; Hardshell case included.

**DW™ 4-CE FEATURES**

Laser-etched custom rosette; Active electronics with built-in tuner, microphone with blend knob; Cutaway body; Rosewood back and sides; Solid Spruce top; Light mahogany neck; Hardshell case included.

030259500



# BASS GUITARS

JOHN TAYLOR  
DURAN DURAN



# CIRRUS™ BASS GUITARS

The Cirrus bass features quilt maple wings and a maple neck with mahogany stringers, graphite reinforcement and a dual expanding truss rod. Peavey VFL™ active electronics provide +/-10dB of cut and boost, while the rock-solid milled bridge anchors the 35" scale instrument.

The Peavey Powerplate™ is a new innovation for stringed instruments. The Powerplate is a metal plate that is embedded into the back of the headstock, which increases sustain and volume and eliminates any dead spots on the fingerboard. The Powerplate is mounted using the machine heads and increases the amount of string vibration energy that is projected by the instrument.

35" scale with four strings; Neck radius 12"; Milled bridge and gold hardware; Graphite-reinforced neck with dual expanding truss rod; Gloss finish on body and headstock; Gig bag included; Two Peavey VFL™ active pickups and active 3-band EQ with +/- 10dB boost/cut; Quilt Maple wings; Maple neck-through body construction with mahogany stringers.



## Peavey Powerplate™

The Powerplate is a metal plate that is embedded into the back of the headstock which increases sustain and volume. The Powerplate is mounted using the machine heads and increases the amount of string vibration energy that is projected by the instrument.

Cirrus 4 Walnut Gloss 03026750  
Cirrus 4 Red Oak Gloss 03026760  
Cirrus 4 Tiger Eye Gloss 03026770  
Cirrus 5 Bubinga Satin 03026780

Cirrus 5 Walnut Gloss 03026790  
Cirrus 5 Red Oak Gloss 03026800  
Cirrus 5 Tiger Eye Gloss 03026810



Cirrus 4 Bubinga Satin 03026740



Cirrus 4 Walnut 03026750



Cirrus 5 Walnut 03026790



Cirrus 5 Tiger Eye Gloss 03026810







# MILLENNIUM® AC BASS GUITARS





# MILLENNIUM® AC BASS GUITARS

BUILT TO INSPIRE WITH SOLID TONAL RESPONSE,  
COMFORT AND CRAFTSMANSHIP.



## MILLENNIUM® AC

Designed with VFL™ active electronics, the Millennium® AC opens a new world of active-pickup tones for bass enthusiasts. Onboard 18 volt electronics include volume, pickup blend, bass, mid and treble controls, with a Rosewood fretboard, 5-bolt hard rock Maple neck and Basswood body with quilted veneer. Available in 4-string and 5-string models.

Exclusive PowerPlate™ increases sustain; 34" scale, available in 4-string or 5-string models; 21 frets, rosewood fingerboard; Neck Radius for 4-string AC models: 12"; Neck Radius for 5-string AC models: 15.75" 5-bolt neck attachment with hard rock Maple neck; Solid Basswood body, highly figured quilted Maple cap; 2 Peavey USA design VFL™ active humbucking pickups; Active preamp; 18 volt electronics; Volume, pickup blend, bass, mid and treble controls with 12dB boost/cut 19:1 mini die-cast enclosed machine heads; 2-way fully adjustable torsion rod; Individual finger-style bridge; String-thru ferrules.

### Peavey Powerplate™

The Powerplate is a metal plate that is embedded into the back of the headstock which increases sustain and volume. The Powerplate is mounted using the machine heads and increases the amount of string vibration energy that is projected by the instrument.



Millennium 5 AC Vintage Burst Gloss 03026530  
Millennium 5 AC Natural Satin 03026550  
Millennium 5 AC Blue Burst Satin 03026520

Millennium 5 AC Transparent Black Gloss 03026540  
Millennium 4 AC Vintage Burst Gloss 03026370  
Millennium 4 AC Natural Satin 03026410

Millennium 4 AC Blue Burst Satin 03026350  
Millennium 4 AC Transparent Black Gloss 03026390

# MILLENNIUM® BASS GUITARS





# MILLENNIUM® BASS GUITARS

BUILT TO INSPIRE WITH SOLID TONAL RESPONSE,  
COMFORT AND CRAFTSMANSHIP.



**Vintage Burst**  
03026430

**Natural**  
03026450

**Blue Burst**  
03026340

**Transparent Black**  
03026440

## MILLENNIUM®

The Millennium® is a 34" scale, Basswood-bodied bass guitar with an exquisite quilted veneer top. Crafted in 4-string and 5-string models with a pair of J-style passive pickups, a two-way dual expandable truss rod and 5-bolt neck joint, these instruments are every bit as solid as you'd expect from a Millennium.

Exclusive PowerPlate™ increases sustain; 34" scale, available in 4-string or 5-string models; 21 frets; Neck radius for 4-string model: 12"; Neck radius for 5-string model: 15.75"; Hard rock Maple neck with Rosewood fretboard; 2-way fully adjustable torsion rod; Basswood body with highly figured quilt Maple top; 19:1 ratio tuning machines; Two straight single coil pickups, hum canceling when used together; Ergonomic body design with waist cutaway for superior balance and comfort; 2 Volume, 1 master tone controls.

Millennium 4 Vintage Burst Gloss 03026360

Millennium 4 Natural Satin 03026400

Millennium 4 Blue Burst Satin 03026340

Millennium 4 Transparent Black Gloss 03026380

### Peavey Powerplate™

The Powerplate is a metal plate that is embedded into the back of the headstock which increases sustain and volume. The Powerplate is mounted using the machine heads and increases the amount of string vibration energy that is projected by the instrument.



# GRIND™ SERIES







Grind 6 Natural  
0357266

Grind 5 Natural  
03572640

Grind 4 Natural  
03572620

## GRIND™ SERIES

*With Its Beautiful Tones and Craftsmanship,  
It's No Wonder Bass Player Praised the Grind Series.*

Peavey Grind™ basses are crafted from Mahogany with Maple stringers, a Mahogany neck, and an Indonesian Rosewood fingerboard in a neck-thru-body design that rewards your fretwork with solid, resonant tone. It's no wonder why *Bass Player* praised the Grind for its "boutique-style approach" and "rewarding collection of pleasantly gutsy and organic tones."

35" scale, available in 4-, 5-, or 6-string models; 24 jumbo frets; Neck radius for 4-string models: 12"; Neck radius for 5-string models: 15"; Neck radius for 6-string models: 19"; 19:1 ratio tuning machines; Passive humbucking pickups; Mahogany neck with Maple stringers; Neck-thru-body design; Mahogany body wings; Dual action torsion rod.

# MILESTONE® BASS GUITARS

PROFESSIONALS ALL OVER THE WORLD HAVE PLAYED PEAVEY BASSES FOR DECADES. CHECK OUT THE MILESTONE SERIES TO FIND OUT WHY!



Vintage Burst  
03018100



Ivory  
03018090



Natural  
03026680



Black  
03018480

## MILESTONE® SERIES

The Milestone® bass is a rare combination of stunning craftsmanship and intelligent design with an attractive price range. The body design is both classic and elegant, providing an intuitive feel. Try one today and get ready to be amazed!

34" scale; 20 frets; Neck radius: 12"; Exclusive PowerPlate™ increases sustain; Maple neck with Rosewood fretboard; 19:1 ratio tuning machines; chrome hardware; Dual-expanding truss rod; 12" neck radius; Balanced, comfortable body styling with sculpted front and back, improved access neck joint; One split single coil, one straight single coil pickup (hum canceling when used together); Stamped steel bridge; Two volume, master tone controls.

### Peavey Powerplate™

The Powerplate is a metal plate that is embedded into the back of the headstock which increases sustain and volume. The Powerplate is mounted using the machine heads and increases the amount of string vibration energy that is projected by the instrument.







# PV<sup>®</sup> SERIES MIXERS

**EXCELLENT FOR LIVE OR RECORDING APPLICATIONS**

PV<sup>®</sup> series mixing consoles feature Peavey's Silencer™ mic preamps that spec in at an incredible 0.0007% THD, making them perfect for your live or recording applications. Other exclusive features include Mid-Morph EQ that accurately helps improve tone and clarity of vocals, an EQ bypass allows previewing effectiveness, the acclaimed Kosmos<sup>®</sup>, drastically enhances both the low and high ends of the audio spectrum and a guitar circuit that emulates a guitar-amp input and adds EQ specifically for guitar.

A Bluetooth<sup>®</sup>\*\* audio link allows seamless connection to almost any "smart" device. Channel direct-outs allow easy connection to most digital audio workstations (D.A.W.) for recording. In addition, the PV mixers can stream audio directly to a PC via USB and playback MP3 files from a USB memory device. High-quality digital effects and compressors enhance the mix by keeping levels under control. Balanced AUX and Master outputs ensure a clean noise-free signal to your powered speakers or power amplifier.

The PV<sup>®</sup> AT mixers come equipped with Antares<sup>®</sup> Auto-Tune<sup>®</sup> pitch correction, a technology that can help anyone sing in key and is used on professional recordings and live performances throughout the world.







## PV® 10 AT

Rugged, slim, low-profile console design; Convenient tablet cradle; 2 Channels of Antares® Auto-Tune; 4 combination XLR/1/4" low noise mic preamps; Selectable Hi Pass Filter on first 4 inputs; 3-band EQ on all channels; 4 channels of Peavey's exclusive MidMorph® EQ; EQ bypass per channel; 2 channels of built-in compression; Individual channel mutes; Individual Listen/Solo function; LED clip and signal present indication; 4 Channels of direct out; Stereo pan control per channel; Channel 5/6 stereo 1/4", RCA, or 3.5mm input channel; Dual selectable control room outputs; One pre-fader AUX send; KOSMOS® bass and treble enhancement; Main stereo outputs with 1/4" unbalanced and balanced XLR connectors; Precision 60 mm faders on master; High quality master LED meter bridge; Master mic mute; Studio quality headphone output; Equipped with Bluetooth wireless connectivity, Bluetooth 3.0 + EDR, A2DP; On-board USB-A MP3 and WAV playback; Stereo USB-B streaming audio in and out, 16-bit, up to 48kHz sample rates; Built-in Digital Effects with LCD Display; Peavey's exclusive on-board Hi Z guitar input; Global 48V phantom power

**Dimensions (HxWxD):** 2.1875" x 12.75" x 15.1" / 56mm x 324mm x 384mm

**Weight:** 8.26 lbs / 3.75 kg

03612610



## PV® 14 AT

Rugged, slim, low-profile console design; Convenient tablet cradle; 4 Channels of Antares® Auto-Tune; 8 combination XLR/1/4" low noise mic preamps; Selectable Hi Pass Filter on first 8 inputs; 3-band EQ on all channels; 8 channels of Peavey's exclusive MidMorph® EQ; EQ bypass per channel; 4 channels of built-in compression; Individual channel mutes; Individual Listen/Solo function; LED clip and signal present indication; 8 Channels of direct out; Stereo pan control per channel; Channel 9/10 stereo 1/4", RCA, or 3.5mm input channel; Dual selectable control room outputs; One pre-fader AUX send; KOSMOS® bass and treble enhancement; Main stereo outputs with 1/4" unbalanced and balanced XLR connectors; Precision 60 mm faders; High quality master LED meter bridge; Master mic mute; Studio quality headphone output; Equipped with Bluetooth wireless connectivity, Bluetooth 3.0 + EDR, A2DP; On-board USB-A MP3 and WAV playback; Stereo USB-B streaming audio in and out, 16-bit, up to 48kHz sample rates; Built-in Digital Effects with LCD Display; Peavey's exclusive on-board Hi Z guitar input; Global 48V phantom power.

**Dimensions (HxWxD):** 2.1875" x 16.1875" x 17.3" / 56mm x 411mm x 439mm

**Weight:** 12.16 lbs / 5.52 kg 03612630

powered by **Antares® Auto-Tune®**

**Bluetooth®**



Slim, low-profile design

Convenient tablet cradle







## PV® 14 BT

Rugged, slim, low-profile console design; Convenient tablet cradle; 8 combination XLR/1/4" low noise mic preamps; Selectable Hi Pass Filter on first 8 inputs; 3-band EQ on all channels; 8 channels of Peavey's exclusive MidMorph® EQ; EQ bypass per channel; 4 channels of built-in compression; Individual channel mutes; Individual Listen/Solo function; LED clip and signal present indication; 8 Channels of direct out; Stereo pan control per channel; Channel 9/10 stereo 1/4", RCA, or 3.5mm input channel; Dual selectable control room outputs; One pre-fader AUX send; KOSMOS® bass and treble enhancement; Main stereo outputs with 1/4" unbalanced and balanced XLR connectors; Precision 60 mm faders; High quality master LED meter bridge; Master mic mute; Studio quality headphone output; Equipped with Bluetooth wireless connectivity, Bluetooth 3.0 + EDR, A2DP; On-board USB-A MP3 and WAV playback; Stereo USB-B streaming audio in and out, 16-bit, up to 48kHz sample rates; Built-in Digital Effects with LCD Display; Peavey's exclusive on-board Hi Z guitar input; Global 48V phantom power.

**Dimensions (HxWxD):** 2.1875" x 16.1875" x 17.3" / 56mm x 411mm x 439mm  
**Weight:** 12.12 lbs / 5.50 kg 03614200

## PV® 10 BT

Rugged, slim, low-profile console design; Convenient tablet cradle; 4 combination XLR/1/4" low noise mic preamps; Selectable Hi Pass Filter on first 4 inputs; 3-band EQ on all channels; 4 channels of Peavey's exclusive MidMorph® EQ; EQ bypass per channel; 2 channels of built-in compression; Individual channel mutes; Individual Listen/Solo function; LED clip and signal present indication; 4 Channels of direct out; Stereo pan control per channel; Channel 5/6 stereo 1/4", RCA, or 3.5mm input channel; Dual selectable control room outputs; One pre-fader AUX send KOSMOS® bass and treble enhancement; Main stereo outputs with 1/4" unbalanced and balanced XLR connectors; Precision 60 mm faders on master; High quality master LED meter bridge; Master mic mute; Studio quality headphone output; Equipped with Bluetooth wireless connectivity, Bluetooth 3.0 + EDR, A2DP; On-board USB-A MP3 and WAV playback; Stereo USB-B streaming audio in and out, 16-bit, up to 48kHz sample rates; Built-in Digital Effects with LCD Display; Peavey's exclusive on-board Hi Z guitar input; Global 48V phantom power.

**Dimensions (HxWxD):** 2.1875" x 12.75" x 15.1" / 56mm x 324mm x 384mm  
**Weight:** 8.22 lbs / 3.73 kg 03612790



## PV® 6 AT

Rugged, slim, low-profile console design; Convenient tablet cradle; 2 combination XLR/1/4" low noise mic preamps; 3-band EQ on all channels; 2 channels of Peavey's exclusive MidMorph® EQ; EQ bypass per channel; LED clip and signal present indication; 2 Channels of direct out; Stereo pan control per channel; Channel 3/4 stereo 1/4" or 3.5mm input channel; Channel 5/6 stereo 1/4", RCA, or Bluetooth input channel; Dual selectable control room outputs; 1/4" main stereo outputs; High quality master LED meter bridge; Built-in master compression; Studio quality headphone output; Equipped with Bluetooth wireless connectivity, Bluetooth 3.0 + EDR, A2DP; Stereo USB-B streaming audio in and out, 16-bit, up to 48kHz sample rates; Built-in Digital Effects; Peavey's exclusive on-board Hi Z guitar input; Global 48V phantom power.

**Dimensions (HxWxD):** 2.1875" x 7.25" x 11.4" / 56mm x 184mm x 290mm  
**Weight:** 4.06 lbs / 1.84 kg 03612590

## PV® 6

Rugged, slim, low-profile console design; Convenient tablet cradle; 2 combination XLR/1/4" low noise mic preamps; 3-band EQ on all channels; 2 channels of Peavey's exclusive MidMorph® EQ; EQ bypass per channel; LED clip and signal present indication; 2 Channels of direct out; Stereo pan control per channel; Channel 3/4 stereo 1/4" or 3.5mm input channel; Channel 5/6 stereo 1/4" or RCA input channel; Dual selectable control room outputs; 1/4" main stereo outputs; High quality master LED meter bridge; Built-in master compression; Studio quality headphone output; Stereo USB-B streaming audio in and out, 16-bit, up to 48kHz sample rates; Peavey's exclusive on-board Hi Z guitar input; Global 48V phantom power.

**Dimensions (HxWxD):** 2.1875" x 7.25" x 11.4" / 56mm x 184mm x 290mm  
**Weight:** 3.99 lbs / 1.81 kg 03612570



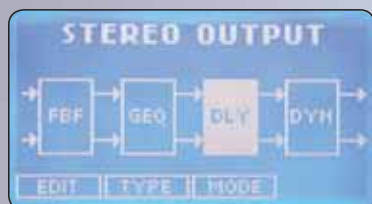






# FX™ 2 ANALOG/DIGITAL HYBRID MIXERS

*Quiet, Transparent, And Reliable, With On-board  
USB Recording — Be Confident!*



Built-in digital output processing includes Feedback Ferret®, GEO / PEQ, delay line and limiting.



GEQ: Dual 28-band digital graphic EQs can be saved to presets.



PEQ: Dual 5-band digital parametric EQ for custom control.



MP3: Record directly to plug-in USB stick — no outboard gear needed!

The FX™2 mixers pack massive processing power and Peavey-exclusive technology to enhance live sound reproduction and project studio recording. Featuring Silencer™ mic preamps which allow very high gain with low noise and distortion for crystal-clear signal reproduction. In addition the four pre-fader auxes per channel provide four monitor mixes, while the two post-fader auxes are ideal for adding effects (built-in or outboard).

These mixers include dual DSP engines that allow multiple simultaneous effects assignable to any channel via aux 5/6. On-board effects include reverb, reverb enhanced, delay, compression, expander, de-esser, chorus, flanger, tube emulator, vocal enhancer and gate. Connect up to two processors together on each of the two available effects windows. The digital output processing section includes Feedback Ferret®, dual 5-band Parametric EQ or dual 28-band Graphic EQs, digital delay lines, and dynamics / limiters. The output section can be configured for Stereo, Dual Mono or Subwoofer mode with a built-in electronic crossover.

Dual USB 2.0 ports allow streaming of digital audio directly to a computer or recording to a memory stick, using the exclusive built-in MP3 compression. You can record rehearsals, songwriting sessions or live performances directly to a USB stick and then transfer them to your computer to burn CDs or to transmit electronically. You can also insert a memory stick to playback audio files for use between sets.

**High-power dual DSP engine with digital effects and output processing including Feedback Ferret®, 28-band GEQ / 5-band PEQ, delay and limiter; USB 2.0 "A" connection to record directly to or playback from memory stick; USB 2.0 "B" connection for streaming digital out; 3-band EQ with sweepable mid-frequency and variable low cut filters; Two stereo channels with dual mic / line inputs; 48-volt phantom power; Six Aux sends; Four subgroups; 100mm faders; "High efficiency" switching power supply; Silencer™ mic preamp XLR input.**

## FX2 32

**Dimensions (HxWxD):** 7.75" x 32.5" x 18.8" / 197mm x 825.5mm x 477.5mm

**Weight:** 30lbs / 13.6kg

## FX2 24

**Dimensions (HxWxD):** 7.25" x 24.4" x 18.8" / 197mm x 619.8mm x 477.5mm

**Weight:** 25lbs / 11.3kg

## FX2 16

**Dimensions (HxWxD):** 7.75" x 19" x 18" / 197mm x 482.6mm x 457.2mm

**Weight:** 24lbs / 10.9kg

**FX2 32** 03601000 **FX2 24** 03600970 **FX2 16** 03600940



# XR<sup>®</sup> S POWERED MIXER

**FROM THE COMPANY THAT INVENTED THE MODERN TOP BOX MIXER**

*The Completely Redesigned XR*



1,000 WATTS OF POWER!

The <sup>®</sup>S powered mixer incorporates an 8-channel mixer and 1,000 Watts of real power (1,500 Watts peak) into a feature-rich, conveniently sized package. This highly portable mixer is ideal for use in small- to medium-sized venues.

The XR<sup>®</sup> S comes equipped with on-board digital effects and cutting-edge features that are only available from Peavey, such as MidMorph<sup>®</sup> and FLS<sup>®</sup> – Peavey's exclusive Feedback Locating System<sup>®</sup>. The mixer also includes Bluetooth<sup>®</sup> wireless connectivity for audio playback from any Bluetooth-equipped smart device or USB "jump drive."

Featuring the rock-solid construction for which Peavey is known, plus a dual 9-band graphic EQ and a monitor send, the XR<sup>®</sup> S is the perfect sound reinforcement solution for audio professionals needing a highly reliable mixer in an economically sized package.



1,000 Watts RMS 1,500 Watts peak; Digital effects; MidMorph<sup>®</sup> EQ; Dual 9-Band Main/Mon Graphic EQ; FLS<sup>®</sup> exclusive Feedback detection circuit; 3-Band EQ per channel; USB MP3 Player; 8 Combination XLR/1/4" inputs; Footswitchable Master Mic Mute; Bluetooth<sup>®</sup> capability; Subwoofer line output; Effect To Monitor Return; Monitor Send; Input pads; Analog record output capability; Front panel Effects Defeat; Footswitchable Effects Defeat; Individual signal and Clip Detection LEDs; Line Level Monitor Output; Four twist lock outputs; Optional rack mount kit available; Kosmos<sup>®</sup>-C Bass enhancement; Selectable Main/Main or Main/Monitor power amp modes.

Dimensions (HxWxD): 7.75" x 15" x 9.5" / 197mm x 381mm x 241.3mm;  
Weight: 13.6lbs / 6.2kg 03612230





## XR® AT POWERED MIXER

Featuring The World Famous

Antares® Auto-Tune® Pitch Correction Technology

### 1,000 WATTS OF POWER!

The XR®-AT powered mixer incorporates a 9-channel mixer and 1,000 Watts of power (1,500 Watts peak) into a unique, portable design. Plus, for the first time ever, the mixer includes the world famous Antares Auto-Tune pitch correction technology. This technology can help anyone sing in key and is used on professional recordings and live performances throughout the world.

Ideal for use in small- to medium-sized venues, the feature-packed XR-AT comes equipped with on-board digital effects and cutting-edge features that are only available from Peavey, such as MidMorph® and FLS® Peavey's exclusive Feedback Locating System®. The mixer also includes Bluetooth® wireless connectivity for audio playback from any Bluetooth-equipped smart device or USB "jump drive."

Seven channels of compression allow users to dial in the perfect level regardless of the source, making the XR-AT highly adaptable in any live setting. Dual 9-band graphic EQs with FLS, monitor send and selectable EQ round out the features on this game-changing sound reinforcement solution.

1,000 Watts RMS, 1,500 Watts peak power; Digital effects; Exclusive MidMorph® EQ; Dual 9-band main graphic EQs; FLS® exclusive Feedback detection circuit; 7 channels with individual compression capability; Antares® Auto-Tune®; USB MP3 player; 8 combination XLR / 1/4" inputs; Assignable stereo power amp; Kosmos® C low-frequency enhancement; Bluetooth® capability; Subwoofer line output; Effect To Monitor

Return control; Monitor Send on mic channels; Input pads; Analog record output capability.

Dimensions (HxWxD): 9.25" x 18.375" x 9.25" / 235mm x 466.7mm x 235mm

Weight: 15.6lbs / 7kg 03612200

Antares and Auto-Tune® are registered trademarks of Antares Audio Technologies.



## XR° 1212 AND XR° 1220 ARE THE PERFECT CONSOLE-STYLE POWERED MIXERS, LOADED WITH TOOLS FOR PERFECTING LIVE SOUND REINFORCEMENT



Rack Ears Included



### XR° 1212

Designed with 12 reference-quality XLR microphone input channels and five operation modes, the console-style XR° 1212 is a versatile powered mixer. Two power amps rated at 600W each make it easy to configure for Left & Right; Left & Right with Subwoofer (including fourth-order 100Hz crossover); Main & Monitor; Main & Monitor with Subwoofer; or Monitor 1 & Monitor 2.

Dimensions (HxWxD): 5.5" x 16.5" x 17" / 140mm x 419mm x 432mm

Weight: 22.05lbs / 10kg 03513720



### XR° 1220

Our largest powered console! Five operation modes (same as above) and dual 600-watt power amps – plus a full 20 reference-quality XLR microphone input channels – make this a must-have for live sound productions. Packed with features like the XR° 1212, including two monitor sends; 4-band EQ on every channel; auto graphic EQ; digital effects; and much more.

Dimensions (HxWxD): 5.5" x 24" x 17" / 140mm x 610mm x 432mm

Weight: 25.57lbs / 10kg 03513760

IPR™ lightweight Class D power amps make these mixers very portable!

### XR° 1200 RTA

The built-in Real-Time Analyzer analyzes the room and sets your EQ curves automatically when a microphone is connected.



### XR° 1200 MASTER SECTION

The XR° 1212 / 1220 master section features separate digital 9-band graphic EQ's on both output amplifiers, Peavey's exclusive Feedback Ferret® digital feedback elimination and a digital effects section that includes a range of reverbs, delays and chorus with preset storage and dedicated effect return fader. The dual auto-EQ and Feedback Ferret can be assigned to two outputs – left and right, main and monitor, and monitor 1 and 2.





PV 5300

## PV®5300

The Peavey PV® 5300 200-watt powered mixer provides up to four combination XLR and 1/4" inputs using premium Peavey mic preamps for crystal-clear audio reproduction. The PV 5300 uses exclusive features to accurately help improve tone and clarity of vocals. Our exclusive and revolutionary FLS® Feedback Locating System quickly and easily identifies and removes feedback. Footswitchable, built-in reverb complements the already feature-packed unit. Connect almost anything to this versatile mixer via the onboard 1/4", RCA and 1/8" mini jacks.

200 watts; 5 input channels; Footswitchable effects defeat; RCA, 1/8" media input; Stereo power section; RCA record outputs; LED meter bridge; Power amp subsonic filtering; FLS® Feedback Locating System; On-board digital reverb; Combination XLR and 1/4" input jack; 5-Band Graphic EQ with FLS; Master Mute for channels 1-4.

Dimensions (HxWxD): 9" x 14" x 9" / 228.6mm x 355.6mm x 228.6mm  
Weight: 14lbs / 6.35kg  
03601820



PV i 6500



PV i 8500

## PV® i 6500 & PV® i 8500

The PV® i Series mixers carry on a long-standing Peavey tradition of providing amazing performance and value to countless musicians. The PVi 6500 and PVi 8500 are portable, powered top-box mixers that feature Bluetooth® streaming audio, SD card and USB MP3 Player for spoken-word, performance, and prerecorded audio reinforcement.

The Peavey® PV® i 6500 is a revolutionary all-in-one powered mixer. It has everything a musician needs, providing up to six simultaneous combination XLR and 1/4" inputs using Peavey's award winning Silencer® mic preamps, and 400 watts of power for crystal-clear audio reproduction. The Peavey PVi 6500 uses exclusive features such as Mid Morph EQ to accurately help improve tone and clarity of vocals. Feedback is quickly and easily identified and removed with Peavey's 9-band graphic EQ combined with our revolutionary FLS® Feedback Locating System.

The PVi 6500 is equipped with Kosmos®, which drastically enhances both the low and high ends of the audio spectrum and is exclusive Peavey technology. Footswitchable built in 24-bit digital effects complement the already feature-packed unit by allowing the user to select multiple varieties of reverb and delay. Connect almost anything to this versatile mixer via the onboard 1/4", RCA, and 1/8" mini jacks.

*The Peavey PVi 8500 contains all the benefits and features of the PVi 6500, but with a total of eight channels.*

400 watts; FLS® Feedback Locating System; MidMorph® EQ provides users with a unique way to improve speech and vocal clarity by selecting critical frequencies when boosting and cutting the midrange EQ; On-board 24-bit digital effects allow the user a variety of reverb and delay effects; Combination XLR and 1/4" input jacks; Selectable 9-Band Graphic EQ for Mains or Monitors; Kosmos®-C exclusive Peavey technology allows the user to uniquely tailor and emphasize the low or high frequency range; Master Mute silences all mic input channels with the touch of a button, incredibly handy for breaks between sets; Phantom Power for condenser microphones; Footswitchable effects defeat allows the user to turn off the effects remotely; Bluetooth® streaming audio; RCA, 1/8" media input for connecting various input devices such as CD and MP3 players; Power section with dual independent controls allows independent volume control over the two power amps; Users can use one amplifier to control a monitor or remote speaker; RCA Record outputs allow the user to connect an external device to record a performance; LED Meter bridge allows the user to easily identify the signal level of any channel or of the main signal level, ensuring unity gain without clipping through the signal path; Power amp subsonic filtering removes inaudible power-robbing frequencies from the system, providing more usable headroom.

PVi 6500 03601840

Dimensions (HxWxD):

10.25" x 16.5" x 10.75" / 260.35mm x 419.1mm x 273.05mm

Weight: 20.4lbs / 9.253kg

PVi 8500 03601860

Dimensions (HxWxD):

11.25" x 19.375" x 10.75" / 298.45mm x 492.125mm x 273.05mm

Weight: 22.2lbs / 10.069kg



# RBN™ SERIES POWERED ENCLOSURES





**The RBN™ 112 Powered Enclosure** boasts a 1,500-watt power amp which combines best-in-class audio quality with a world-class ribbon driver and advanced 96K DSP to deliver unmatched, crystal-clear sound. All with Peavey's legendary reliability.

**Proprietary 120mm True Ribbon High Frequency Driver** provides the excellent transient response and exceptional clarity that the audience hears and appreciates. The true ribbon tweeter construction results in a diaphragm moving mass that is about 1/10 that of a typical 2" diameter voice coil compression driver.

**12" NEO Scorpion® Loudspeaker Dual push/pull 2.5" voice coils** allow greater power handling with lower distortion and deliver overall improved performance over conventional loudspeaker designs. Gold-plated terminals and **field replaceable baskets** offer reliability and convenience.

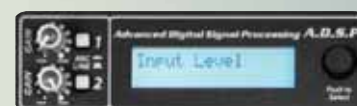


**Symmetrical Push-pull Neodymium Magnet Structure** eliminates classic compressor driver harshness at high levels while providing astonishing micro-dynamics and detail.

**Ram Air Cooling™ Design** radiates heat away from the voice coil and speaker cone for improved performance.



**1,500 Watt Power Amp**  
Competitors claim 1,000 watts while only delivering a fraction of the power. Peavey's exclusive and purpose built power amplifier provides **REAL** rated power for unmatched professional sound reinforcement applications.



**Advanced 96K DSP** The ADC and DAC Sampling frequency is 96 kHz, which provides a more accurate and faithful rendition of the material, with wider bandwidth and less time smear.



RBN™ 112

## RBN™ 110/RBN™ 112

Two-way, bi-amplified, optimized loudspeaker system; Two channel XLR/1/4" combination inputs; Mic/line level selection; 1,500 Watts RBN 112 and 1,050 Watts RBN 110 peak power output; On-board advanced digital signal processing; Processed-thru output enables DSP to be used with external subwoofer; Direct-thru output with combine function; Dual voice coil neodymium Scorpion® woofer with field replaceable basket assembly (RBN 112); Proprietary 120mm true ribbon high frequency driver on low-coloration wave guide; Digital compression/limiting; 9-band EQ; Bass enhancement; Delay 0-150ms; Power amp VU meter with LCD display; Internal temperature monitor; Auto-off power/power down; Setup Wizard for easy configuration; Program EQ presets; Side and top handles; Ultra-braced molded enclosure; Multiple side and top fly points.

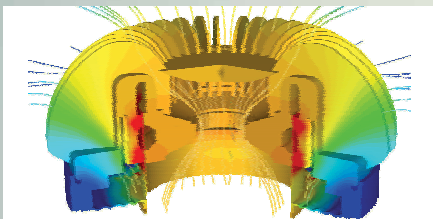


RBN™ 110



# COMPONENTS MATTER!

Highest Quality  
Components  
Equal Highest  
Quality Audio.



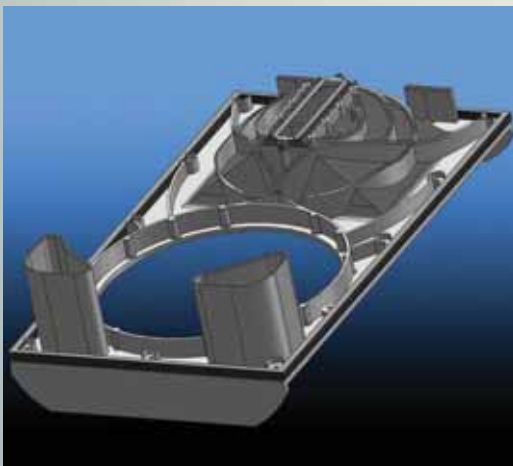
The RBN™112 enclosure features our exclusive Ram Air Cooling™ design, a dissipation process that radiates heat away from the voice coil and speaker cone. RAC works in conjunction with our neodymium-loaded, field-replaceable 12" NEO Scorpion® loudspeaker with

dual push/pull 2.5" voice coils to allow greater power handling with lower distortion, and deliver overall improved performance over conventional loudspeaker designs. Gold-plated contacts.

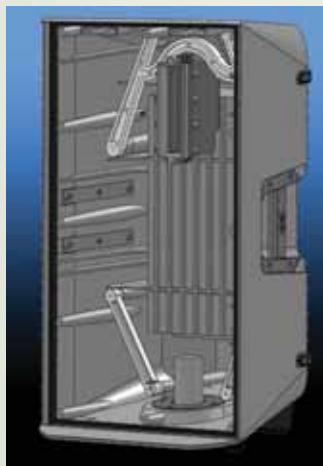
Proprietary 120mm true ribbon high frequency driver on low-coloration wave guide. The true ribbon tweeter construction results in a diaphragm moving mass that is about 1/10 that of a typical 2" diameter voice coil compression driver. This provides the excellent transient response and exceptional clarity that the audience hears.

Direct drive of the diaphragm with the input signal – the voice coil IS the moving speaker surface! No break-up modes, as the diaphragm is driven uniformly over its entire surface.

Symmetrical push-pull Neodymium magnet structure, which provides outstanding linearity and low even-order distortion performance, resulting in a complete freedom from the classic compression driver honk and harshness at high levels, while providing astonishing micro-dynamics and detail.



**Solid construction and innovative bracing eliminates enclosure noise while producing crystal clear audio.**



**DSP Configuration Wizard for easy setup on RBN 112 .**

Bass Enhancement 3	150ms 168.9ft / 51.5m	Program EQ Rock	Use RBN112 with Subwoofer? Yes	RBN112 Location Floor Monitor
-----------------------	--------------------------	--------------------	-----------------------------------	----------------------------------

**Internal presets built into the DSP allow users to quickly select the speaker's application or orientation via the LCD on the rear of the enclosure.**



# RBN™ SERIES POWERED ENCLOSURES



**RBN™ 215 Subwoofer**



**RBN™ 118 Subwoofer**

## RBN™ 215/RBN™ 118 POWERED SUBWOOFERS

Two channel XLR/1/4" combination inputs; Mic/line level selection; 2,000 Watts total peak power; On-board advanced digital signal processing; Processed Thru output enables DSP to be used with external speaker cabinet; Direct-Thru output with combine function; Dual 15" woofers (RBN 215) Single 18" woofer (RBN 118); Digital compression/limiting; 9-band EQ; Bass enhancement; Delay 0-150ms; Assignable crossover; Power amp VU meter with LCD display; Internal temperature monitor with variable speed cooling fan; Auto power off; Setup Wizard for easy configuration; Heavy-duty locking casters; Ultra-braced cabinet assembly; Power amp forced air cooling for maximum reliability; Ground lift; Pole mount; Heavy-duty steel perforated grille.

### **RBN 215 Subwoofer**

#### **Dimensions (HxWxD):**

32.88" x 22.07" x 24.75"

835.2mm x 560.6mm x 629mm

(not including wheels, 4.06" / 103mm deep)

**Weight** 142lbs / 64.4kg 03612720

### **RBN 118 Subwoofer**

#### **Dimensions (HxWxD):**

29.84" x 22.07" x 24.75"

758mm x 560.6mm x 628.65mm

(not including wheels, 4.06" / 103mm deep)

**Weight** 106lbs / 48kg 03614700



# PVX™<sub>p</sub> POWERED ENCLOSURES

*Real Power! Higher SPL!*

SPL (sound pressure level) is also commonly referred to as efficiency and sensitivity. This parameter is a measure representing a speaker's loudness. A higher SPL equates to a louder speaker.

The PVX™<sub>p</sub> powered enclosures deliver higher SPL while providing high-fidelity and impressive power using Peavey's legendary speaker and amp technology. With compact size, solid construction, multiple flying and mounting options, ample power and features, these will be your "go to" speakers for sound reinforcement.

*Sound Pressure Level*

*The Real Measure of a Powered Speaker!*



Compare to other “1,000 watt” speakers  
and you'll know why sound is our  
strength!

## PVX™P 15/12/10

128dB Peak SPL PVXp 15 & 12 • 122dB Peak SPL PVXp 10

Two-way bi-amped sound reinforcement enclosure; High-performance Peavey woofer with 2.3" voice coil; RX™14 titanium compression driver; Ultra-reliable fan-cooled power amps with DDT™; Exclusive Quadratic Throat Waveguide™ technology, 100° x 50° coverage; Asymmetrical horn aims the sound down to 10° – at the audience, not over their heads; LED signal present and DDT™ active indicator; Multiple cabinet fly points; Pole mountable cabinet; Angled side for use as a monitor when required; Combination 1/4" and XLR input; XLR and 1/4" through outputs; Molded in cabinet handle.

### PVXp 10

#### Dimensions (HxWxD):

20" x 12.69" x 11.06" /  
508mm x 322.3mm x 281mm

**Weight:** 28lbs / 12.7kg

03611380

### PVXp 12

#### Dimensions (HxWxD):

24.5" x 16.1" x 15" / 622.3mm  
x 409mm x 381mm

**Weight:** 43lbs / 19.5kg

03602450

### PVXp 15

#### Dimensions (HxWxD):

28.25" x 18.9" x 18.71" /  
717.6mm x 480mm x

475.2mm

**Weight:** 51lbs / 23.13kg

03602470

## PVX™P SUBWOOFER

128dB Peak SPL

15" Heavy-duty woofer; Internal line level low-pass / high-pass crossover network; Fully adjustable Kosmos™ C for increased bass impact; Power amp has forced air cooling for maximum reliability; XLR / 1/4" combo jack input; T-nut woofer mounting; Large heavy-duty locking casters; Threaded pole for top speaker mount; Perforated steel grille; Steel handles.

**Dimensions (HxWxD):** 24.25" x 16.75" x 23" / 616mm x 425.5mm x 584.2mm

**Weight:** 76lbs / 34.5kg

03611330



### Functionality with Flyability

#### Top, bottom and right side flying point inserts

Five sets of flying/mounting points, two on the top, two on the bottom, and one on the side, with a total of 16 cabinet inserts, provide for the ultimate in installation flexibility.



# DARK MATTER™ SERIES ENCLOSURES

Programmable EQ Settings • Variable Delay Adjustment • Variable Crossover  
• Polarity Selection • 32 Factory and User Presets

Thanks to their advanced DSP-equipped power section, the high-S.P.L. Dark Matter™ enclosures deliver best-in-class performance! The Dark Matter enclosures feature modern styling and come in four available models: DM™ 112, DM™ 115, DM™ 118 SUB and DM™ 115 SUB. These enclosures are perfect for band, DJ or other musical applications.

## DM™ 112 /DM™ 115

127dB Peak SPL

Two-way bi-amplified analog amp-powered speaker system; Heavy-duty woofer; DX™14 compression driver, with 1.4" titanium diaphragm; Fan cooled for maximum reliability; On-board advanced DSP with LCD; Peavey exclusive Quadratic Throat Waveguide™ technology, 110 by 80 degree coverage; Input is via a combo female XLR and 1/4" TRS phone jack with balanced input; A Mic/Line switch provides for two different gain settings; Thru output is via a male XLR jack; Rugged plastic injection-molded trapezoidal enclosure; Cabinet has rear corner angled sides for floor monitor use; Full-coverage perforated metal grilles, with powder coat finish; Pole mount molded-in for 1 3/8" diameter poles.

**DM 112**  
**Dimensions (HxWxD):**  
25.3" x 14.63" x 14.38" / 643mm x 371.6mm x 365.25mm  
**Weight:** 37lbs / 16.78kg 03614480

**DM 115**  
**Dimensions (HxWxD):**  
28.3" x 16.75" x 15.06" / 719mm x 425.5mm x 382.6mm  
**Weight:** 42lbs / 19kg 03614530

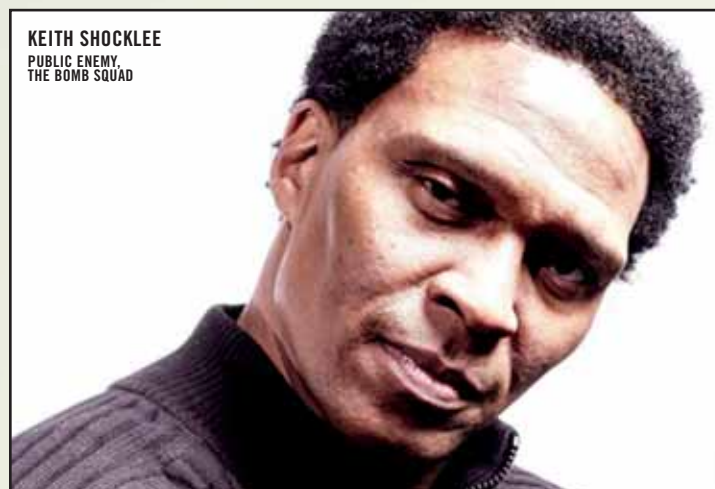
## DM™ 115 SUB/DM™ 118 SUB

127dB Peak SPL DM 115 sub • 125dB Peak SPL DM 118 sub

Vented bass powered subwoofer enclosure; Heavy Duty Woofer; Power amp has forced air cooling for maximum reliability; Internal line level low-pass/high-pass crossover network; Fully adjustable Kosmos™ C for increased bass impact; XLR/1/4" combo jack input; Two High-Pass XLR outputs, One Full Range Thru XLR output; Phase Switch for phase reversal of subwoofer; Ground Lift for lifting cable shield from ground; Full-coverage heavy-duty perforated metal grille; Steel handles; Compact dimensions for a 15" woofer based sub; Threaded Pole Mount with speaker pole included.

**DM 115 SUB**  
**Dimensions (HxWxD):**  
24.25" x 16.75" x 23" / 616mm x 425.5mm x 584.2mm  
**Weight:** 71lbs / 32.2kg 03614580

**DM 118 SUB**  
**Dimensions (HxWxD):**  
25.4" x 20" by 23.12 / 645mm x 580mm 587mm  
**Weight:** 97lbs / 44.1kg 03614760



**KEITH SHOCKLEE**  
PUBLIC ENEMY,  
THE BOMB SQUAD



**DJ PONFETTI**  
PHOTOGRAPHER CHRIS MANGIONE



### LCD DISPLAY FOR SELECTION OF DSP CONTROL PARAMETERS

The LCD display and associated selector knob (push to select) allow selection of various parameters of operation for the DSP based EQ.

#### THIS INCLUDES:

**Bass & Treble control access, plus EQ Presets for different applications or speaker position / location**  
These provide a highly flexible method of configuring the powered speaker system for a specific and particular use, without a lot of time and effort on the part of the user. Good performance and sound are much easier to achieve, with little or no need for additional EQ at the mixer board.







# PV<sup>®</sup> SERIES POWERED ENCLOSURES

*Power Up Your Event With PV<sup>®</sup> Powered Enclosures*

Hartley Peavey founded Peavey Electronics on the principle of making high-quality, professional gear that sounds great but won't break the bank. We've been honing that art since 1965, and no sound reinforcement line combines performance and value like our PV<sup>®</sup> Series. A full range of enclosures, subwoofers and monitors, the PV Series stacks up with heavy-duty loudspeakers, titanium compression drivers and impressive high-power handling. The PV<sup>®</sup> 215, PV<sup>®</sup> 115 and PV<sup>®</sup> 112 are loaded with constant-directivity horns that produce clean highs and targeted sound coverage, and range between 800 and 1,400 watts peak power handling.

When it's time to get the party started, PV Series subwoofers are ready to rumble. The passive PV<sup>®</sup> 118 sub has an optimized internal low-pass crossover network and ranges from 40Hz to 180Hz with 400 watts program power handling, while the active PV<sup>®</sup> 118D features a built-in class-D amp that drives an 18" woofer with 300 watts total power.

No sound-reinforcement line would be complete without monitors. The PV 15PM is an active, 200-watt monitoring system that uses a lightweight, efficient class-D power section.



PV<sup>®</sup> 215D Powered Enclosure

PV<sup>®</sup> 115D Powered Enclosure

PV<sup>®</sup> 115D Powered Enclosure

PV<sup>®</sup> Powered 118D Subwoofers

PV<sup>®</sup> 15PM Powered Monitor

PV<sup>®</sup> 15PM Powered Monitor



## PV® 115D POWERED ENCLOSURE

The lightweight and portable PV 115D powered enclosure delivers high fidelity and impressive power using Peavey's legendary speaker and power amp technology. 400 watts; 800 watts total peak power when driving an external passive enclosure; DDT™ speaker protection; RX™14 titanium compression driver; 15" high-performance woofer with 2.375" voice coil; Pole-mountable cabinet; LED signal present and DDT™ activation indicators; Combination 1/4" and XLR input; XLR and 1/4" through outputs. The PV 115D is housed in a durable wooden, carpet-covered enclosure.

### Dimensions (HxWxD):

F 32.25" x 18.83" x 14.75" / 819mm x 478mm x 375mm

R 32.25" x 11.25" x 14.75" / 819mm x 286mm x 375mm

**Weight:** 56lbs / 25.4kg

03602020

## PV® 215D POWERED ENCLOSURE

Amazing power in a quasi-three-way enclosure! The lightweight and portable PV 215D powered enclosure delivers high fidelity and impressive power using Peavey's legendary speaker and power amp technology. 800 watts peak available power; DDT™ speaker protection; RX™14 titanium compression driver; 15" high-performance woofer with 2.375" voice coil; Pole-mountable cabinet; LED signal present and DDT™ activation indicators; Combination 1/4" and XLR input; XLR and 1/4" through outputs. The PV 215D is housed in a durable wooden, carpet-covered enclosure.

### Dimensions (HxWxD):

F 48.50" x 18.88" x 14.75" / 1232mm x 480mm x 375mm

R 48.5" x 11.25" x 14.75" / 1232mm x 286mm x 375mm

**Weight:** 79lbs / 35.9kg

03602050

## PV® POWERED 118D SUBWOOFER

Designed to complement the PV® family of enclosures, this ported subwoofer utilizes an 18" heavy duty woofer with a 3" voice coil and 65oz. magnet. A built-in 120Hz crossover and bass contour circuit make this 300-watt max sub a versatile addition to any sound system; Will accept line-level or powered input.

**Dimensions (HxWxD):** 27" x 21.88" x 19.63" / 686mm x 556mm x 499mm

**Weight:** 76lbs / 34.5kg

03600420

## PV® 15PM POWERED MONITOR

The PV 15PM is a two-way powered monitor system engineered with a bi-amplified power section that drives a 15" woofer with a 2.375" voice coil and a 1.4" voice coil titanium diaphragm 14XT™ compression driver with 200 watts total power.

**Dimensions (HxWxD):** 16.13" x 25.38" x 18" / 410mm x 645mm x 457mm

**Weight:** 47lbs / 21.4kg

03600380

## PV® 115D

# POWER TO SPARE!

800 Total Watts\* of Peavey Power

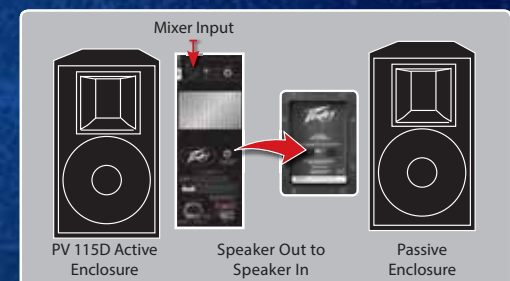
**400 WATTS** of Extra **POWER** for Any Passive Enclosure

Use the **SPEAKER OUT** to **POWER** any Passive PA Speaker, Subwoofer, or Monitor.

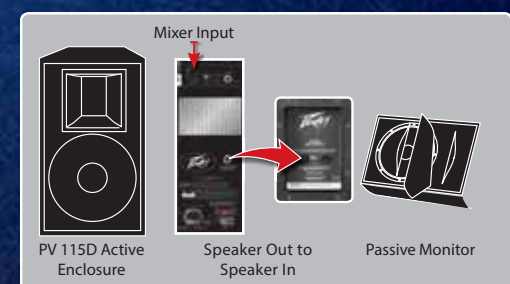
\*@ 4 Ohms while connected to passive enclosure

Use your PV® 115D  
Powered enclosure to:

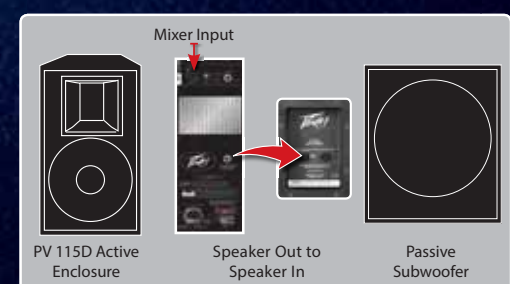
### Power a Passive PA Speaker



### Power a Passive Monitor



### Power a Passive Subwoofer





# VERSARRAY™ SERIES ENCLOSURES





## Innovations For The Most Challenging Live Music Productions

The Peavey Versarray™ features planar ribbon drivers, neodymium-loaded woofers and exclusive angle adjustment technology to set a new benchmark for high fidelity, high-level sound reinforcement.

A veteran of major concert tours such as Ozzfest, Tim McGraw and the Rockstar® Mayhem Festival, the Versarray line array offers extreme versatility in the most demanding sound-reinforcement applications.

The Versarray system's exclusive bracket-and-pin flying hardware allows maximum articulation from each enclosure. This highly flexible rigging system gives users a multitude of array possibilities, from traditional flying to ground stacking or pole mounting. Versarray accessory packages include everything you need to achieve perfect sound, from locking pins and "fly bars" to a crankable speaker lift.

### VERSARRAY™ 112 MK II



The Versarray™ 112 MK II ribbon-driver line array utilizes a high-performance, 12" Black Widow® woofer featuring a dual 4" flat wound voice coil with a neodymium magnet structure in a 13-ply Baltic birch enclosure. The Versarray 112 MK II offers extreme versatility and performance in modular coverage of small-to medium-sized venues and is intended for use with Versarray 118 or 218 subs. SoundGuard™, Peavey's proprietary protection circuitry, provides long-and medium-term driver overload protection without impairing musical transients or dynamics. The low-frequency section handles 1,000 watts program (2,000W peak), while the high-frequency sections handles 160 watts program, (320W peak).

**Dimensions (HxWxD):** 14.06" x 25.25" x 11.75" / 357.1mm x 641.35mm x 298.5mm  
**Weight:** 56lbs / 25.4kg 03008650



### VERSARRAY™ 212 MK II



The Versarray™ 212 MK II array is loaded with dual 12" Black Widow® Neo speakers with 4" dual voice coils, ten 2.5" neo midrange speakers arranged in two banks of five each, and four 4.75" planar dynamic ribbon tweeter line sources on a waveguide. Designed to provide modular coverage of medium to large venues and intended for use with the companion Versarray sub models, the Versarray 212 MK II offers extreme versatility in highly demanding performance situations. The low-frequency section handles 2,000 watts program (4,000W peak), while the mid and high sections handle 400 watts program (800W peak) each.

**Dimensions (HxWxD):** 14.06" x 43.13" x 11.75" / 357.1mm x 1095.5mm x 298.5mm  
**Weight:** 102lbs / 46.3kg 03601600



### VERSARRAY™ 118 SUBWOOFER

With premium 13-ply Baltic birch construction, a durable acrylic polyurethane finish, and a 16-gauge, powder-coated perforated metal grille, the Versarray 118 is built to endure years of heavy use. The cabinet is well braced and stiff, and the large vent area and long path allow for huge volumes of air to cool the enclosure with low resistance. Input connections are made via two 4-pin Neutrik® jacks in parallel, or an 8-pin Neutrik with a 4-pin Neutrik thru jack for bi-amping. An optional mounting pole can support a full-range speaker system. 2,400 watts program power handling (4,800W peak).

**Dimensions (HxWxD):** 22.88" x 25" x 26.27" / 581.2mm x 635mm x 667.26mm  
**Weight:** 113.1lbs / 51.3kg 03601460



### VERSARRAY™ 218 SUBWOOFER

An incredible 4,800-watt program rating (9,600W peak) is made possible by Kevlar®-impregnated cones that increase strength and minimize distortion, as well as polyimide-impregnated fiberglass formers, die-cast aluminum frames and 4" diameter edge-wound voice coils with solderless, diffusion-welded OFHC copper leads. The Versarray 218 also features the Peavey UniVent™ venting system, which uses an exclusive process to pump air through the enclosure, maintaining cool operating temperatures, increasing reliability and reducing power compression under heavy continuous-drive conditions. With premium 13-ply Baltic birch construction, a durable acrylic polyurethane finish and a 16-gauge, powder-coated perforated metal grille, the Versarray 218 is built to endure years of heavy use, and tilt-back 4" casters allow easy transport and setup along the way. Input connections are made via two 4-pin Neutrik® jacks in parallel, or an 8-pin Neutrik with a 4-pin Neutrik thru jack for bi-amping. An optional bolt-on Ground Stack Kit allows users to mount up to three Versarray 112 enclosures with full articulation.

**Dimensions (HxWxD):** 43.38" x 25.06" x 26.30" / 1102mm x 636.5mm x 668mm  
**Weight:** 204lbs / 92.5kg 00584470







# ELEMENTS™ C/M SERIES ENCLOSURES

*OVERALL SYSTEM WEATHERIZATION RATING OF: IP45\**

## ELEMENTS™

### THE GREAT OUTDOORS JUST GOT GREATER

The incredibly durable, reliable and versatile Elements™ weatherproof enclosures are a combination of innovative cabinet construction and proven, weatherized components designed for direct contact with the elements in the most demanding climates. Gone are the days of hanging so-called enclosures outside only to replace the speaker in a year or two.

The Elements C series of composite enclosures are constructed from an advanced composite material that is dimensionally stable in wet conditions and resists contamination, yet has the resonant properties of wood. This light and durable material ensures unmatched sonic performance while providing reliable service year after year. The stainless steel grilles of the Elements C series enclosures feature a barrier membrane that repels water yet allows moisture to escape without affecting the sonic performance of the loudspeaker.

The IP45 rated Elements C series is available in three two-way, full range configurations and as a flyable subwoofer.

The Elements M series enclosures feature rugged molded cabinets and a variety of speaker sizes and horn options. All cabinets feature an IP45 environmental rating, thanks to stainless multi-fly-point hardware, sealed terminal connections, weather-repellent grilles and weatherproof speaker cones. The cabinet and hardware designs combine to form a system that can be used in almost any application. The Elements M series array hardware and cabinet design allows cabinets to be mounted in either vertical or horizontal arrays in 5-degree increments. In addition, lighting/power pole mounting hardware is available to accommodate both the M and C series cabinets.

The Elements M series also includes a flyable 212 subwoofer that can be flown alongside in horizontal or vertical arrays.

# ELEMENTS™ C/M SERIES ENCLOSURES

Elements™ — Great Outdoor Sound No Matter The Conditions.



## Elements™ C Series:

### Mounting Provisions:

(12) 3/8"-16 threaded mounting suspension points (3 top, 3 bottom and 2 each side & 1 each at top rear and bottom rear). Three sets of (4) 1/4 x 20 SS inserts, the sets are located on the top, rear, and bottom for use with the Peavey® VM70 and the Peavey Elements™ lighting and power pole mount bracket.

### Enclosure Materials & Finish:

Cabinet is constructed with an advanced composite material, coated in our black Hammerhead™ polyurea with a lightly textured finish.

Triple-layer moisture-repellent grille assembly, consisting of a perforated stainless

steel outer grille, with inner hydrophobic cloth mesh, and a proprietary third layer.

### Input Connections:

Two NL-4 twist lock in parallel, and one 4-position screw terminal barrier strip, with " + + - " parallel wiring (for daisy-chaining). Weather-sealed input cup cover with gland nut.

Quadratic Throat Waveguide™ for horn equipped models; Rotatable horn with available 60 x 40 or 105 x 60 coverage patterns (Elements 108C 75 x 75); Water-resistant Black Widow™ woofers (except Elements 108C); RX™22 compression driver tweeter (all models except 212C Sub); All external hardware is stainless steel; Overall system weatherization rating of: IP45.

**ELEMENTS 108C**  
Dimensions (HxWxD):

17.18" x 11" x 13.25" / 436.4mm x 279.4mm x 336.6mm  
**Weight:** 27lbs / 12.25kg  
03609100

### ELEMENTS 112C

**Dimensions (HxWxD):**  
27.34" x 15.03" x 16.32" / 694.4mm x 382mm x 414.5mm  
**Weight:** 55lbs / 25kg  
**112C 105 X 60RT** 03608700 **112C 60 X 40RT** 03608690

### ELEMENTS 115C

**Dimensions (HxWxD):**  
30.57" x 18" x 17.43" / 776.5mm x 457mm x 443mm  
**Weight:** 61lbs / 27.7kg  
**115C 115 X 60RT** 03608680 **115C 60 X 40RT** 03608670

### ELEMENTS 212C SUBWOOFER

**Dimensions (HxWxD):**  
29.375" x 14" x 16.29" / 746.13mm x 355.6mm x 413.8mm  
**Weight:** 63lbs / 28.6kg  
03609130



ELEMENTS™ C SERIES



ELEMENTS™ M SERIES

## Elements™ M Series

### Mounting Provisions:

Three sets of (4) 1/4 x 20 SS inserts, the sets are located on the top, rear, and bottom for use with the Peavey® VM70 and the Peavey Elements™ lighting and power pole mount bracket. Available horizontal and vertical array brackets. Pole mount stand adapter.

Quadratic Throat Waveguide™ for horn equipped models; Unique trapezoidal enclosure designed to be flown in multiple angles and array combinations; Rotatable horn with available 60 x 40 or 105 x 60 coverage patterns (Elements 108M 75 x 75); Water-Resistant

Black Widow™ woofers (except Elements 108C); RX™22 compression driver tweeter (all models except 212M Sub and Elements 108M); Stainless steel hardware; Weather sealed input panel; Overall system weatherization rating of: IP45.

### ELEMENTS 108M

**Dimensions (HxWxD):**  
20.2" x 9.74" x 10.22" / 513mm x 247.4mm x 259.6mm  
**Weight:** 48.5lbs / 22kg  
03611100

### ELEMENTS 110M

**Dimensions (HxWxD):**  
25.26" x 12.17" x 12.78" / 641.6mm x 309mm x 324.6mm

**Weight:** 41lbs / 18.6kg

**110M 105 X 60RT** 03611130 **110M 60 X 40RT** 03611120

### ELEMENTS 112M

**Dimensions (HxWxD):**  
30.3" x 14.6" x 15.34" / 769.6mm x 370.8mm x 390mm  
**Weight:** 51.7lbs / 23.45kg  
**112M 105 X 60RT** 03611150 **112M 60 X 40RT** 03611140

### ELEMENTS 212M SUB

**Dimensions (HxWxD):**  
30.3" x 14.6" x 15.34" / 769.6mm x 370.8mm x 390mm  
03611160  
**Weight:** 58.5lbs / 26.54kg



## OVERALL SYSTEM WEATHERIZATION RATING OF: IP45\*

**Rotatable Horn with Available  
60 X 40 or 105 X 60 Coverage Patterns** (Elements 108C 75 x75)



### Weather-Sealed Input Cup Cover with Gland Nut

Weather-sealed input cup cover with gland nut, 70 Volt transformer option available and easily upgraded in the field.



### Weather Resistant Woofers



### Elements™ Pole Mounting System

The Elements Pole Mounting System is a simple and straightforward pole mounting solution for the Peavey® Elements Series speaker. With its customizable angle adjustment, it can support installations in a wide range of locations.

03609920



### Field Installed Transformer Option

This optional transformer provides an easy upgrade to 70V/100V transformer use. The transformer comes pre-mounted on a heavy duty metal plate. The existing cover plate is unscrewed and removed from the Elements™ loudspeaker, and the plate mounted transformer installed directly in its place. Connection is made by selecting the proper tap on the transformer, unplugging the male-female connection inside the loudspeaker, and inserting the transformer into the signal chain.



ELEMENTS 108M 100W 03600620  
ELEMENTS 110M 03600680  
ELEMENTS 112M 105X60 03600660  
ELEMENTS 112M 60X40 400W 03600650  
ELEMENTS 112M 03600690

ELEMENTS 212M 400W 03600670  
ELEMENTS 108C 03609100  
C Series ELEMENTS 70/100V 100W 03609950  
C Series ELEMENTS 70/100V 400W 03609940

\*IP45 is the Ingress Protection rating that rates the equipment's resistance to dust and fluids.

# QW<sup>®</sup> SERIES ENCLOSURES



*WORLD-CLASS TOURING AND INSTALLATION ENCLOSURES*

Peavey designed the QW<sup>®</sup> Series for pristine audio reproduction in high-end productions and large venues. QW enclosures are engineered with advanced audio technology and components such as our exclusive Quadratic Throat Waveguide™, 44XT™ 4" titanium diaphragm compression drivers and Pro Rider<sup>®</sup> and Low Rider<sup>®</sup> series woofers, plus very low power compression, low distortion at high output levels, HammerHead™ exteriors and 16-gauge, power-coated, perforated steel grilles.



## QW® 218 SUBWOOFER

A pair of 18" Low Rider® woofers are housed in this remarkably well-braced subwoofer enclosure, which has a frequency response of 47Hz to 1.5kHz and handles 3,200 watts program power (6,400W peak).

**Dimensions (HxWxD):** 49" x 21" x 26.75" / 1244.6mm x 533.4mm x 679.5mm **Weight:** 147lbs / 66.7kg 00571310

## QW® 118 SUBWOOFER

The QW 118 incorporates an extra-high-power handling Low Rider® 18" woofer and a compact, vented cabinet design that features a long path length that can move a large volume of air with very low resistance. This direct-radiator subwoofer has an incredible 1,600-watt program handling rating (3,200W peak) and extra-long speaker cone excursion that combine to produce amazingly clean, deep bass.

**Dimensions (HxWxD):** 28.38" x 21" x 26.75" / 721mm x 533.4mm x 679.5mm **Weight:** 185lbs / 84kg 00571290



QW® ML

QW® 118 SUB

## QW® 2F

Flyable or stackable, the QW 2F is an essential component in high-end sound productions. This enclosure employs a 15" Pro Rider® woofer and 4" voice coil to achieve 1,600 watts program (3,200W peak) and a frequency response of 52Hz to 18kHz. The QW 2F also features a 44XT™ 4" voice coil titanium compression driver coupled to a CH® 942qt constant-directivity horn.

**Dimensions (HxWxD):** F 33.38" x 21.13" x 22.59" R 33.38" x 13.78" x 22.59" / 848mm x 350mm x 574mm **Weight:** 104lbs / 47.2kg 00571130

## QW® 4F

Flying or stacking this high-performance enclosure can make the difference in your sound-reinforcement equation. Dual 15" Pro Rider® woofers and a 44XT™ 4" voice coil titanium compression driver coupled to a CH® 942qt constant-directivity horn power this popular model, which achieves 90° x 40° dispersion and 2,800 watts of program power handling (5,600W peak).

**Dimensions (HxWxD):** 49.25" x 21.13" x 22.69" / 1251mm x 537mm x 576.3mm **Weight:** 142lbs / 64.4kg 00571150

## QW® ML/MR MONITORS

These twin left- and right-facing monitors are both loaded with a Pro Rider® 15" woofer and a 44XT™ 4" voice coil titanium diaphragm compression driver coupled to a CH® 942qt conical horn for clean, clear response and reliability. Both models are full-range or bi-ampable, two-way full-range monitors. 2,000 watts program power handling (4,000W peak).

**Dimensions (HxWxD):** 17.75" x 29.75" x 21.25" / 451mm x 755.7mm x 539.8mm **Weight:** 86lbs / 39kg **QW® ML** 00571320 **QW® MR** 00571330



QW® 2F

QW® 218 SUB

QW® 4F

QW® MR



### Exclusive Quadratic Throat Waveguide™ Technology

Peavey developed its exclusive Quadratic Throat Waveguide technology to eliminate the distortion caused by loudspeaker horns when pushing high sound-pressure levels (SPL).



### 44XT™ Compression Driver

The 44XT™ is a high performance, high power compression driver with a smooth extended high frequency response consisting of our exclusive Radialinear phase plug, one-piece titanium diaphragm and ferrofluid.

The Radialinear phase plug delivers a smooth linear frequency response with low distortion by focusing the acoustical energy and reducing the amount of high frequency cancellations and diffraction present in most other phase plug designs.



### Peavey Low Rider® & Pro Rider® Speakers

The Pro Rider® and Low Rider® driver series represent a new level of power and performance for Black Widow® loudspeakers. These outstanding, high-power handling drivers feature field-replaceable baskets along with high efficiency, reduced distortion and excellent overall sound quality.

# SP® SERIES

*A LIVE SOUND STANDARD FOR MORE THAN THREE DECADES*

For uncompromising rock-solid live audio performance in a lighter, more compact package, the new full line of Peavey SP® Series delivers. Throw it in the van, install it in the club, or hang it from the ceiling—the SP's rugged design can handle it. Premium field-replaceable Black Widow® speakers will handle anything you give it.

## SP® 2

Two-way, full-range/bi-ampable Sound Reinforcement system; 64Hz to 17kHz; Exclusive Quadratic Throat Waveguide™ technology; 1,000 watts program, 2,000 watts peak; Asymmetrical horn aims the sound down 10° (at the audience, not over their heads); 15" BWX Black Widow® 4" diameter VC woofer; RX™22CT compression driver; Sound Guard™ III tweeter protection; Full-range inputs include two 1/4" phone jacks, one four-pin, twist lock connector & one Neutrik NL4 Speakon switching jack (bi-amp only); Plywood finished in black textured paint; Full length black powder coated metal grille; M8 threaded mounting suspension points (3 top, 3 bottom and 2 each side & 1 each top rear and bottom rear); Built-in stand-mount adapter and four large rubber feet on bottom for floor use.

### Dimensions (HxWxD):

26.53" x 16.75" x 16.93"

674mm x 426mm x 430mm

### Weight:

55lbs (25kg)

03614800

## SP® 4

Quasi-three way, full-range/bi-ampable Sound Reinforcement system; 69Hz to 17kHz; Two 15" BWX Black Widow® 4" diameter VC woofers; Exclusive Quadratic Throat Waveguide™ technology; 2,000 watts program, 4,000 watts peak; Asymmetrical horn aims the sound down 10° (at the audience, not over their heads); Two 15" BWX Black Widow® 4" diameter VC woofers; RX™22CT compression driver; Sound Guard™ III tweeter protection; Full-range inputs include two 1/4" phone jacks, one four-pin, twist lock connector & one Neutrik NL4 Speakon switching jack (bi-amp only); Trapezoidal plywood enclosure finished in black textured paint; Full length black powder coated metal grille; M8 threaded mounting suspension points (3 top, 3 bottom and 2 each side & 1 each top rear and bottom rear); Four large rubber feet on bottom for floor use.

### Dimensions (HxWxD):

Front: 43.5" x 16.75" x 16.85"

1105mm x 426mm x 428mm

Rear Width: 11.58" (294mm)

### Weight:

87lbs (39.5kg)

03614810



**SP® 4**

2,000W Program 4,000W Peak



**SP® 2**

1,000W Program 2,000W Peak



**SP® 118 SUBWOOFER**

1,200W Program 2,400W Peak



**SP® 218 SUBWOOFER**

2,400W Program 4,000W Peak





### SP® 12M / 15M MONITORS

1,000W Program 2,000W Peak



### SP® 118 SUBWOOFER

18" 1808-8 AL CP Pro Rider® woofer; 1,200 watts program, 2,400 watts peak power handling; Low frequency response down to 41Hz; Inputs include one four-pin twist lock connector and two 1/4" phone jacks; Pole mount plate built-in, threaded for positive pole support; Full-length, wrap-around perforated metal grille; Threaded pole for mount included; Multiple fly points; Four large rubber feet on bottom for floor use.

Dimensions (HxWxD): 26.38" x 22.84" x 24.5" 670mm x 580mm x 622mm

Weight: 77lbs (35kg) 03614820

### SP® 218 SUBWOOFER

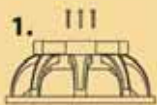
Two 18" Pro Rider® woofers; 2,400 watts program, and 4,800 watts peak power handling; Low frequency response down to 41Hz; Inputs include one four-pin twist lock connector and two 1/4" phone jacks all in parallel, and one Neutrik® 'Speakon' switching jack for independent access to the woofers; Threaded pole for mount included; Pole mount plate built-in, threaded for positive pole support; Full-length, wrap-around perforated metal grille; Tilt-back casters

Dimensions (HxWxD): 47.28" x 20.38" x 26.81" 1201mm x 518mm x 68mm

Weight: 135lbs (61.3kg) 03614830

#### BLACK WIDOW® WOOFERS WITH FIELD-REPLACEABLE BASKETS

High-output woofer with a 4" voice coil, Kevlar-impregnated cone, voice coil cooling vent plate and a cast frame for 600W continuous power – and a field-replaceable basket for convenience and economy. Replaceable baskets eliminate the need for re-coning speakers and the frustration and delays associated with the re-coning process. It only takes a few minutes to replace a basket and you are back in business.



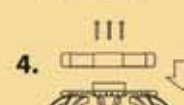
#### BASKETS ARE REPLACED IN FOUR EASY STEPS:



1. Remove three screws on back of magnet structure.



2. Lift the magnet structure off the basket frame.



3. Clean the voice coil "gap."

4. Align screw holes, lower structure into place on new basket frame, insert screws and tighten.

### SP® 12M / SP® 15M

Two-way, full-range floor monitor; 1,000 watts program; 2,000 watts peak; BWX Black Widow® woofer, 4" VC, field-replaceable basket; RX™22CT compression driver with titanium diaphragm; Sound Guard™ III tweeter protection; Dual-baffle angles of 45° or 30°; Two 1/4" full-range phone-jack inputs in parallel with a four-pin twist lock connector; Metal stand mount adapter incorporated and four rubber feet on side for angle use; Plywood enclosure finished in black textured paint. Full length black powder coated metal grille.

#### SP 12M

Dimensions (HxWxD): 45° baffle orientation 15.50" x 23.44" x 18.32" 30° baffle orientation: 15.63" x 23.44" x 17.50"

Weight: 49lbs (22.3kg) 03614960

#### SP 15M

Dimensions (HxWxD): 45° baffle orientation: 16.88" x 25.75" x 19.63" 30° baffle orientation: 14.5" x 25.75" x 19.25"

Weight: 54lbs (24.5kg) 03614970







# PVX™ SERIES ENCLOSURES

*RUGGED, RELIABLE, FLYABLE...BEST IN CLASS PERFORMANCE*

## PVX™ 12/PVX™ 15

Two-way sound reinforcement enclosure; Heavy-duty woofer with 2 3/8" voice coil & 50oz. magnet; RX14 compression driver, with 1.4" titanium diaphragm; Exclusive Quadratic Throat Waveguide™ technology, 100 by 50 degree coverage; Asymmetrical horn aims the sound down 10°, at the audience, not over their heads; Crossover network for driver protection and EQ; High frequency driver protection; Durable plastic injection-molded trapezoidal enclosure; Extra angled section on right side allows floor monitor use; Full-coverage heavy-duty perforated steel grilles, with powder coat finish; Pole mount molded-in; Top, bottom, and right side flying point inserts.

### PVX 12

#### Dimensions (HxWxD):

F 24.5" x 16.1" x 15" / 622.3mm x 409mm x 381mm

R 22.75" x 8.75" x 15" / 578mm x 222.3mm x 381mm

**Weight:** 37lbs / 16.8kg

03602440

### PVX 15

#### Dimensions (HxWxD):

F 28.25" x 18.9" x 18.71" / 717.6mm x 480mm x 475mm

R 26.25" x 10.25" x 18.71" / 667mm x 260.35mm x 475mm

**Weight:** 47lbs / 21.32kg

03602430

### FEATURING:

**Top, bottom, and right side flying point inserts** Five sets of flying/mounting points, two on the top, two on the bottom, and one on the side, with a total of 16 cabinet inserts, provide for the ultimate in installation flexibility.

### FEATURING:

#### Molded-in stand mount cup

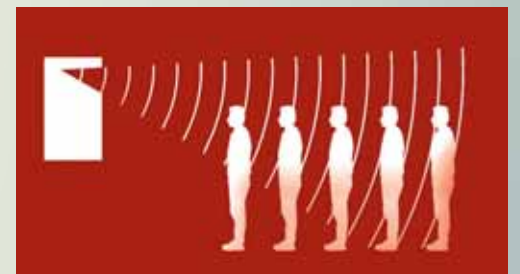
Facilitates portable use for live music or PA sound. PVX 12 shown mounted on PVXp Subwoofer.



### FEATURING:

#### Exclusive Quadratic Throat Waveguide™ Technology

Asymmetrical Quadratic Throat Waveguide horns aim their coverage patterns 15° upward and 35° downward – directing sound to your audience, not over their heads.



# PV® SERIES ENCLOSURES

*PROVEN PARTY STARTERS AND ESSENTIAL GEAR FOR THE STAGE*



PV 15 Monitor

PV 115

PV 215

PV 112  
PV 118 Subwoofer

PV 12 Monitor

## PV® 112

Housed in a lightweight-yet-rugged, carpet-covered trapezoidal enclosure, the PV 112 is a two-way speaker system based on a 12" heavy-duty woofer and an RX™14 titanium diaphragm dynamic compression driver mounted on a 90° by 40° coverage constant-directivity horn. Rated at 800 watts peak power handling.

### Dimensions (HxWxD):

F 25.125" x 15.875" x 14.75" / 638mm x 403.2mm x 374.7mm

R 25.125" x 8.125" x 14.75" / 638.2mm x 206.4mm x 375mm

Weight: 47lbs / 21.3kg 00570800

## PV® 115

Peavey's most affordable two-way speaker cabinet with a single 15" woofer (not to mention a hefty 2.375" voice coil) is capable of an impressive 800 watts peak. Also features an RX14 compression driver with a 1.4" titanium diaphragm and 1" exit.

### Dimensions (HxWxD):

F 31.75" x 18.38" x 14.25" / F 806.5mm x 466.9mm x 362mm

R 31.75" x 11.25" x 14.25" / R 806.5mm x 286mm x 362mm

Weight: 53lbs / 24kg 00572150

## PV® 215

This two-way, double 15" speaker enclosure can handle 1,400 watts peak power and pump out plenty of low end, with a 60° x 40° constant directivity horn for crisp highs. Also includes a heavy-duty crossover and metal grille.

### Dimensions (HxWxD):

F 48.25" x 18.38" x 14.25" / 1225.6mm x 467mm x 362mm

R 48.25" x 11.75" x 36.2" / 1225.6mm x 298.5mm x 919.5mm

Weight: 79lbs / 35.8kg 00572170

## PV® 12M/15M

Rated at 1,000 watts peak power handling capability, these rugged, trapezoidal-shaped monitors are built to withstand the rigours of the road. Both models are two-way monitor systems featuring a premium Sheffield® woofer and a 1.4" titanium-diaphragm 14T™ compression driver coupled to a constant-directivity horn. Two 1/4", full-range parallel inputs allow easy daisy chaining to additional monitors, and both models can be angled at either 30° or 45° from the floor in addition to being pole mounted.

PV 12M

### Dimensions (HxWxD):

22.375" x 17.75" x 12.5625" / 568.33mm x 450.9mm x 319.1mm

Weight: 37lbs / 16.78kg 00570650

### PV 15M

### Dimensions (HxWxD):

25" x 17.75" x 12.563" / 635mm x 450.9mm x 319.1mm,

Weight: 39lbs / 17.69kg 00570670

## PV® 118 SUB

A vented subwoofer enclosure, the PV 118 features an optimized internal low-pass crossover network and Pro 18" premium woofer for 400 watts program power handling and a frequency response of 40Hz to 180Hz. Solidly constructed from Dado-jointed 3/4" MDF and fronted by a heavy-duty, powder-coated metal grille.

### Dimensions (HxWxD):

27" x 21.88" x 19.63" / 685.8mm x

555.8mm x 499mm

Weight: 73lbs / 33.1kg 00573840





PR® SUB

PR® 15

PR® 12

## PR® SERIES ENCLOSURES

400 Watts Program; 800 Watts Peak

Are you in need of high-performance speaker enclosures that are powerful, yet cost efficient? The PR® Series enclosures are, without a doubt, the most reliable speakers on the market at this price. From crystal-clear audio of the PR® 10, PR® 12 and PR® 15; to the booming low-end response of the PR® Sub, the PR Series will shatter your expectations!

### PR® SUB

15" heavy-duty woofer with 2 3/8" voice coil and 50oz. magnet; 400 Watts program/800 Watts peak power handling; Lightweight trapezoidal enclosure; Durable, plastic, injection- molded enclosure; Heavy duty steel grille; Molded-in pole mount; Top and bottom flying point insert.

**Dimensions (HxWxD):** 28.562" x F 21.312" R 11.5" x 17" / 725.5mm x F 541.3mm x R 292.1mm x 431.8mm

**Weight:** 42lbs / 19kg 00571220

### PR® 15

Two-way sound reinforcement enclosure; 15" heavy duty woofer with a 2 3/8" voice coil; RX™ 14 1.4" titanium diaphragm compression driver; 400 watts program/800 watts peak power handling; Crossover network for driver protection and EQ; High frequency driver protection; Lightweight trapezoidal enclosure; Durable plastic injection-molded enclosure; Heavy duty steel grille; Molded-in pole mount; Top and bottom flying point inserts; 90° x 40° coverage constant directivity horn for better off-axis tonality.

**Dimensions (HxWxD):** 28.562" x F 21.312" x 17" / 725.5mm x 541.32mm x 431.8mm

**Weight:** 42lbs / 19kg 00583910

### PR® 12

Two-way sound reinforcement enclosure; 12" heavy duty woofer with a 2 3/8" voice coil; RX14 1.4" titanium diaphragm compression driver; 400 watts program/800 watts peak power handling; Crossover network for driver protection and EQ; High frequency driver protection; Lightweight trapezoidal enclosure; Durable plastic injection-molded enclosure; Heavy duty steel grille; Molded-in pole mount; Top and bottom flying point inserts; 90° x 40° coverage constant directivity horn for better off-axis tonality.

**Dimensions (HxWxD):** 23.6875" x 17" x 13.75" / 601.66mm x 431.8mm x 349.25mm

**Weight:** 33lbs / 14.97kg 00583900

### PR® 10

Two-way sound reinforcement enclosure; 10" heavy duty woofer with a 2 3/8" voice coil; 400 watts program/800 watts peak power handling; Crossover network for driver protection and EQ; High frequency driver protection; 90° x 40° coverage constant directivity horn for better off-axis tonality; Lightweight trapezoidal enclosure; Durable plastic injection-molded enclosure; Heavy duty steel grille; Molded-in pole mount; Top and bottom flying point inserts.

**Dimensions (HxWxD):** 19.5" x 14" x 13.125" / 495.3mm x 355.6mm x 333.4mm

**Weight:** 28lbs / 12.7kg 00583890

# IMPULSE® SERIES ENCLOSURES



*PREMIUM LIGHTWEIGHT, WEATHER-RESISTANT,  
MOLDED ENCLOSURES*



IMPULSE® 1012

IMPULSE® 100

IMPULSE® 1015

IMPULSE® 6

IMPULSE® II  
MONITOR



## IMPULSE® 1015

With a 15" Black Widow® loudspeaker and a 2" voice coil RX™22 titanium compression driver – coupled to a 90° x 45° directivity horn – the Impulse 1015 provides exceptional sound in a wide range of applications. Ferrofluid cooled. Available in black or white. Power handling up to 2,000 watts peak.

### Dimensions (HxWxD):

F 28.56" x 21.31" x 17" / 725.4mm x 541.3mm x 431.8mm  
R 26.75" x 11.5" x 17" / 679.5mm x 292.1mm x 431.8mm  
Weight: 56lbs / 25.4kg White 00442600 Black 00442590

## IMPULSE® 1012

This versatile loudspeaker enclosure features the same components as the 1015 model, but with a 12" Black Widow® speaker. The Impulse 1012 is available in black or white.

### Dimensions (HxWxD):

F 23.69" x 17.81" x 13.75" / 678mm x 452.4mm x 349.3mm;  
R 22.13" x 10" x 13.75" / 562mm x 254mm x 349.3mm  
Weight: 42lbs / 19kg White 00442540 Black 00442530

## IMPULSE® 100

Loaded with a 10" premium long-throw woofer and a 14XT™ 1.4" titanium compression driver on a molded-in horn for smooth response. The Impulse 100 is available in black or white.

### Dimensions (HxWxD):

F 18.88" x 14" x 13.75" / F 479.6mm x 355.6mm x 349.3mm;  
R 17.63" x 8.25" x 13.3" / 448mm x 209.6mm x 338mm  
Weight: 29lbs / 13.2kg Black 00360460 White 00483640

## IMPULSE® 6 / 6T

An excellent indoor/outdoor, two-way speaker system, perfect for foreground music and speech reinforcement. A 5 1/4" woofer and 1" soft-dome tweeter provide up to 100dB SPL and handle up to 200 watts peak power. The 6T model has a built-in transformer for 70-volt line distribution systems.

Available in black or white.

Dimensions (HxWxD): 11.5" x 7.5" x 6.5" / 292mm x 190.5mm x 165mm

Weight: 6lbs / 2.7kg

6T-Black 00350620 6T-White 00350630

6-Black 00350600 6-White 00350610

## IMPULSE® II MONITOR

The perfect personal stage monitoring system! The Impulse II is equipped with dual 4 1/2" speakers with an onboard level control, while input connections are made via two 1/4" phone jacks in parallel for easy daisy chaining. Handles 200 watts peak at 16 ohms.

Dimensions (HxWxD): 11.5" x 7.5" x 6.5" / 292mm x 190.5mm x 165mm

Weight: 7lbs / 3.18kg 00500370



Versamount™ 35  
Black 03010770  
White 03010760



VM70  
Black 03011050  
White 03011040



## Mounting Options

Impulse® and PR® Series enclosures feature molded-in stand adapters and flying points on the top and bottom. Many mounting options are available.





# PORTABLE SOUND REINFORCEMENT SYSTEMS





# TRIFLEX® II PORTABLE SOUND SYSTEM

*Portable 1,000 Watt, three-way Sound Reinforcement System.*

The TriFlex® II is a three-piece, 2-channel sound system, already tweaked and ready to go for sound reinforcement, DJ gigs, and more music playback duties. The TriFlex II features a cabinet with a premium 15" woofer, a pair of two-way satellite speakers with a 10" heavy-duty woofer, and an RX™14 titanium diaphragm dynamic compression driver mounted on a 75° by 75° coverage Quadratic Throat Waveguide™ horn. The TriFlex II features a bi-amped power section that provides 500 watts peak power for the subwoofer and 250 watts peak power for each satellite speaker.

Input jacks provided are a balanced input XLR and a 1/4" phone combo jack, with a pair of RCA phono jacks available, as well as a master volume control and a sub volume control.

The Subwoofer cabinet includes a 15" heavy-duty woofer, a preamp, an electronic crossover, a subsonic filter, and three power amps. Equipped with 3" heavy-duty locking casters, the subwoofer cabinet can be rolled around with the two satellite speakers secured on top.

**1,000W active 2-channel speaker system; One shared subwoofer cabinet houses the inputs and power amps; Dual two-way satellite speakers with pole stand adapters; Subwoofer has 15" woofer with 500W peak available power; Satellite speakers have 10" woofer and RX™14 1.4" compression driver; 250W peak available power to each satellite speaker; Peavey's DDT™ compression on the satellite power amps; System comes with two 15' speaker cables; Protective slipcover with cable storage pockets and built-in Velcro retaining straps; Heavy-duty locking casters on subwoofer cabinet for transport of system; Satellite speakers fit on top of the subwoofer for easy transport; Four-pin twist-lock connectors on amplifier outputs and satellite inputs.**

## Complete System

**Dimensions (HxWxD):** 43" x 20.37" x 23.54" / 1092.2mm x 517.4mm x 598mm

**Weight:** 146lbs / 66.2kg 03008830

## Subwoofer

**Dimensions (HxWxD):** 19.65" x 28" x 28.1" / 499mm x 711mm x 713.7mm

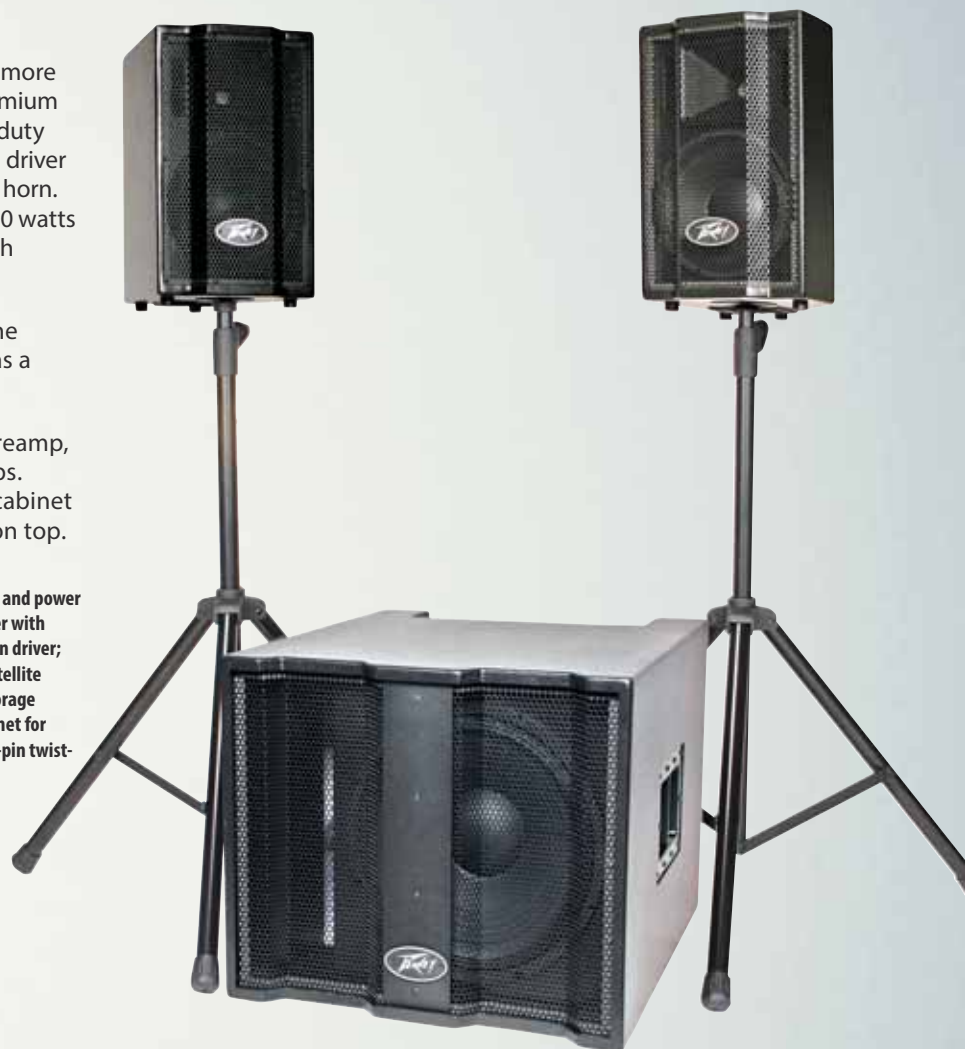
**Weight:** 25lbs / 11.3kg

## Satellite Speakers

**Dimensions (HxWxD):** 19.6" x 11.83" x 11.83" / 498mm x 300.5mm x 300.5mm

**Weight:** 24lbs / 10.9kg

**Optional Speaker Stands** 03011200



*1,000 Watts Total – 500 Watts Peak Power  
For The Subwoofer And 250 Watts Peak Power  
For Each Satellite Speaker.*



Sets up in minute, the TriFlex® II is a three-piece, 2-channel sound system, already tweaked and ready to go for sound reinforcement, DJ gigs, and more music playback duties

# ESCORT® PORTABLE SOUND SYSTEM

*NO HEAVY LIFTING, JUST HEAVY AUDIO!*

## ESCORT® 3000, 5000, & 6000

The Escort® series integrates the entire PA system into one complete, easy to use, easy to transport, highly reliable, incredible sounding package, making it the perfect choice for schools, churches, DJs, and small music groups.

The new Escort takes the reliability, transportability, and audio quality of the original and combines it with state-of-the-art features such as digital multi-effects, USB MP3 player, Peavey's MidMorph® technology, and patented FLS® (Feedback Locating System).

The carrying case provides storage for everything needed for sound, including plenty of room for optional accessories such as microphones and cables. In addition to the included folding speaker stands, the case even includes luggage style wheels to roll the entire system away. No heavy lifting, just heavy audio!

Two-way speaker system with 10" woofer; RCA / 3.5 TRS media inputs; USB MP3 playback; Exclusive FLS® (Feedback Locating System); Digital multi-effects; MidMorph® EQ; LCD screen for ease of file playback and effect selection; Custom rubberized knobs; 7-band graphic equalizer; Two folding speaker stands; Two 15' speaker cables; Storage compartment for optional accessories; Convenient package with luggage-style wheels.

### Dimensions (HxWxD):

14.5" x 36.75" x 15.5" / 368.3mm x 933.5mm x 393.7mm

### Weight: 50lbs / 22.68kg

Escort® 3000 03608880 Escort® 5000 03608930 Escort® 6000 03608630



### ESCORT® 3000

300 watts (150 x 2); Seven channels; Six combination XLR 1/4" inputs

### ESCORT® 5000

500 watts (250 x 2); Eight channels; Seven combination XLR 1/4" inputs; Monitor send; Subwoofer output

### ESCORT® 6000

600 watts (300 x 2); Nine channels; Seven combination XLR 1/4" inputs; Monitor send; Subwoofer output; Bluetooth® wireless audio playback



Custom Latch System



Wheels for Easy Transport



Accessory Compartment



Integral 3-Piece Portable Package



Two-way Pro Speaker System



Dual Mounting Capacity



# BEST IN CLASS!

Don't be fooled by its portability — the 600 Watt RMS Escort® 6000 will amaze! Capable of REAL DJ sound levels. Combined with a PVX™ p Sub, the Escort 6000 will handle the majority of 200 to 300 seat events.



Optional Mixer Stand  
(00496340)

**Speaker stands included in package!**  
**SETS UP IN SECONDS!**





# **MESSENGER<sup>®</sup>** PORTABLE SOUND REINFORCEMENT THE SIZE OF A BRIEFCASE

The Messenger<sup>®</sup> defies its compact size – at 24" wide and a mere 24.5lbs – projecting the power to easily captivate a conference room. Travelers will love its portability and self-contained design that sets up in seconds and includes ample storage space to secure your microphone and accessories.

With exclusive Peavey audio technologies built in, you can make full use of its 100 watts and stunningly clear sound with the confidence of Peavey's legacy of innovation behind you.



5-band EQ with FLS<sup>®</sup> (Feedback Locating System); Split Track MIX<sup>™</sup> with independent and master volume controls and 3-band EQ; Storage space for mic and cables; Lid lifts up to be used as a lectern; Complete "Super Portable" PA system includes two speakers, 100 watt, 5-channel mixer/amplifier, PV'i 100 microphone, XLR microphone cable and two 15' speaker wires.

**Dimensions (HxWxD):**  
 13.5" x 24.5" x 5.25" / 343mm x 622.3mm x 133.4mm

**Weight:** 24.5lbs / 11.1kg  
 00573540



**OPTIONAL MESSENGER<sup>®</sup> SPEAKER STANDS/BAG (2)**  
 Package includes two stands with adapters; 00590200





## SOLO® PORTABLE PA

*Portable, Battery-Powered*

With its ability to use either AC power or batteries, the Solo® can be used for both indoor and outdoor sound reinforcement requirements. There are many places where you need amplification and it's just not practical to load or unload a lot of equipment. The Solo is a grab and go sound reinforcement system that delivers great sound no matter your location.

00476100    Optional Battery Eliminator    00050070

## AUDIO PERFORMER PACK™

*Everything Needed For A Sound Reinforcement System  
Included In One Package*

Two PV'i 10 10" speaker enclosures; Two PV'i 100 dynamic cardioid microphones;  
Two speaker stands; Includes PV'i 4B mixer with four audio channels (XLR and 1/4"  
inputs) and reverb on each; PVi 4 also includes CD input, record output, line out and  
100 watts of power into 4 ohms.  
00595700



## PV® i PORTABLE

The PVi features 300 watts of power for crystal-clear audio reproduction from a variety of sources. This 8-channel system includes four XLR or 1/4" microphone inputs and two stereo inputs featuring 1/8", RCA, or 1/4" inputs. Each channel includes three bands of EQ along with a variety of digital effects with LED display. In addition, the PVi portable is capable of playing back MP3 audio tracks via USB. Recording audio out can easily be done digitally via USB or via the onboard analog record RCA outputs. A 7-band EQ completes the master section allowing the audio to be tuned for a variety of different environments. This self-contained portable PA system features rugged metal latches and includes speakers and cables.

300 watts; 8-channel powered mixer; Full 3-band EQ per channel; 2x stereo channels; Media inputs; Record outputs; Analog and digital record outputs; Built-in digital effects and delay; 7-band master Graphic EQ; USB input for MP3 playback; EFX send and return; Includes speakers and speaker cable Assignable stereo power section. 03608460



# P2™ POWERED LINE ARRAY SYSTEM

RAISING THE BAR FOR PRICE & PERFORMANCE



## BTS™ 5.35

A Wireless Stereo Speaker For Connection With Your Mobile Phone, PC, Notebook, Or Any Bluetooth-Enabled Stereo Device

With a one-to-one pairing that protects listening privacy, the BTS 5.35 provides wireless A2DP Bluetooth stereo-music streaming and supports AFHSS/AVRCP/Class II (10 ~ 30 meters). The speaker accepts both wireless and wired audio sources, and is compatible with any PC via Bluetooth, as well as all Bluetooth-enabled stereo smartphones and any brand of stereo-Bluetooth-enabled notebook.

The speaker's powerful 5" subwoofer features a long-throw bass effect that supports movie-watching with encoded DTS®/Dolby®/THX® home-theater sound. The power rating is 35 watts RMS, with a max power of 54 watts RMS.

**Output Power:** 35 watts RMS, voltage @13V; **Max Output Rating:** 54 watts RMS, voltage @18V; **Frequency Responses:** 20 ~ 20kHz; **Lowpass Driver:** 5.25" x1 (in total), mixed paper cone; **High-pass Driver:** 2.5" x2 full range + 2 treble, PP silver coated; **Lowpass Filter:** 80 ~ 150Hz; **Highpass Filter:** 600 ~ 20kHz; **Wireless Technology:** 2.4G Bluetooth technology; **Operation:** Auto Pairing, Class II 10 meters; **Bluetooth Integrated Chip set:** CSR BC05; **Loudspeaker Type:** Active; **Amplifier:** Class AB / Analog IC NE5532.

**Dimensions (HxWxD):** 9.5" x 9.5" x 9.5" / 241mm x 241mm x 241mm

**Weight:** 12.1lbs / 5.5kg 03017330



The Peavey P2™ powered line array system raises the bar for price and performance. With incredible 20Hz to 20kHz amplifier fidelity in a super compact design, this portable PA system delivers clarity and performance previously unavailable in this category.

Eight custom 4" drivers deliver pristine clarity whether you are a DJ or a performing artist. The line array format is the perfect solution to provide a wide audience coverage in a low profile package.

The P2's 12", 40Hz capable sub is the perfect combination of portability and punch. On board advanced DSP provides optional frequency boost/cut for a variety of audio applications.

**Variable Mic/Line input; 1/4" XLR combination input; XLR through output; Onboard DSP; Low Cut/Boost switch; Vocal boost selector; 3 channel input; Dual RCA inputs; Dual 1/4" inputs; Fan cooled ultra reliable power supply; 8X4" custom high frequency drivers; 1 12" custom woofer. 03615180**



# IPR™ 2 POWER AMPLIFIERS

*LIGHT ON WEIGHT, BUT HEAVY ON POWER AND RELIABILITY*

Boasting a net weight of just over 8lbs on the lightest model, the groundbreaking IPR2 Series utilizes an advanced design that allows our engineers to dramatically reduce weight while increasing output power, reliability, and thermal efficiency. IPR2 Series amplifiers are designed with a resonant switch-mode power supply and a high-speed class-D topology that yields the highest audio resolution and efficiency available – and all at a cost that shatters the old-guard paradigm of power-amp valuation. This isn't about "dollars per watt." This is pennies per watt.



## IPR™ 2 SERIES

Two-Channel independent fourth-order Linkwitz-Riley crossovers; DDT™; Revolutionary IPR™ class D topology; Detented input controls; Speakon output connectors; Lightweight; LED illuminated; Combi XLR/1/4" inputs; Individual signal pass 1/4" jacks on each channel.

### IPR™ 2 2000

**Rated watts 2ch x 2 ohms:** 1100 watts 20ms repetitive burst  
900 watts 1% THD both channels driven @ 1kHz  
**Rated watts 2ch x 4 ohms:** 600 watts 20ms repetitive burst  
570 watts 1% THD / 530 watts 0.15% THD, both channels driven @ 1kHz  
**Rated watts 2ch x 8 ohms:** 370 watts 20ms repetitive burst  
325 watts 1% THD / 300 watts 0.15% THD, both channels driven @ 1kHz  
**Dimensions (HxWxD):** 3.5" x 19" x 10.5" behind front panel, +0.6" for handle  
88.9mm x 482.6mm x 266.7mm behind front panel, +15.24mm for handle  
**Weight:** 8.16lbs / 3.7kg 03609460

### IPR™ 2 3000

**Rated watts 2ch x 2 ohms:** 1750 watts 20ms repetitive burst  
1450 watts 1% THD both channels driven @ 1kHz  
**Rated watts 2ch x 4 ohms:** 950 watts 20ms repetitive burst  
900 watts 1% THD / 815 watts 0.15% THD, both channels driven @ 1kHz  
**Rated watts 2ch x 8 ohms:** 525 watts 20ms repetitive burst  
500 watts 1% THD / 430 watts 0.15% THD, both channels driven @ 1kHz  
**Dimensions (HxWxD):** 3.5" x 19" x 10.5" behind front panel, +0.6" for handle  
88.9mm x 482.6mm x 266.7mm behind front panel, +15.24mm for handle  
**Weight:** 8.16lbs / 3.7kg 03609520

### IPR™ 2 5000

**Rated watts 2ch x 2 ohms:** 3230 watts 20ms repetitive burst  
2530 watts 1% THD both channels driven @ 1kHz  
**Rated watts 2ch x 4 ohms:** 1985 watts 20ms repetitive burst  
1700 watts 1% THD / 1470 watts 0.15% THD, both channels driven @ 1kHz  
**Rated watts 2ch x 8 ohms:** 1175 watts 20ms repetitive burst  
1025 watts 1% THD / 880 watts 0.15% THD, both channels driven @ 1kHz  
**Dimensions (HxWxD):** 3.5" x 19" x 10.5" behind front panel, +0.6" for handle  
88.9mm x 482.6mm x 266.7mm behind front panel, +15.24mm for handle  
**Weight:** 13.67lbs / 6.2kg 03004350

### IPR™ 2 7500

**Rated watts 2ch x 2 ohms:** 4750 watts 20ms repetitive burst  
3750 watts 1% THD both channels driven @ 1kHz  
**Rated watts 2ch x 4 ohms:** 2800 watts 20ms repetitive burst  
2450 watts 1% THD / 2020 watts 0.15% THD, both channels driven @ 1kHz  
**Rated watts 2ch x 8 ohms:** 1550 watts 20ms repetitive burst  
1425 watts 1% THD / 1200 watts 0.15% THD, both channels driven @ 1kHz  
**Dimensions (HxWxD):** 3.5" x 19" x 10.5" behind front panel, +0.6" for handle  
88.9mm x 482.6mm x 266.7mm behind front panel, +15.24mm for handle  
**Weight:** 14.57lbs / 6.61kg 03004250



The revolutionary Peavey IPR2 DSP Series power amplifiers are the only power amps to integrate Waves® MaxxBass® technology, which uses psycho-acoustics to create precise harmonic overtones that give the illusion of adding low frequencies to the mix. This technology allows sound engineers to dial more perceived low-end into a system without adding more power amps, processing, or subwoofers. Hi-pass filters on every channel remove unwanted rumble and noise, and balanced AUX and Master outputs ensure a clean noise-free signal to your powered speakers or power amplifier.



with WAVES®  
**MAXX BASS®**



## IPR™2 DSP SERIES

Lightweight; Revolutionary IPR class D topology; Individual signal pass 1/4" jacks on each channel; Combi XLR/1/4" inputs; two-pole twist lock output connector; Fully Function Loudspeaker management DSP; 120mS of delay per channel; 4 bands of parametric equalization per channel; Security Lock; 2-channel independent digital and assignable; fourth-order Linkwitz-Riley crossovers; Setup Wizard; DDT®; MaxxBass® bass enhancement circuitry; Detented Input controls; Horn-EQ each channel; Speakon output connectors; Blue backlit LCD screen; LED illuminated.

### IPR™2 2000 DSP

**Rated watts 2ch x 2 ohms:** 1100 watts 20ms repetitive burst

900 watts 1% THD both channels driven @ 1kHz

**Rated watts 2ch x 4 ohms:** 600 watts 20ms repetitive burst

570 watts 1% THD / 500 watts 0.15% THD, both channels driven @ 1kHz

**Rated watts 2ch x 8 ohms:** 370 watts 20ms repetitive burst

325 watts 1% THD / 270 watts 0.15% THD, both channels driven @ 1kHz

**Dimensions (HxWxD):** 3.5" x 19" x 10.5" behind front panel, +0.6" for handle

88.9mm x 482.6mm x 266.7mm behind front panel, +15.24mm for handle

**Weight:** 8.82lbs / 4kg 03609490

### IPR™2 3000 DSP

**Rated watts 2ch x 2 ohms:** 1750 watts 20ms repetitive burst

1450 watts 1% THD both channels driven @ 1kHz

**Rated watts 2ch x 4 ohms:** 950 watts 20ms repetitive burst

900 watts 1% THD / 815 watts 0.15% THD, both channels driven @ 1kHz

**Rated watts 2ch x 8 ohms:** 525 watts 20ms repetitive burst

500 watts 1% THD / 430 watts 0.15% THD, both channels driven @ 1kHz

**Dimensions (HxWxD):** 3.5" x 19" x 10.5" behind front panel, +0.6" for handle

88.9mm x 482.6mm x 266.7mm behind front panel, +15.24mm for handle

**Weight:** 12.4lbs / 5.62kg 03609550

### IPR™2 5000 DSP

**Rated watts 2ch x 2 ohms:** 3230 watts 20ms repetitive burst

2530 watts 1% THD both channels driven @ 1kHz

**Rated watts 2ch x 4 ohms:** 1985 watts 20ms repetitive burst

1700 watts 1% THD / 880 watts 0.15% THD, both channels driven @ 1kHz

**Rated watts 2ch x 8 ohms:** 1175 watts 20ms repetitive burst

1025 watts 1% THD / 880 watts 0.15% THD, both channels driven @ 1kHz

**Dimensions (HxWxD):** 3.5" x 19" x 10.5" behind front panel, +0.6" for handle

88.9mm x 482.6mm x 266.7mm behind front panel, +15.24mm for handle

**Weight:** 13.67lbs / 6.2kg 03004470

### IPR™2 7500 DSP

**Rated watts 2ch x 2 ohms:** 4750 watts 20ms repetitive burst

3750 watts 1% THD both channels driven @ 1kHz

**Rated watts 2ch x 4 ohms:** 2800 watts 20ms repetitive burst

2400 watts 1% THD / 2020 watts 0.15% THD, both channels driven @ 1kHz

**Rated watts 2ch x 8 ohms:** 1550 watts 20ms repetitive burst

1425 watts 1% THD / 1200 watts 0.15% THD, both channels driven @ 1kHz

**Dimensions (HxWxD):** 3.5" x 19" x 10.5" behind front panel, +0.6" for handle

88.9mm x 482.6mm x 266.7mm behind front panel, +15.24mm for handle

**Weight:** 14.57lbs / 6.61kg 3004510

Waves® and MaxxBass® are registered trademarks of Waves Audio Ltd. All rights reserved.



# AUDIO PROCESSORS

DIGITOOL® SERIES

*Loudspeaker Management, Matrix Mixing, And Room Combining*





## DIGITOOL BY DEFINITION = SIMPLICITY

*The Brains Behind Any Great Sound System*

The Digitoool® MX16, MX32, and LIVE are a family of digital audio processing units built on the rich history of the original Digitoool MX and designed for the audio professional. Each Digitoool has the power and flexibility to perform loudspeaker management functions in addition to matrix mixing, room combining, and other audio processing functions for installed and portable sound systems. Each model features a full-color front panel display screen with navigation and editing controls, front panel input-output mute buttons and LED meters to simplify configuration. Digitoools can also be configured using a Windows application via USB.



### DIGITOOL® MX16

#### 8 INPUTS/8 OUTPUTS, EURO CONNECTORS

8 inputs/8 outputs, Euro connectors; Enhanced navigation; Front panel mute switches; Front panel input/output metering; Front panel USB port; Rear panel Ethernet port; 8 control voltage ports; 1 AES input, assignable to any outputs.

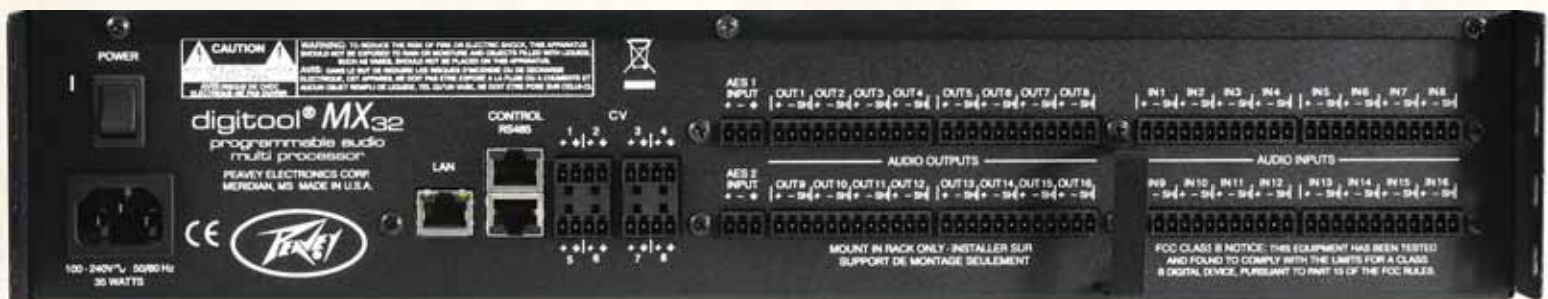
03601310



### DIGITOOL® LIVE

#### 8 INPUTS/8 OUTPUTS, BALANCED XLR

Designed for live sound applications; 8 inputs/8 outputs, balanced XLR; Enhanced navigation; Front panel mute switches; Front panel input/output metering; Front panel USB port; Rear panel Ethernet port; 1 AES input, assignable to any outputs. 03601280



### DIGITOOL® MX32

#### 16 INPUTS / 16 OUTPUTS, EURO CONNECTORS

16 inputs / 16 outputs, Euro connectors; Enhanced navigation; Front panel mute switches; Front panel input / output metering; Front panel USB port; Rear panel Ethernet port; 8 control voltage ports; 2 AES inputs, assignable to any outputs. 03601320

### DIGITOOL MX 16/LIVE/32

#### Dimensions (HxWxD):

3.5" x 19" x 13.125" / 89mm x 482.6mm x 333.38mm

#### Weight: 11lbs / 5kg

# EQUALIZERS

## PV<sup>®</sup> Series EQs

High-performance Graphic Equalizers.



### PV<sup>®</sup> 231 EQ

This dual 31-band, 2/3 octave graphic EQ allows selection between 6dB or 12dB cut or boost over frequencies ranging from 20Hz to 20kHz. Also includes a low-cut filter switch with status LED to remove stage rumble from open mics, and a convenient bypass switch with LED indicator.

Dimensions (HxWxD): 3.5" x 19" x 7.375" / 88.9mm x 483mm x 187mm

Weight: 7lbs / 3.175kg 03615360

### PV<sup>®</sup> 215 EQ

Providing an easy-to-use and affordable audio solution, the PV 215EQ is a dual 15-band 1/3 octave graphic featuring 6dB or 12dB cut or boost over frequencies ranging from 25Hz to 16kHz. With balanced XLR I/O, center-detent control sliders, output level LEDs and a low-cut filter switch with status LED, this EQ is ready for the stage or studio.

Dimensions (HxWxD): 1.75" x 19" x 8.5" / 88.9mm x 483mm x 215.9mm

Weight: 6lbs / 2.2721kg 03615350

## QF<sup>™</sup> Series

Professional Equalization With FLS<sup>®</sup> And A Full 18 dB Of Cut.



### FLS<sup>®</sup> Feedback Locating System

Feedback is a potential problem with any room and any sound system, but our exclusive Feedback Locating System helps you locate and stop the offending frequencies with great precision. At the onset of feedback, an LED will glow above the problematic frequency band. All you have to do is bring down that fader until the LED fades, or the feedback stops. By knowing exactly which frequency band to cut, you can avoid cutting useful audio that is not contributing to the feedback.

### QF<sup>™</sup> 215

Dual channels of 15-band graphic equalization provide articulate adjustment from 25Hz to 16kHz, with a generous 12dB boost and 18dB cut per EQ band. Also features FLS<sup>®</sup> (Feedback Locating System) and 18dB per octave 40Hz low-cut filter with status LED. XLR and 1/4" TRS I/O for balanced or unbalanced operation.

Dimensions (HxWxD): 3.5" x 19" x 7.375" / 88.9mm x 483mm x 187mm

Weight: 7.8lbs / 3.54kg 03615440

### QF<sup>™</sup> 131

A 31-band graphic EQ with 12dB boost and 18dB cut per band, the QF 131 provides precise control over any audio situation. This model has a 20Hz to 20kHz range with FLS<sup>®</sup> (Feedback Locating System), 18dB per octave 40Hz low-cut filter with status LED and constant Q filters.

Dimensions (HxWxD): 3.5" x 19" x 7.375" / 88.9mm x 483mm x 187mm

Weight: 7.8lbs / 3.54kg 03615420

## POWER DISTRIBUTION



### ISPD<sup>™</sup> Intelligent Sequential Power Distribution

120V 15 Amp power sequencer allows you to power on and off your sound system safely; Front panel meter displays AC line voltage; 8 outputs with maximum 15 Amp rating; Outputs turn on in sequence 1 to 8; Outputs turn off in sequence 8 to 1; Adjustable delay on each output; Ethernet connection for programming and control; RS485 port and switches to set unit ID allows up to 8 units to be linked; Front panel key switch and back panel input for an external control switch; Emergency front panel power down switch.

Dimensions (HxWxD): 1.75" x 19" x 8.25" / 88.9mm x 483mm x 209.55mm

Weight: 7.7lbs / 3.5kg 04000170



### PVR<sup>™</sup> 2 MEASUREMENT MICROPHONE

Reference-style flat frequency response ; Ideal for room analysis and special recording applications; Ideal for use with the VSX<sup>™</sup> processor; Rugged metal construction. Includes hardshell carrying case.

00592790



# CROSSOVERS

## PV® Series XOs



### PV® 35X0

Configurable for 3-way stereo or 4-way and 5-way mono operation, the PV 35X0 crossover features variable-state controls and 24dB/octave LR filters, with XLR inputs and outputs on each channel for balanced operation from 20Hz to 20kHz. In addition, there are mute capabilities for each output level control, a low-sum output jack to sum the low-frequency stereo content and phase inversion on each band pass output (except low sum). Weight: 5lbs / 2.268kg 03615400



### PV® 23X0

This 2-way stereo/3-way mono crossover includes fully adjustable crossover frequencies and levels with 24dB filters, mute switches, XLR input and output connectors and an internal power supply. Weight: 4.41lbs / 2kg 03615380

## LOUDSPEAKER MANAGEMENT SYSTEM

ANY COMBINATION OF INPUT-TO-OUTPUT IS CONFIGURABLE TO MATCH YOUR SYSTEM NEEDS.



### VSX® 26E & VSX® 48E

The VSX® 26E and VSX 48E are DSP-based loudspeaker management systems that boasts a 96kHz sample rate, floating point DSP processor for quiet, accurate filter response, fully adjustable crossover points, and any-input-to-any-output routing flexibility. These loudspeaker management systems have USB B and Ethernet ports for connection of the PC based GUI, which provides system control and memory storage.

Every input features Gain, Mute, HP and LP filters, 8 bands of PEQ, polarity and Delay (340 ms), while every output features 9 bands of PEQ, gain, compressor/limiter, polarity, Delay (680 ms), mute, and crossover/band-pass filters with Butterworth, Bessel or Linkwitz-Riley alignments from 1st order (6 dB/Oct) to 8th order (48 dB/Oct); EQ filter types include: PEQ, Low-Shelf, Hi-Shelf, Low-Pass, High-Pass, All-Pass1 and All-Pass2; Signal generator (sine, white noise, pink noise); Security lock.

Dimensions (HxWxD): 1.75" x 19" x 8" / 88.9mm x 483mm x 203mm

Weight: 5.2lbs / 2.4kg VSX 26E 2 in/6 out loudspeaker DSP management system **04000110**

VSX 48E 4 in/8 out loudspeaker DSP management system **04000130**



PC Graphical User Interface allows complete remote setup and operation via USB or Ethernet.

# VOCAL & INSTRUMENT MICROPHONES



RACHELE ROYALE  
CINEMATIC PICTURES GROUP  
PHOTOGRAPHER TJ SCOTT





FATHER BEAR

ALIXCIA

# VOCAL AND INSTRUMENT MICROPHONES



00593430 PV i2 XLR Gold  
00593490 PV i2 1/4" Gold  
00593440 PV i2 – XLR White

00593500 PV i2 1/4" White  
00496360 PV i2 – XLR Black  
00496570 PV i2 – 1/4" Black

## PV<sup>®</sup> i2

### Cardioid Dynamic Mic

The high-quality, high-value PV i2 microphone produces a clean, natural response with low handling noise through a cardioid unidirectional pickup pattern. Available in XLR-to-XLR or XLR-to-1/4" models in gold, black, and white.

**Extended high-frequency response; High-quality shock mount; Easy grip on/off switch; Rubberized windscreen impact ring; 6-meter cable, tapered mic clip with stand adapter, and carrying bag.**



03569810

## PV<sup>®</sup> i3

### Super Cardioid Dynamic Mic

A super-cardioid, dynamic microphone geared for vocal reproduction, the PV i3 features a specially designed rubber ring around a hardened mesh grille to guard against damage from impact. An extended high-frequency response covers a wide range frequency spectrum.

<b>Element Type</b>	Dynamic
<b>Pickup Pattern</b>	Super Cardioid
<b>Impedance</b>	200 ohm
<b>Frequency Response</b>	50Hz to 16kHz
<b>Sensitivity (open circuit voltage)</b>	-55dBV / Pa

## CM2<sup>™</sup>

The CM2<sup>™</sup> condenser microphone is a specially designed condenser microphone for instrument or vocal reproduction with a classic style and excellent frequency response.

## DM2<sup>™</sup>

Designed with a super-cardioid pickup pattern in a retro-looking chassis with a hardened mesh grille, this dynamic microphone is ideal for instruments or vocals.

<b>Element Type</b>	CM2 Electret Condenser	DM2 Dynamic
<b>Pickup Pattern</b>	Cardioid	Super Cardioid
<b>Impedance</b>	200 ohm	200 ohm
<b>Frequency Response</b>	20Hz to 20kHz	80Hz to 18kHz
<b>Sensitivity (open circuit voltage)</b>	-35dBV / Pa	-54dBV / Pa



CM2  
00567810



DM2  
00567820

## PEAVEY RIBBON MICROPHONES

Prized For Their Ability To Capture High-Frequency Detail

## RAB<sup>™</sup> 1/RAC<sup>™</sup> 1

If your flair for style is as great as your demand for incredible sound reproduction, the RAB 1 or RAC 1 microphones featuring large ribbon geometry are prime choices. Available in black or brushed-copper finish.

<b>Element Type</b>	Large Ribbon Geometry
<b>Pickup Pattern</b>	Figure 8
<b>Impedance</b>	200 ohm
<b>Frequency Response</b>	30Hz to 18kHz
<b>Sensitivity (open circuit voltage)</b>	-53dBV / Pa



RAB 1  
00567790



RAC 1  
00567800

## H-5<sup>™</sup>

The H-5's contoured casing and finger-placement grooves make amplifying your harmonica easy and comfortable. This omnidirectional harp mic features a center-detent volume control, detachable mini-XLR-to-1/4" cable and a handy on/off switch.

## H-5C<sup>™</sup>

The Cherry Bomb<sup>™</sup> is an expressive, responsive microphone for harp enthusiasts. Housed in a contoured casing with a bright-red finish and finger grooves, this is one microphone you won't want to put down. Features include a center-detent volume control, detachable mini-XLR-to-1/4" cable and on/off switch.

<b>Element Type</b>	Dynamic
<b>Pickup Pattern</b>	Omnidirectional
<b>Frequency Response</b>	20Hz to 5kHz
<b>Sensitivity (open circuit voltage)</b>	-51dBV / Pa



H-5 00597360



H-5C 00563080





03016190

## PVM™ 44

### Cardioid-Dynamic Mic

The PVM™ 44 cardioid-dynamic microphone allows relatively high gain before feedback, making the PVM 44 great for vocal reinforcement and instrument recording. The 44's solid construction holds up to the rigors of on-stage use, and its cardioid pattern helps eliminate bleed over and feedback.

**Wide frequency response; High clarity for vocals; Cardioid pickup pattern; Suited for vocal reinforcement and instrument recording; Coated microphone handle dampens unwanted handling noise; Gold-plated XLR microphone connector; Includes hardshell case and mic clip.**

Element Type	Neodymium magnet capsule, transformer output
Pickup Pattern	Cardioid
Impedance	250 ohm
Frequency Response	50Hz to 16kHz
Sensitivity (open circuit voltage)	-54dBV / Pa
Connector	XLR
Dimensions/Weight	54x180mm / 367g



03016200

## PVM™ 50

### Super Cardioid-Dynamic Mic

The PVM™ 50 super cardioid dynamic microphone features the same quality performance and smooth response of the PVM 44, but it offers an even tighter directional pickup pattern. The PVM 50 is ideal for live vocal reinforcement by helping to eliminate bleed over and feedback, and for instrument or amplifier recording by allowing the user to dial in on the "sweet spot."

**Super cardioid dynamic microphone; Neodymium magnet capsule, transformer output; Utilizes the latest technology to achieve optimum performance and smooth response; Frequency response: 50Hz – 16kHz; Mic clip and hardshell case included.**

Element Type	Neodymium magnet capsule, transformer output
Pickup Pattern	Cardioid
Impedance	250 ohm
Frequency Response	50Hz to 16kHz
Sensitivity (open circuit voltage)	-54dBV / Pa
Connector	XLR
Dimensions/Weight	54x180mm / 367g



00593450

## PVM 451R

Super-Cardioid Dynamic Mic  
Most Durable Drum Mic Available.

The PVM™ 451r is a Super-cardioid dynamic microphone for use with acoustic instruments and vocals. The slightly narrow on-axis pickup range affords the vocal user less bleed-over from instruments or vocals.

The null point of the PVM 451r is located typically 15dB less sensitive than the on-axis response. This helps reduce feedback from stage monitors and reduces background noise. The PVM 451r performs great on stage and in the recording studio.

**Neodymium magnet; Super-cardioid pickup pattern; Superior off-axis rejection; Smooth, accurate frequency response; Ultra-high sensitivity; Rubberized finish reduces handling noise; Drawstring bag, pop filter and stand adapter included.**

Element Type	Neodymium magnet capsule, transformer output
Pickup Pattern	Super-cardioid
Impedance	200 ohm
Frequency Response	50Hz to 18kHz
Sensitivity (open circuit voltage)	-53dBV / Pa
Connector	XLR



PV® i 100 – XLR 00577800  
PV® i 100 – 1/4" 00577810

## PV® i 100

### Cardioid Dynamic Vocal Mic

A dynamic cardioid microphone designed for multi-use applications, the PV i 100 is an economical microphone that includes a carrying pouch, mic clip, on/off switch with 1/4"-to-XLR, or XLR-to-XLR cable connections.

Element Type	Dynamic
Pickup Pattern	Dynamic cardioid
Impedance	500 ohm
Frequency Response	80Hz to 12kHz
Sensitivity (open circuit voltage)	-53dBV / Pa



PV® 7 – XLR 03013490  
PV® 7 – 1/4" 03013500

## PV® 7

### Cardioid-Dynamic Mic

PV® 7 is a very high value karaoke/vocal microphone. With a neodymium magnet diaphragm, high sensitivity, and a standard tone, it presents the individual character of the performer. Includes 5 meter mic cable with 1/4"-to-XLR, or XLR-to-XLR connections.

Element Type	Neodymium magnet capsule, transformer output
Impedance	500 ohm
Frequency Response	50Hz to 16kHz
Pickup Pattern	Cardioid
Connector	XLR



## PV® MSP1/MSP2 Mic Stand Packages

This complete microphone and accessory set is designed for musicians on the move, with a PV® i 100 or PV i 2 dynamic cardioid microphone and a fully adjustable, tripod-style boom stand that works equally well with vocals, acoustic guitars, amplifiers, drums and other instruments. Accessories include an XLR-to-XLR or XLR-to-1/4" cable, a mic stand clip and a protective nylon mic bag, all zippered in a durable gig bag.

**PV® MSP1 Mic Stand Pkg – XLR 00578000**

**PV® MSP1 Mic Stand Pkg – 1/4" 00579890**

**PV® MSP2 Mic Stand Pkg – XLR 03569770**

**PV® MSP2 Mic Stand Pkg – 1/4" 03569790**

The PV MSP2 package contains the same quality accessory components found in the PV MSP1 but with the PV i 2 microphone.



# STUDIO PRO® SERIES

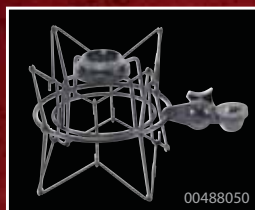
## ESSENTIAL TOOLS FOR RECORDING PROFESSIONALS.

### STUDIO PRO® M1

Specialized for studio recording, the Studio Pro M1 is a cardioid condenser microphone with a large capsule and gold-plated membrane. This model specializes in providing a flat, wide frequency response with ultra-low noise and transformer circuitry. Also features switchable low-frequency roll-off and 10dB pre-attenuation.

### STUDIO PRO® M2

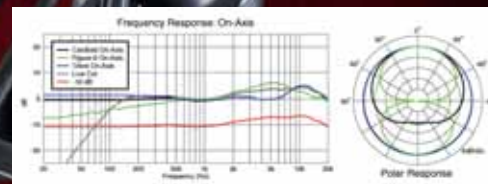
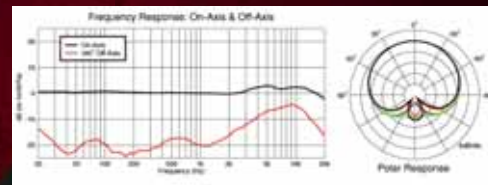
This pressure-gradient side-address, condenser microphone is switchable from cardioid, figure 8 or omni-directional patterns, with 140dB maximum SPL and 20dB front-to-back rejection. A superbly versatile, large-diaphragm microphone with switchable low-frequency roll-off and 10dB pre-attenuation.



00488050

### STUDIO PRO® SHOCK MOUNT

An excellent choice for all applications in recording studios, broadcasting, film and television, this high-quality shock mount attaches to the Studio Pro M1 and Studio Pro M2 professional studio microphones. The elastic band-supported mount isolates the microphone from unwanted noises and vibrations.

Studio Pro M2  
00488040Studio Pro M1  
00488030CM1  
00576730

### CM1™ CARDIOID CONDENSER MIC

The CM1™ is a hand held condenser microphone with a cardioid pickup pattern, medium-format element and dual-layer pop filter. Ideal as a main or support microphone in studio and live applications, this condenser has a frequency response of 50Hz to 16kHz and 136dB maximum SPL.

**Cardioid pickup pattern; Smooth, accurate frequency response; Medium format element; Dual-pop filter; Ideal for vocal or instrument pickup; Built-in shock mount; Includes 6-meter XLR to XLR microphone cable, mic clip, and stand adapter.**



# PVM™ DMS-5

## Complete Drum Miking Kit

The Peavey PVM™ DMS-5 drum microphones take the guesswork out of miking percussion instruments. From kick to snare to toms, we have every drum covered with three specialty microphones and the all-inclusive DMS-5 drum mic system.

The PVM DMS-5 drum microphone system includes one PVM 321 kick drum mic, one PVM 325 snare mic, three PVM 328 tom mics, four drum mount clips, four mic cables with 90° XLR connectors, one mic cable with straight XLR connectors and a carrying case.



*Perfect For Drummers And  
Sound Engineers, On stage Or In The Studio.*



### PVM™ 321

For Miking Kick Drums  
00493140



### PVM™ 325

For Miking Snare Drums  
00493150



### PVM™ 328

For Miking Tom Drums  
00493160

#### PVM™ DMS-5 System Includes:

- 1 – PVM 321 mic
- 1 – PVM 325 mic
- 3 – PVM 328 mics
- 4 – Drum mount clips
- 4 – Microphone cables with a 90° XLR connector
- 1 – Microphone cable with a straight XLR connector
- 1 – Carrying case



# SPECIALTY MICROPHONES

*With A Broad Range Of Microphones To Suit Any Application, Peavey Has Every Angle Covered.*

## PVM™ 480 Super-Cardioid Condenser Microphone

With superior sound quality for the most exacting reproduction of vocals and instruments, this super-cardioid condenser microphone is one of the most valuable and effective sound-reinforcement and recording tools available.

Designed with a flat frequency response of 40Hz to 20kHz, a wide dynamic range and -45dB sensitivity, the PVM™ 480 achieves optimum performance and accurate reproduction of almost any type of sound. Great for digital sampling, studio or location recording, instrumental pick-up, and even for hi-hat and overhead cymbals. Available in black or white finish.

## PSM™ 3 Boundary Microphone

The PSM 3 is a boundary microphone that makes tricky surface-miking jobs easy. Best used on a flat surface where an inconspicuous mic is required, this model is based around a back-electret, half-cardioid condenser with great response characteristics. Available in black or white finish.

## PVR™ 2 Omni Measuring Microphone

The PVR 2 is an omni-directional, back-electret condenser microphone for free-field measurement. With a highly reliable circuit and a 1/4" pre-polarized condenser capsule, it boasts high stability, low distortion and low noise in performance. This microphone's excellent flat frequency response makes it ideal for sonic analysis systems and recording.

## DMG-5V

The DMG-5V is ideal for board meetings, conferences and more. The variable pattern control on the base allows you to change the microphone pickup pattern to meet your needs. With its immunity to radio frequency interference, electronic devices in your meeting will not be a problem for the DMG-5V. The desk stand features a programmable switch to control the talk and mute feature.

## VCM™ 3 Miniature Choir Microphone

Equipped with a slim-profile cable for suspending long drops, this unobtrusive back-electret cardioid microphone is designed for suspension over choirs, instrumental ensembles and stage areas for sound-reinforcement and recording applications. Available in black or white finish.

## PM™ 18S Condenser Podium Microphone

The ultimate podium microphone! Offering a unique combination of features to suit any formal speaking application – including dual-flex tubing that allows for virtually infinite positioning scenarios – this specially designed back-electret condenser microphone offers a tailored, smooth frequency response with an excellent cardioid pickup pattern and high gain performance before feedback. Available in black or white finish.

VCM™ 3  
00577970  
Black  
00577960  
White

PVR™ 2  
00592790



PVM™ 480  
Black  
03014190



PVM™ 480  
White  
03014200



DMG-5V  
03017120



PM™ 18S  
00577990  
Black  
00579060  
White



PSM™ 3  
00577980  
Black  
00579040  
White

"Every sound engineer has a go-to mic. With its smooth response and articulate delivery, the Peavey PVM 480 is my first choice."

Kent Morris – Cornerstone Media



# WIRELESS MICROPHONES

## PRO COMM® SERIES 2.4GHZ DIGITAL WIRELESS SYSTEMS

AutoScan™ automatically finds a channel with no interference; CCS™ automatically sets channel selection on transmitter; Color LCD on receiver indicates functions; LCD on transmitter indicates channel and battery status; XLR and ¼" outputs; Durable, lightweight body pack; Available in guitar (body pack), vocal (handheld mic), hands-free vocal (headset mic), and presenter (lavalier mic).

### PRO COMM® Series 2.4GHz Digital Wireless Systems



# WIRELESS MICROPHONES



## PV<sup>®</sup> SERIES PROFESSIONAL WIRELESS MICROPHONE SYSTEMS

### *PV<sup>®</sup> 16 Channel UHF Single Or Dual-Receiver Diversity Wireless Microphone Systems*

16-Channel UHF diversity or Dual-Receiver diversity wireless mic system; Available in handheld, lavalier, headset and guitar models; Easy-to-use frequency scan locks transmitter and receiver into the strongest available open frequency; Multiple PV 16 wireless systems can be operated simultaneously; Operating range up to 300 feet; Balanced and unbalanced outputs; Handheld transmitter has on/off and mute functions; Single receiver rack mount kit included; Optional dual receiver rack mount kits are available; Transmitter requires two AA batteries for operation; Battery life approximately 8 hours.

**03011510 PV<sup>®</sup> 16 Channel Handheld Wireless System**

**03011530 PV<sup>®</sup> 16 Channel Lavalier Wireless System**

**03011520 PV<sup>®</sup> 16 Channel Headset Wireless System**

**03016070 PV<sup>®</sup> 16 Channel Guitar Wireless System**

**03011540 PV<sup>®</sup> 16 Channel Dual HH / HH Wireless System**

**03017180 PV<sup>®</sup> 16 Channel Dual HH / BHS Wireless System**

**03017220 PV<sup>®</sup> 16 Channel Dual BL / BHS Wireless System**

**03017250 PV<sup>®</sup> 16 Channel Dual BL / BL Wireless System**

**03017170 PV<sup>®</sup> 16 Channel Dual HH / BL Wireless System**

**03017190 PV<sup>®</sup> 16 Channel Dual HH / GTR Wireless System**

**03017210 PV<sup>®</sup> 16 Channel Dual BL / GTR Wireless System**

**03017240 PV<sup>®</sup> 16 Channel Dual GTR / GTR Wireless System**



## PV® 1 SINGLE-CHANNEL DIVERSITY WIRELESS MICROPHONE SYSTEM

### UHF OR VHF

Single-channel diversity wireless system; Available in Handheld, Headset, Lavalier and Guitar Systems; Half-rack receiver with retractable front panel dual antennas; RF and AF 4-LED displays for monitoring incoming signal strength and audio level; Balanced XLR and unbalanced 1/4" jack outputs; Mute (squellch control) adjustment control; Transmitters equipped with low battery LED indicators; Optional single or dual receiver rack mounting kits available.

03010140 PV-1 U1 Hand Held 906.000MHz	03010050 PV-1 V1 Hand Held 203.400MHz
03010150 PV-1 U1 Hand Held 911.700MHz	03010060 PV-1 V1 Hand Held 198.950MHz
03010160 PV-1 U1 Hand Held 923.700MHz	03010070 PV-1 V1 Hand Held 214.500MHz
03010080 PV-1 U1 Head Set 906.000MHz	03009990 PV-1 V1 Head Set 203.400MHz
03010090 PV-1 U1 Head Set 911.700MHz	03010000 PV-1 V1 Head Set 198.950MHz
03010100 PV-1 U1 Head Set 923.700MHz	03010010 PV-1 V1 Head Set 214.500MHz
03010110 PV-1 U1 Lavalier 906.000MHz	03010020 PV-1 V1 Lavalier 203.400MHz
03010120 PV-1 U1 Lavalier 911.700MHz	03010030 PV-1 V1 Lavalier 198.950MHz
03010130 PV-1 U1 Lavalier 923.700MHz	03010040 PV-1 V1 Lavalier 214.500MHz
03010190 PV-1 U1 Guitar 914.500MHz	03010170 PV-1 V1 Guitar 209.150MHz
03010200 PV-1 U1 Guitar 921.300MHz	03010180 PV-1 V1 Guitar 178.150MHz

PV-1 GUITAR



PV-1 HEADSET



PV-1 LAVALIER



PV-1 HANDHELD



03010710 In Ear Monitor Receiver

## IN EAR MONITOR

### Includes Transmitter, Receiver & Ear Buds

100-channel tunable UHF frequency options for interference-free reception; Dynamic compander provides crystal-clear sound as well as enhanced AF frequency range; Balanced XLR and 1/4" jack inputs; 1/4" balanced outputs; Automatic frequency-scan feature searches for available open frequencies; User-friendly menu operation with more control options shown in LCD display; Headphone monitoring output on the transmitter; Highly efficient power consumption circuitry ensures long operating hours from two AA batteries; System includes transmitter, receiver and ear buds.



03010690 In Ear Monitor System

## ASSISTED LISTENING SYSTEM

### Includes Transmitter, Four Receivers, Four Ear Buds And AC/DC Power Supply

Available in three frequencies, 72-76 MHz transmitter range; Input for line level audio; Audio input gain control; Automatic level control; LED power on and audio modulation indicators; Additional receivers are available to expand the systems to a limitless number of users; System includes transmitter, four receivers, four ear buds, and AC / DC power supply.

03010620 ALS 72.1MHz
03010680 ALS 72.9MHz
03010650 ALS 75.9MHz

03010640 ALS 72.1MHz RECEIVER
03010590 ALS 72.9MHz RECEIVER
03010670 ALS 75.9MHz RECEIVER

Assisted Listening System



# ReValver®

## Revolutionary Amp Modeling Software

Standalone, AAX, AU & VST Plugin



Peavey ReValver® 4 models guitar gear at the component level, resulting in unmatched realism, dynamics and tone - making ReValver the most advanced amp modeling software in the industry. ReValver's Cabinet Modeling takes convolution cabinet modeling to another level while ACT™ (Audio Cloning Technology) allows incredible instrument modeling and tone matching. The ACT Combo Amp Cloner and ACT Rack modules allow the software to clone the sound of any amplifier in the world, making ReValver virtually unlimited. Expand ReValver even further by hosting 3rd party VST/AU plugins within the software. ReValver is available as a standalone program or as an AAX, VST or AU plug in

# UNLIMITED





### COMPONENT LEVEL MODELING

How does ReValver simulate the sound of tube amplifiers and effects with such unrivaled accuracy? Component level modeling. In ReValver, every resistor, capacitor and tube is modeled in stunning detail.

### ADVANCED CABINET MODELING

ReValver takes cabinet modeling to a whole new level of accuracy and realism by giving the user independent control of speaker configuration, microphone, and mic placement, allowing for almost endless tone shaping options.



### 3RD PARTY PLUGIN HOSTING

Expand ReValver with VST and AU plugins of your own. Add your favorite effects and stompbox plugins, or even use 3rd party amp sim modules with ReValver's advanced cabinet modeling.



### GIG MODE

GIG mode allows the user to load 8 presets into memory and seamlessly switch between them using a MIDI controller, making ReValver a powerhouse live rig.



### AMP STORE

Download ReValver 4 for free and then browse the Amp Store for a wealth of additional amp/stomp/effects modules, ACT instrument models and ACT Combo Amp Cloner presets. Demo any module first and just buy the content you want.



### AUDIO CLONING TECHNOLOGY™ (ACT)



ACT shapes your guitar tone like never before. At the input, ACT becomes an instrument modeler by altering the incoming guitar signal to mimic the sound and characteristics of other instruments, such as acoustics, folk instruments, and even other electric guitar and pickup combinations.

### TONE CLONING



Imagine being able to clone the sound of any guitar amplifier in the world. Simply find the tones you want and own them forever. ReValver is putting the power of its ACT technology into your hands with the introduction of the ACT Combo Amp Cloner module. ReValver just became unlimited.

With ReValver 4 also comes the introduction of the ReValver Amp Store, allowing users to purchase new amps, stompboxes, effects, and ACT content through in-app purchases. Users can begin with the free version of ReValver 4, and then simply purchase the additional content they desire.

ReValver 4 supports the powerful new AAX plug-in format for Pro Tools® alongside AU and VST formats. As always, the software can also be used as a stand-alone virtual amplifier, so whether working in a commercial studio, at home or on the live stage, ReValver 4 offers incredibly real sounding and feeling guitar tones with an incredible amount of versatility.



PEAVEY.COM PRINTED IN THE USA

